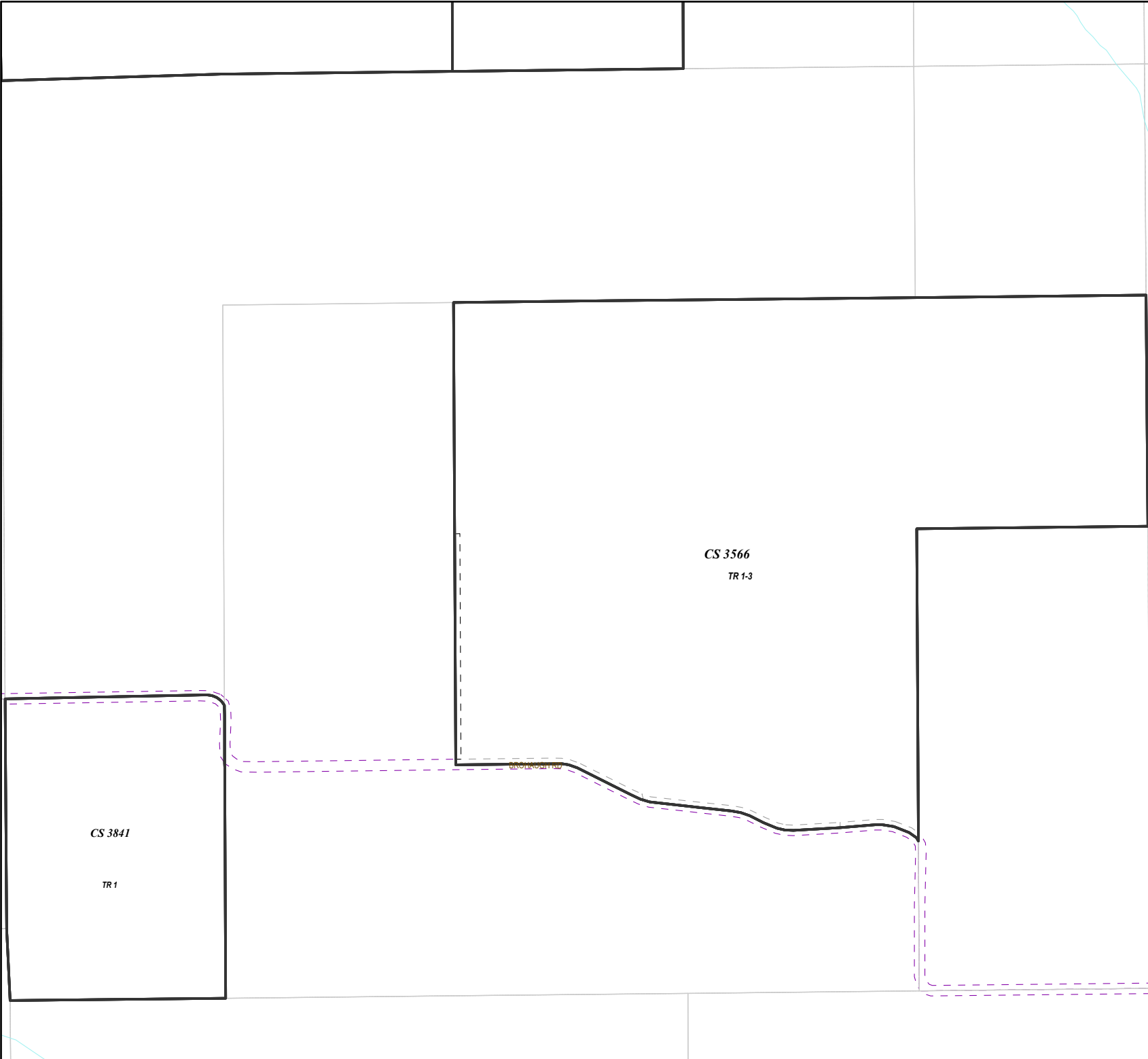
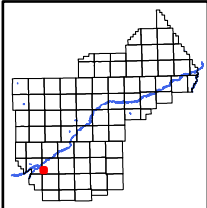


This document is intended for informational purposes only and is not guaranteed to be accurate nor current.



**Legend**

- Easement Type
- Water feature easements
  - Dry hydrant easements
  - Closed/vacated or abandoned
  - Pedestrian (bike, walking, park, sidewalk)
  - Road easements (public)
  - Road easements (private)
  - Multi-Use easements
  - All other easements



6	5	4	3	2	1
7	8	9	10	11	12
18	17	16	15	14	13
19	20	21	22	23	24
<b>30</b>	29	28	27	26	25
31	32	33	34	35	36



**YELLOWSTONE COUNTY GIS**  
BILLINGS, MONTANA

1 inch = 745 feet  
1 inch = 227 meters  
**SEC 30, T2SR25E**  
Date: 6/14/2023