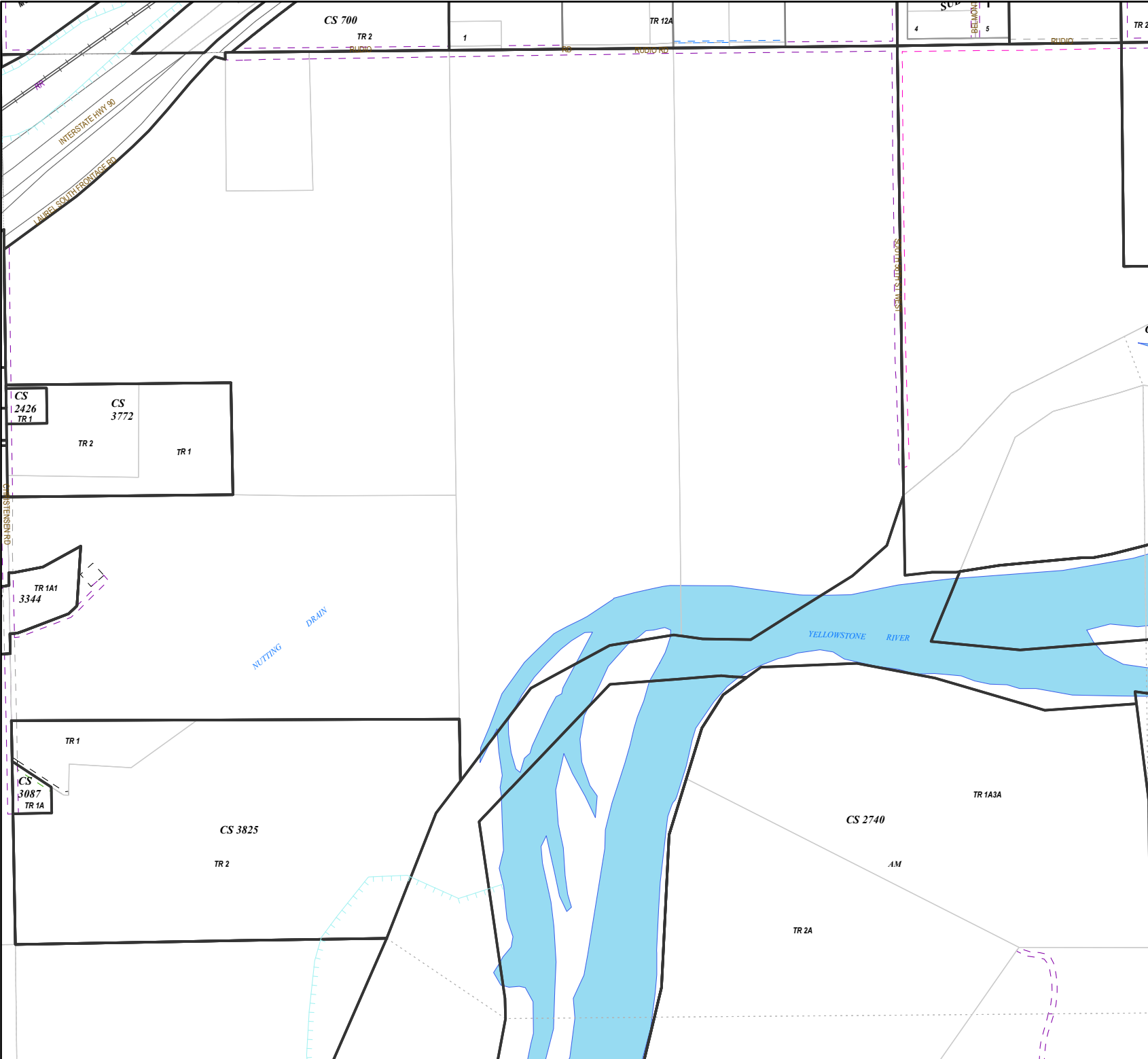


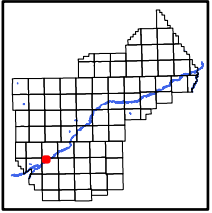
This document is intended for informational purposes only and is not guaranteed to be accurate nor current.



**Legend**

Easement Type

- Water feature easements
- Dry hydrant easements
- Closed/vacated or abandoned
- Pedestrian (bike, walking, park, sidewalk)
- Road easements (public)
- Road easements (private)
- Multi-Use easements
- All other easements



N

6	5	4	3	2	1
7	8	9	10	11	12
18	17	16	15	14	13
19	20	21	22	23	24
30	29	28	27	26	25
31	32	33	34	35	36

**YELLOWSTONE COUNTY GIS**  
BILLINGS, MONTANA

1 inch = 769 feet  
1 inch = 234 meters  
**SEC 05, T2SR25E**  
Date: 3/6/2024