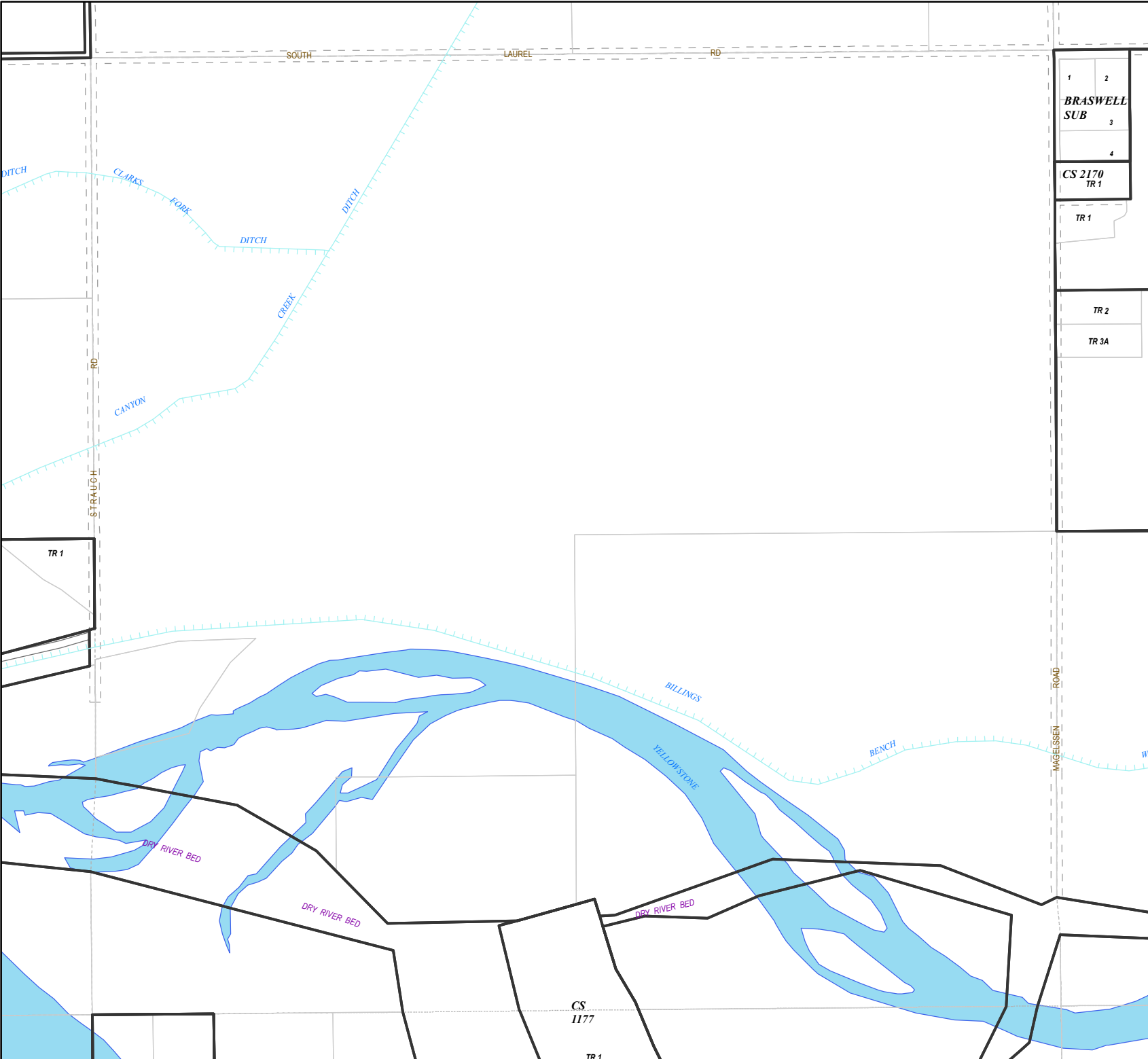


This document is intended for informational purposes only and is not guaranteed to be accurate nor current.



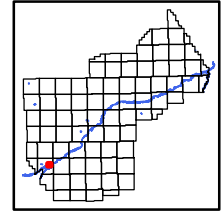
1	2
BRASWELL SUB	
3	
4	
CS 2170 TR 1	

TR 1

TR 2

TR 3A

TR 1



6	5	4	3	2	1	6
7	8	9	10	11	12	7
18	17	16	15	14	13	
19	20	21	22	23	24	
30	28	27	26	25		
	33	34	35	36		



YELLOWSTONE COUNTY GIS
BILLINGS, MONTANA

1 inch = 716 feet
1 inch = 218 meters

SEC 14, T2SR24E
Date: 2/11/2019