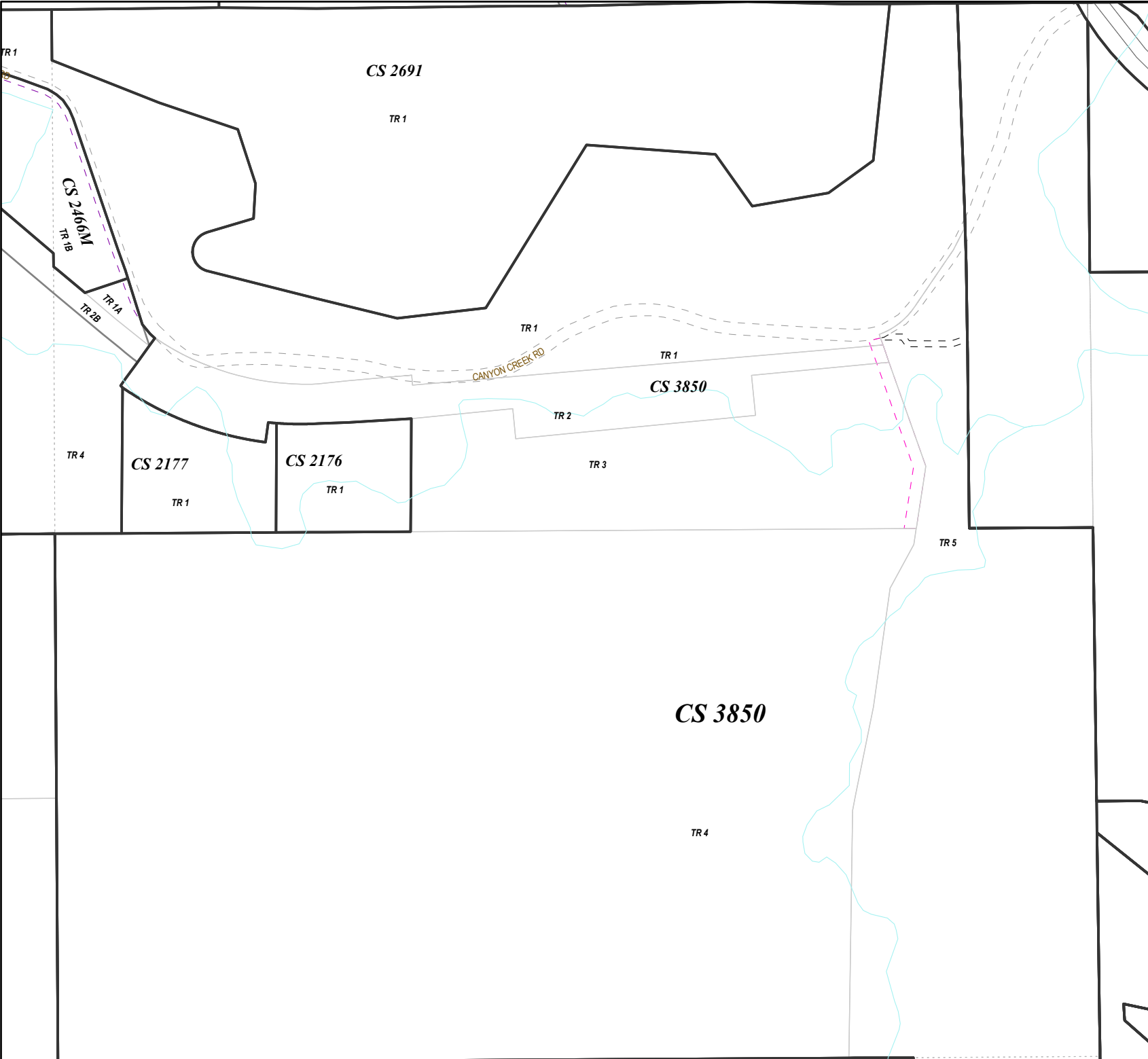
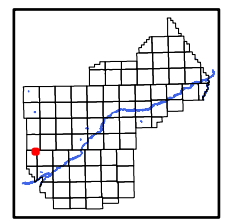


This document is intended for informational purposes only and is not guaranteed to be accurate nor current.



Legend

- Easement Type
- Water feature easements
 - Dry hydrant easements
 - Closed/vacated or abandoned
 - Pedestrian (bike, walking, park, sidewalk)
 - Road easements (public)
 - Road easements (private)
 - Multi-Use easements
 - All other easements



4	3	2	1	6
9	10	11	12	7
16	15	14	13	18
21	22	23	24	19
28	27	26	25	30
33	34	35	36	31



YELLOWSTONE COUNTY GIS
BILLINGS, MONTANA

1 inch = 651 feet
1 inch = 198 meters
SEC 01, T1SR23E
Date: 9/28/2023