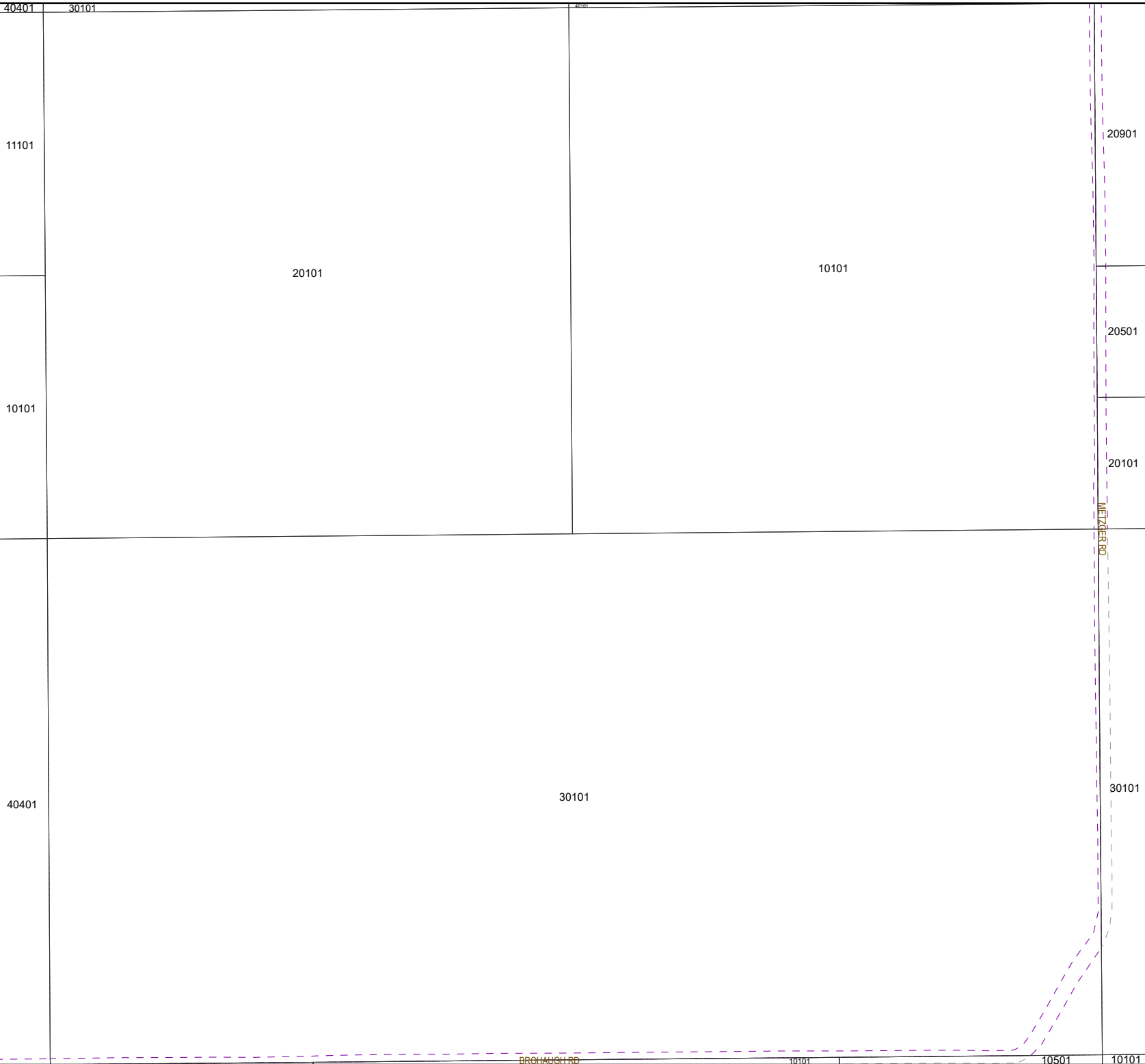


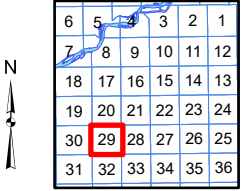
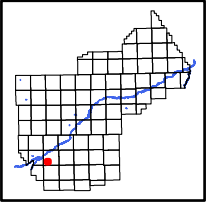
This document is intended for informational purposes only and is not guaranteed to be accurate nor current.



Legend

Easement Type

- Water feature easements
- Dry hydrant easements
- Closed/vacated or abandoned
- Pedestrian (bike, walking, park, sidewalk)
- Road easements (public)
- Road easements (private)
- Multi-Use easements
- All other easements



YELLOWSTONE COUNTY GIS
BILLINGS, MONTANA

1 inch = 659 feet
1 inch = 201 meters
SEC 29, T2SR25E
Date: 3/16/2023