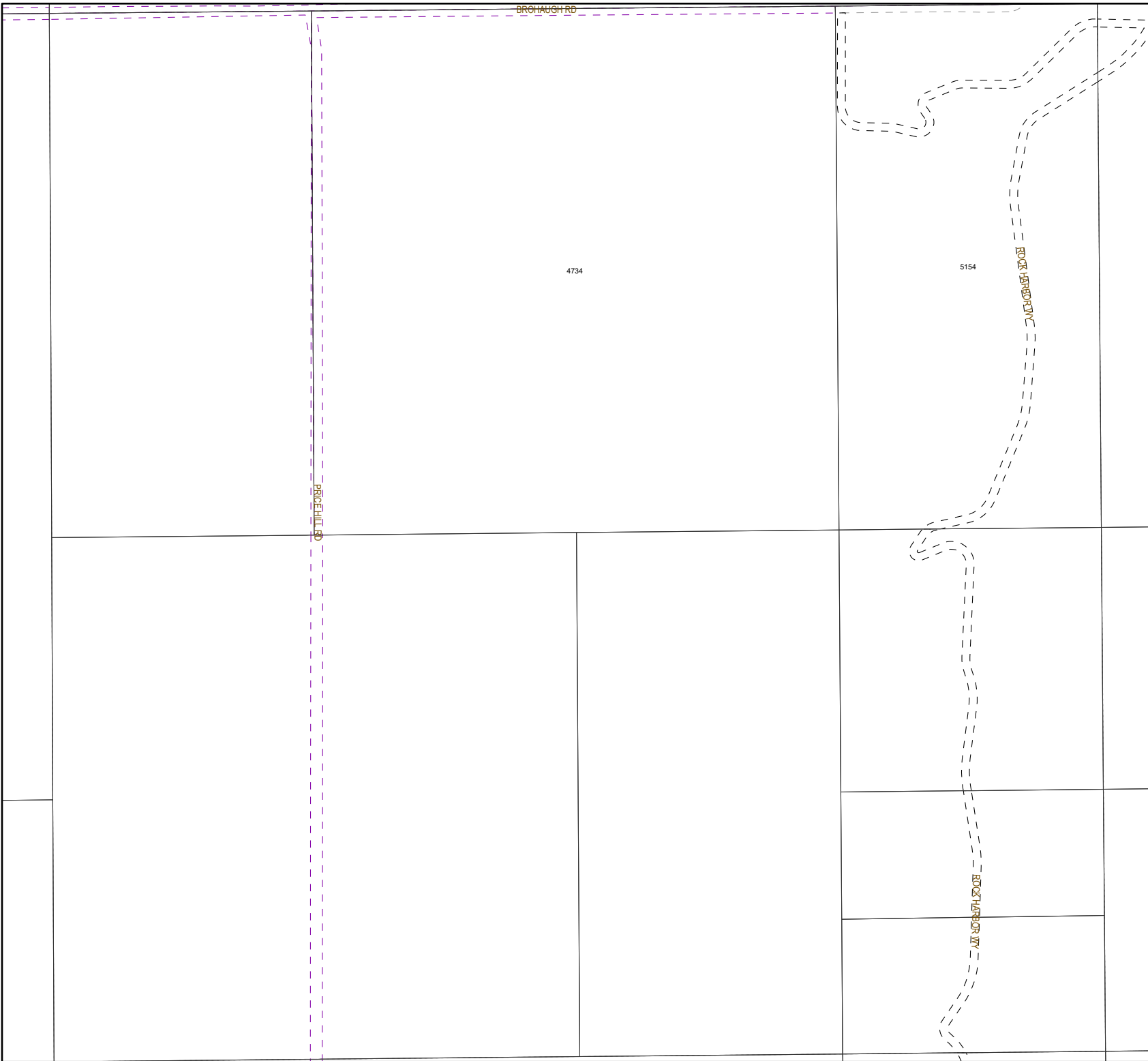





This document is intended for informational purposes only and is not guaranteed to be accurate nor current.

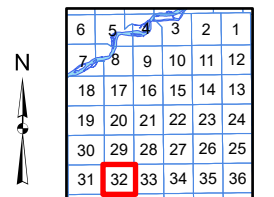
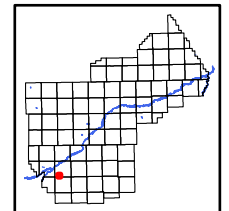


### Legend

#### Easement

##### Type

-  Water feature easements
-  Dry hydrant easements
-  Closed/vacated or abandoned
-  Pedestrian (bike, walking, park, sidewalk)
-  Road easements (public)
-  Road easements (private)
-  Multi-Use easements
-  All other easements



**YELLOWSTONE COUNTY GIS**  
BILLINGS, MONTANA

1 inch = 659 feet  
1 inch = 201 meters  
**SEC 32, T2SR25E**  
Date: 11/9/2023