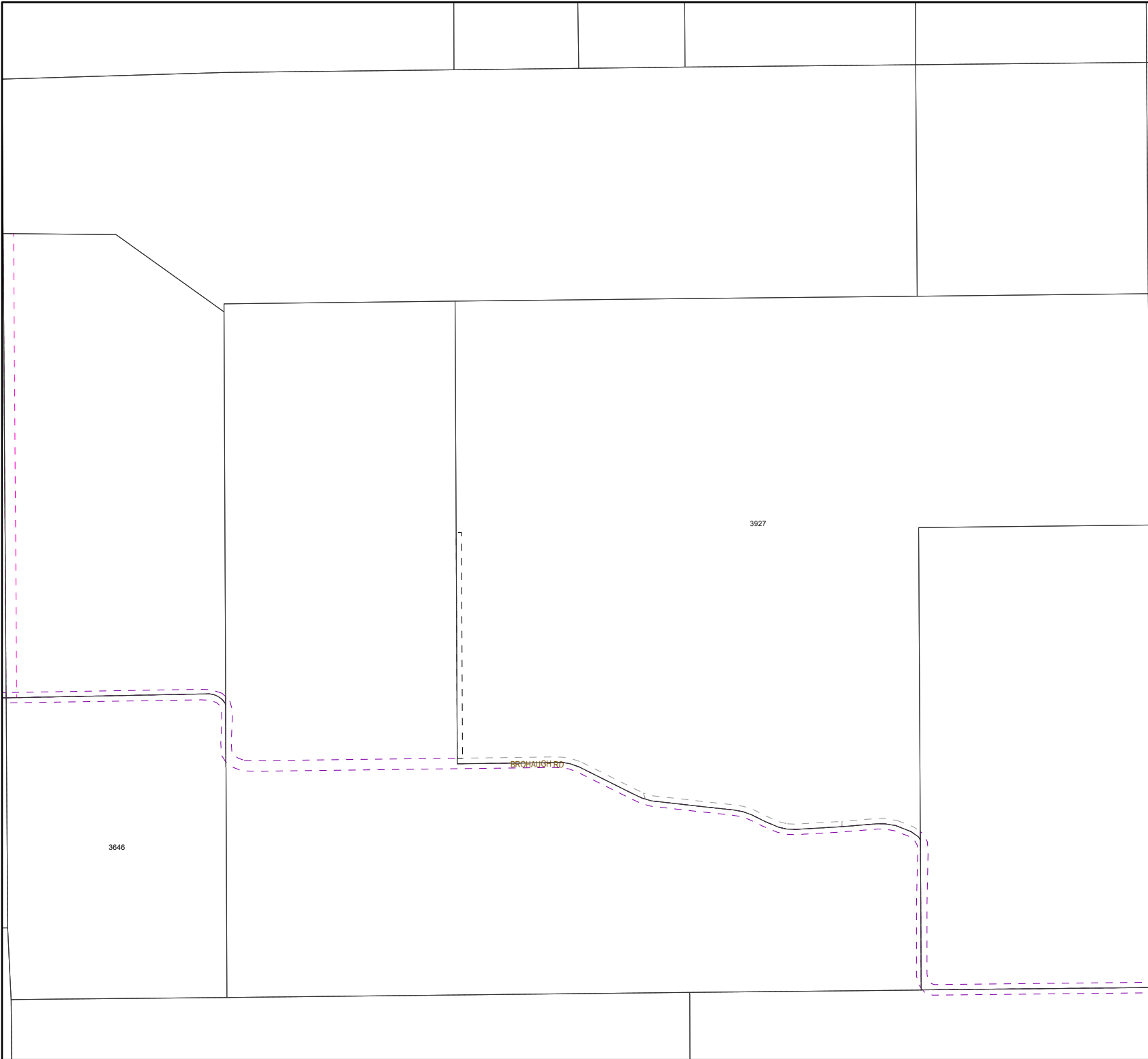










This document is intended for informational purposes only and is not guaranteed to be accurate nor current.

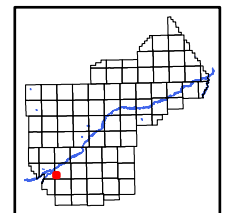


### Legend

#### Easement

##### Type

-  Water feature easements
-  Dry hydrant easements
-  Closed/vacated or abandoned
-  Pedestrian (bike, walking, park, sidewalk)
-  Road easements (public)
-  Road easements (private)
-  Multi-Use easements
-  All other easements



6	5	4	3	2	1
7	8	9	10	11	12
18	17	16	15	14	13
19	20	21	22	23	24
30	29	28	27	26	25
31	32	33	34	35	36

**YELLOWSTONE COUNTY GIS**  
BILLINGS, MONTANA

1 inch = 747 feet  
1 inch = 228 meters  
**SEC 30, T2SR25E**  
Date: 10/10/2024