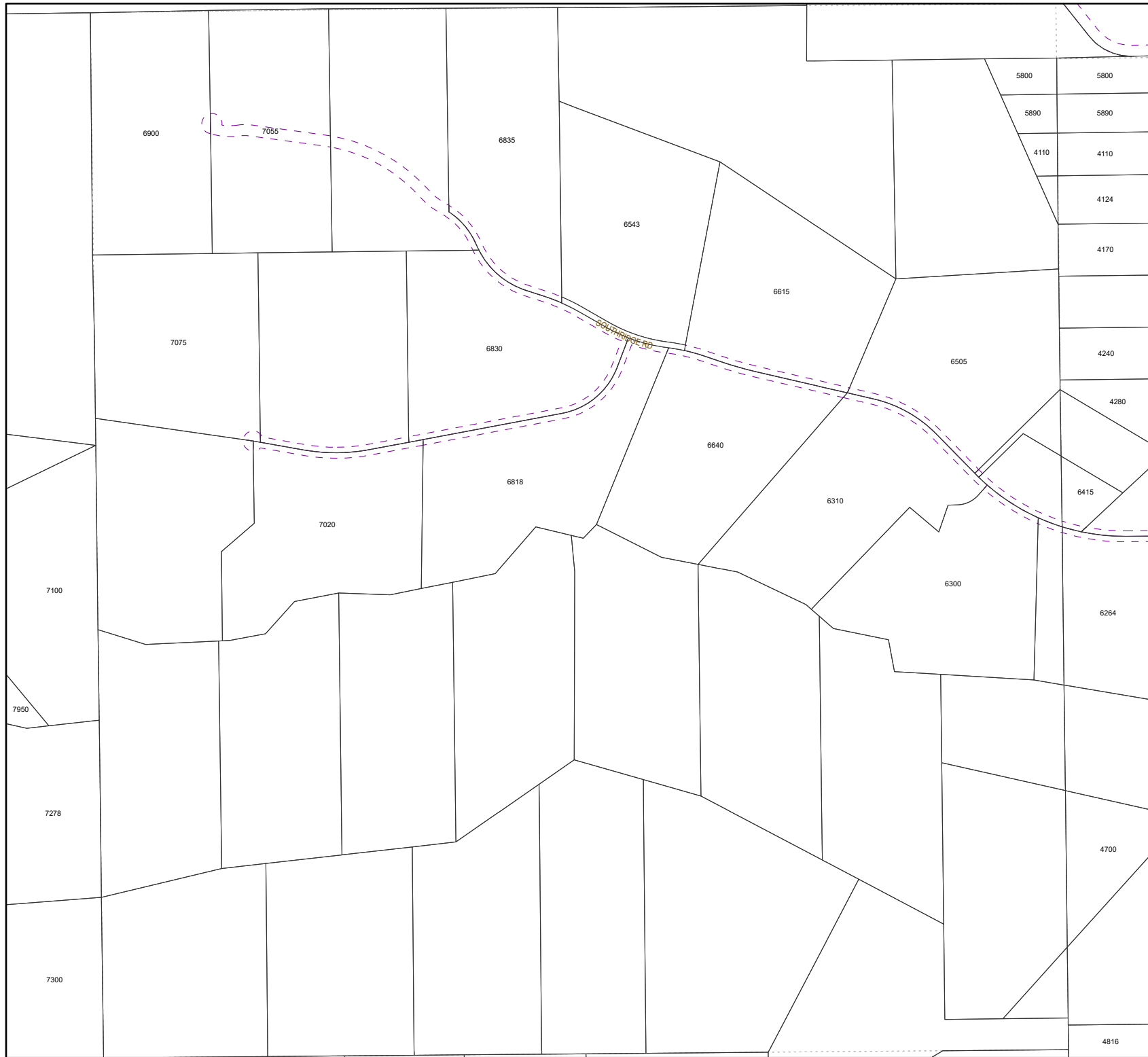
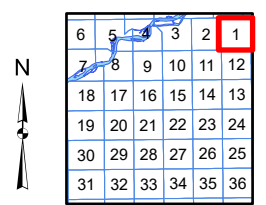
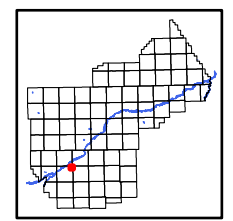


This document is intended for informational purposes only and is not guaranteed to be accurate nor current.



### Legend

- Easement Type
- Water feature easements
  - Dry hydrant easements
  - Closed/vacated or abandoned
  - Pedestrian (bike, walking, park, sidewalk)
  - Road easements (public)
  - Road easements (private)
  - Multi-Use easements
  - All other easements



**YELLOWSTONE COUNTY GIS**  
BILLINGS, MONTANA

1 inch = 714 feet  
1 inch = 218 meters  
**SEC 01, T2SR25E**  
Date: 8/2/2023