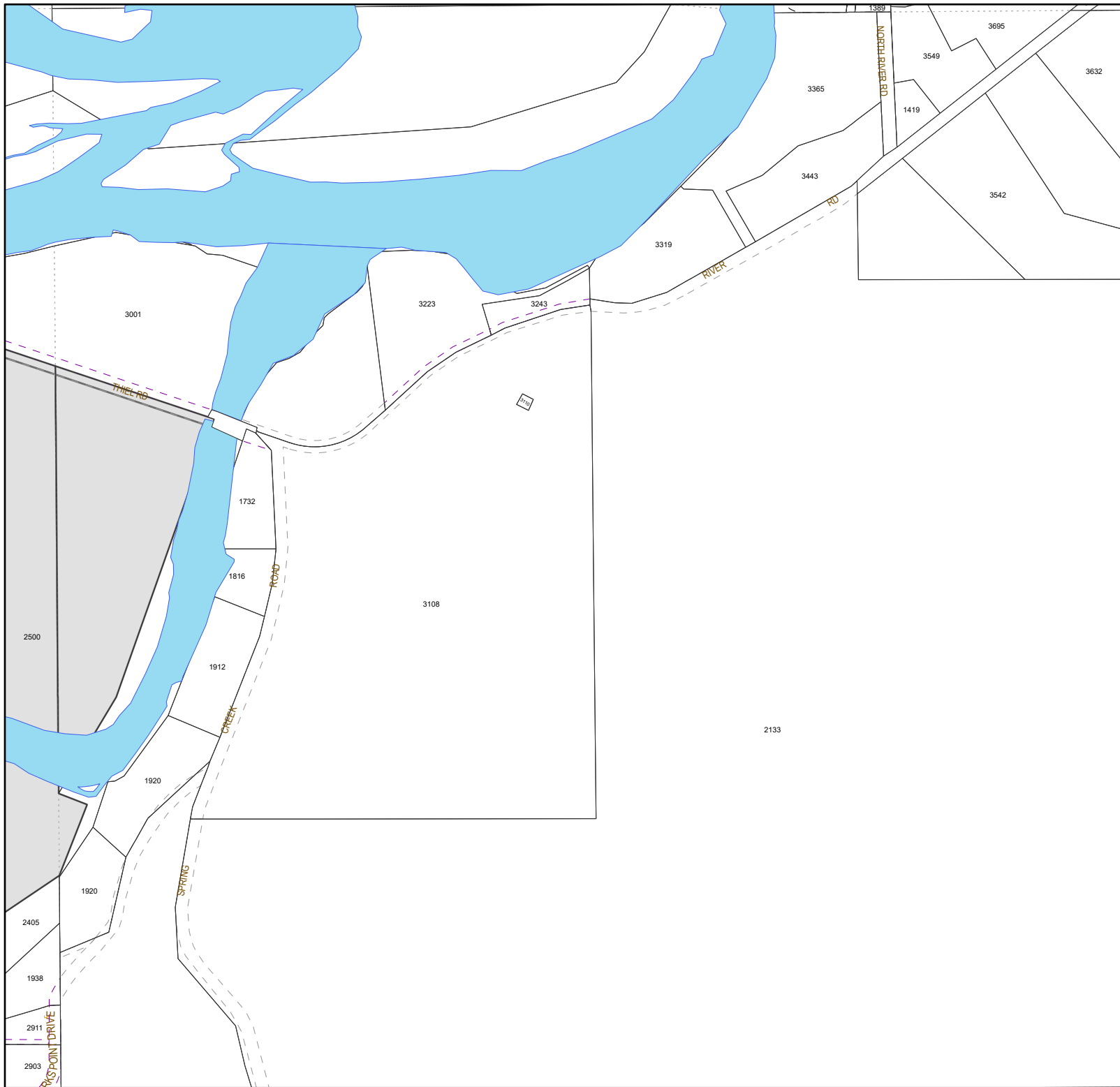
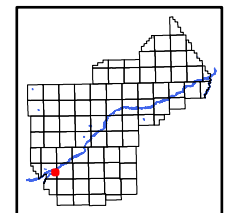


This document is intended for informational purposes only and is not guaranteed to be accurate nor current.



### Legend

- Easement Type
- Water feature easements
  - Dry hydrant easements
  - Closed/vacated or abandoned
  - Pedestrian (bike, walking, park, sidewalk)
  - Road easements (public)
  - Road easements (private)
  - Multi-Use easements
  - All other easements



6	5	4	3	2	1
7	8	9	10	11	12
18	17	16	15	14	13
19	20	21	22	23	24
30	28	27	26	25	
	33	34	35	36	

**YELLOWSTONE COUNTY GIS**  
BILLINGS, MONTANA

1 inch = 658 feet  
1 inch = 201 meters  
**SEC 24, T2SR24E**  
Date: 12/12/2024