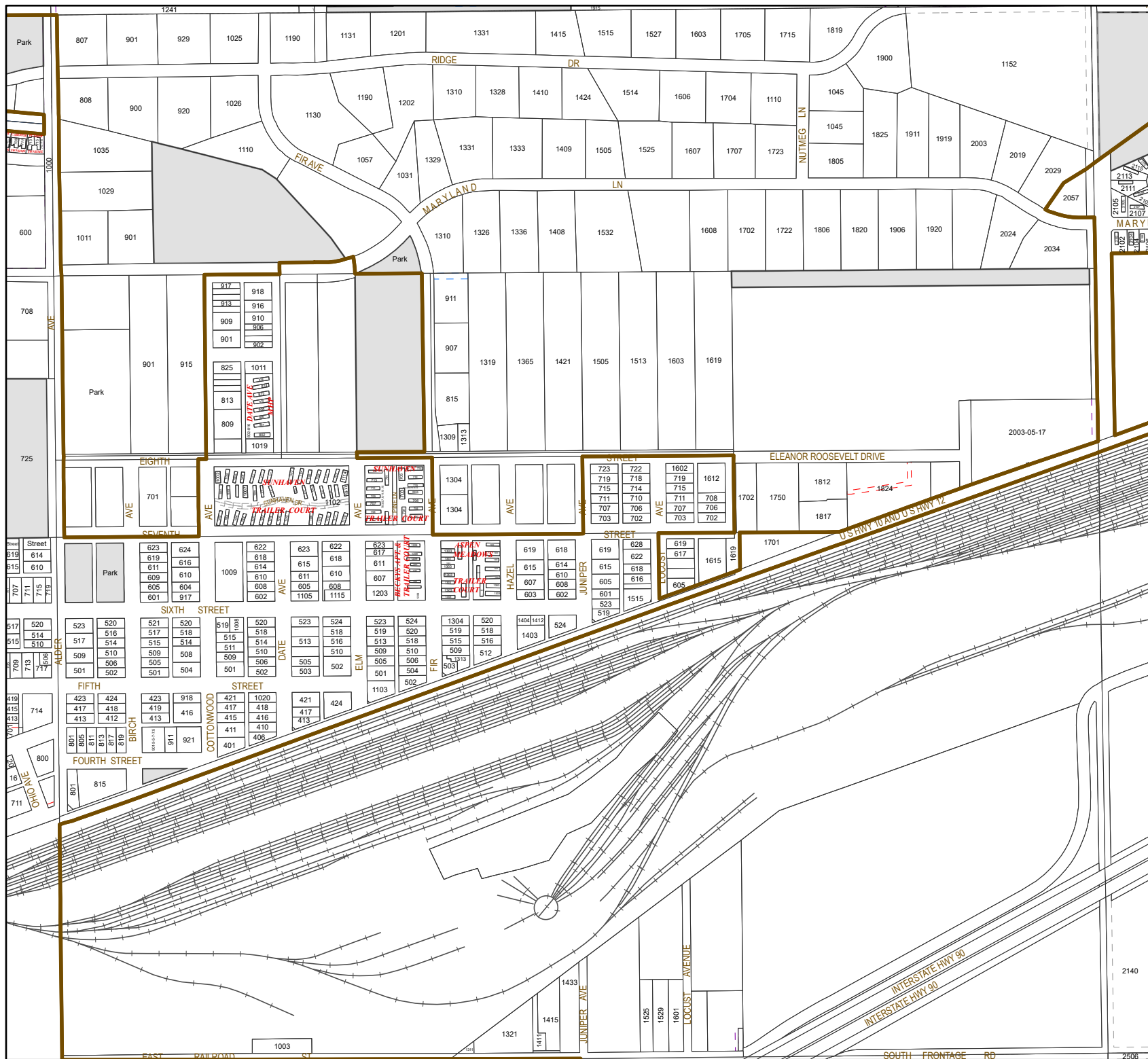


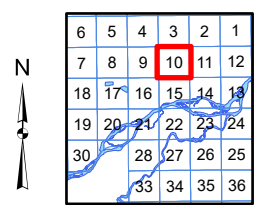
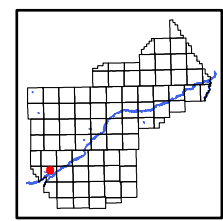
This document is intended for informational purposes only and is not guaranteed to be accurate nor current.



### Legend

Easement Type

- Water feature easements
- Dry hydrant easements
- Closed/vacated or abandoned
- Pedestrian (bike, walking, park, sidewalk)
- Road easements (public)
- Road easements (private)
- Multi-Use easements
- All other easements



**YELLOWSTONE COUNTY GIS**  
BILLINGS, MONTANA

1 inch = 658 feet  
1 inch = 201 meters  
**SEC 10, T2SR24E**  
Date: 10/10/2024