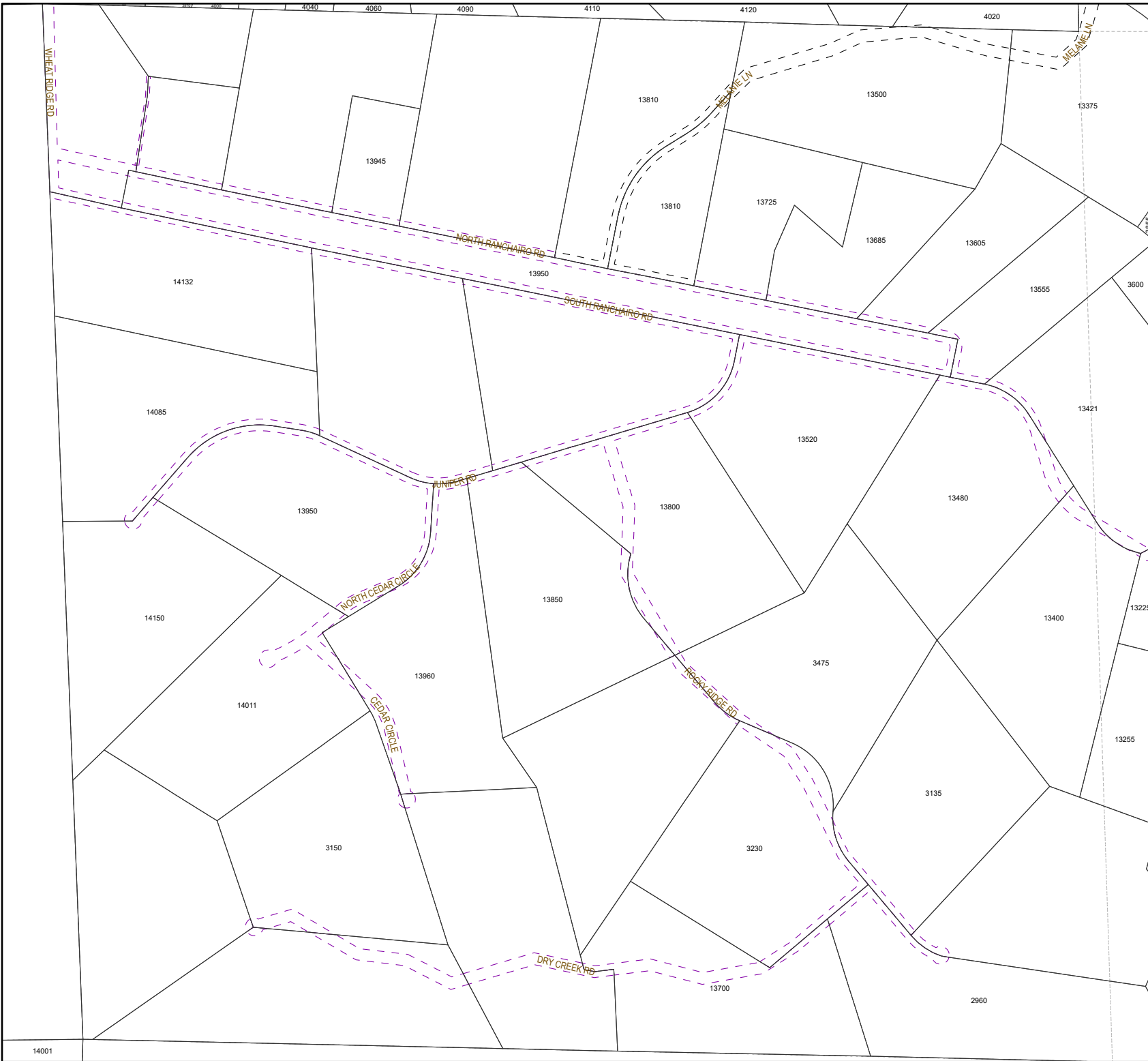


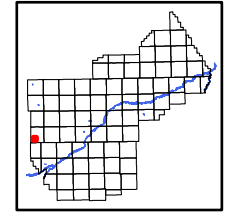
This document is intended for informational purposes only and is not guaranteed to be accurate nor current.



Legend

Easement Type

- Water feature easements
- Dry hydrant easements
- Closed/vacated or abandoned
- Pedestrian (bike, walking, park, sidewalk)
- Road easements (public)
- Road easements (private)
- Multi-Use easements
- All other easements



5	4	3	2	1	6
8	9	10	11	12	7
17	16	15	14	13	
20	21	22	23	24	
29	28	27	26	25	
32	33	34	35	36	



YELLOWSTONE COUNTY GIS
BILLINGS, MONTANA

1 inch = 675 feet
1 inch = 206 meters
SEC 28, T1NR23E
Date: 8/2/2023