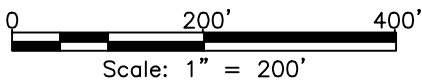
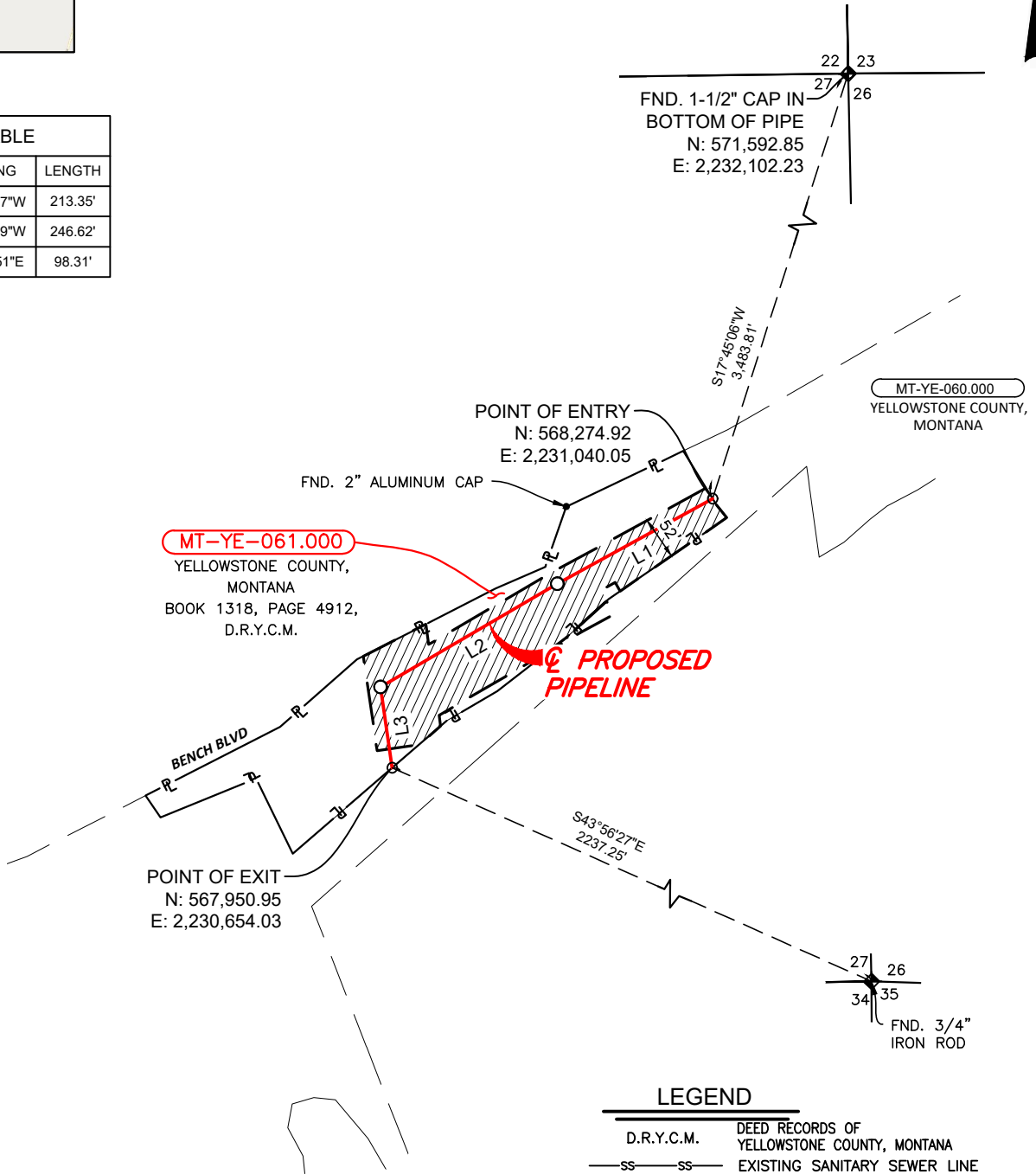




VICINITY  
N.T.S.

**EXHIBIT A**  
**YELLOWSTONE COUNTY, MONTANA**  
 SECTION 27, TOWNSHIP 1-N, RANGE 26-E, PRINCIPAL  
 MONTANA MERIDIAN  
**TRACT NO. MT-YE-061.000**  
 PIPELINE IS 558.28 FEET OR 33.83 RODS  
 CONSTRUCTION WORKSPACE IS 0.83 ACRES

LINE TABLE		
NUMBER	BEARING	LENGTH
L1	S61°20'37"W	213.35'
L2	S59°42'49"W	246.62'
L3	S08°16'51"E	98.31'



**NOTES**

- ALL BEARINGS AND COORDINATES ARE BASED ON THE MONTANA STATE PLANE COORDINATE SYSTEM, NORTH AMERICAN DATUM OF 1983 (2011) EPOCH 2010, GEOID18 (CONUS), U.S. SURVEY FEET BASED ON GPS OBSERVATIONS MADE BY AUDUBON FIELD SOLUTIONS, DISTANCES ARE GRID.
- OWNERSHIP AND TRACT INFORMATION SHOWN HEREON IS BASED ON ABSTRACT SERVICES PROVIDED BY CONTRACT LAND STAFF, LLC. THIS EXHIBIT WAS PREPARED WITHOUT A COMMITMENT FOR TITLE INSURANCE. THEREFORE, EASEMENTS OF RECORD MAY EXIST AND ARE NOT SHOWN HEREON.
- THIS SURVEY IS NOT INTENDED TO REPRESENT A BOUNDARY SURVEY.
- EASEMENT LINES ARE INTENDED TO BE CLIPPED OR PROLONGED TO THE DEED LINES.

**LEGEND**

- D.R.Y.C.M. DEED RECORDS OF YELLOWSTONE COUNTY, MONTANA
- SS— SS— EXISTING SANITARY SEWER LINE
- V—V— TOP OF BANK
- X—X— FENCE LINE
- R—R— PROPOSED PIPELINE CENTERLINE
- P—P— PROPERTY LINE
- FOUND PROPERTY CORNER AS NOTED
- ◆ FOUND SECTION CORNER AS NOTED
- ▨ CONSTRUCTION WORKSPACE
- ▩ ADDITIONAL CONSTRUCTION WORKSPACE



**PHILLIPS 66 CARRIER LLC**

**GL-09 PIPELINE PROJECT**

EXHIBIT OF A PROPOSED PIPELINE ACROSS  
YELLOWSTONE COUNTY, MONTANA

YELLOWSTONE COUNTY		MONTANA	
DRAWN BY	DMT	CHK'D BY	AFS
SCALE	1" = 200'	APP'VD BY	AFS
DATE	09/20/24	REVISION	0



REV	DESCRIPTION	BY	DATE	CHK'D	APPR.
0	ISSUED	DMT	09/25/24	AFS	AFS

PROJECT NO. 026008-0010

MT-YE-061.000  
SHEET 1 OF 1