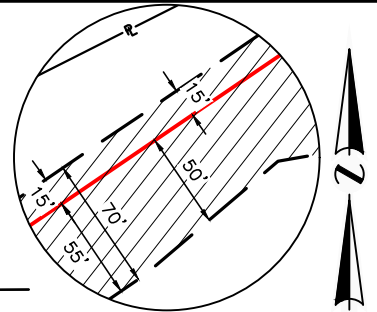
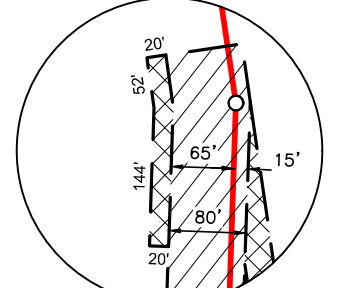


VICINITY
N.T.S.

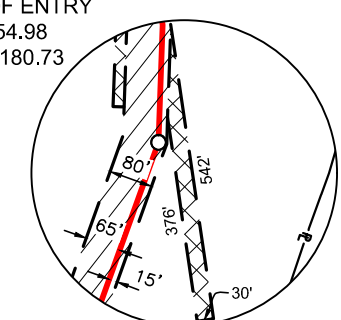
EXHIBIT A
YELLOWSTONE COUNTY, MONTANA
 SECTION 27 & 34, TOWNSHIP 1-N, RANGE 26-E,
 PRINCIPAL MONTANA MERIDIAN
TRACT NO. MT-YE-060.000
 PIPELINE IS 2,853.18 FEET OR 172.92 RODS
 TEMPORARY WORKSPACE IS 3.39 ACRES
 ADDITIONAL TEMPORARY WORKSPACE IS 0.50 ACRES



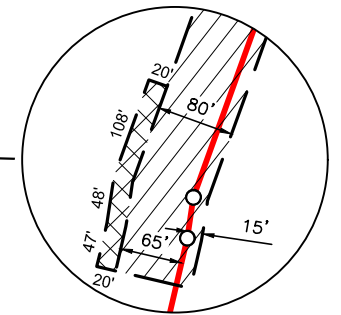
DETAIL "A"
1" = 100'



DETAIL "B"
1" = 200'

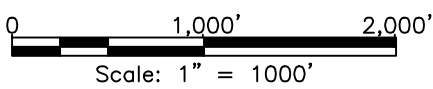
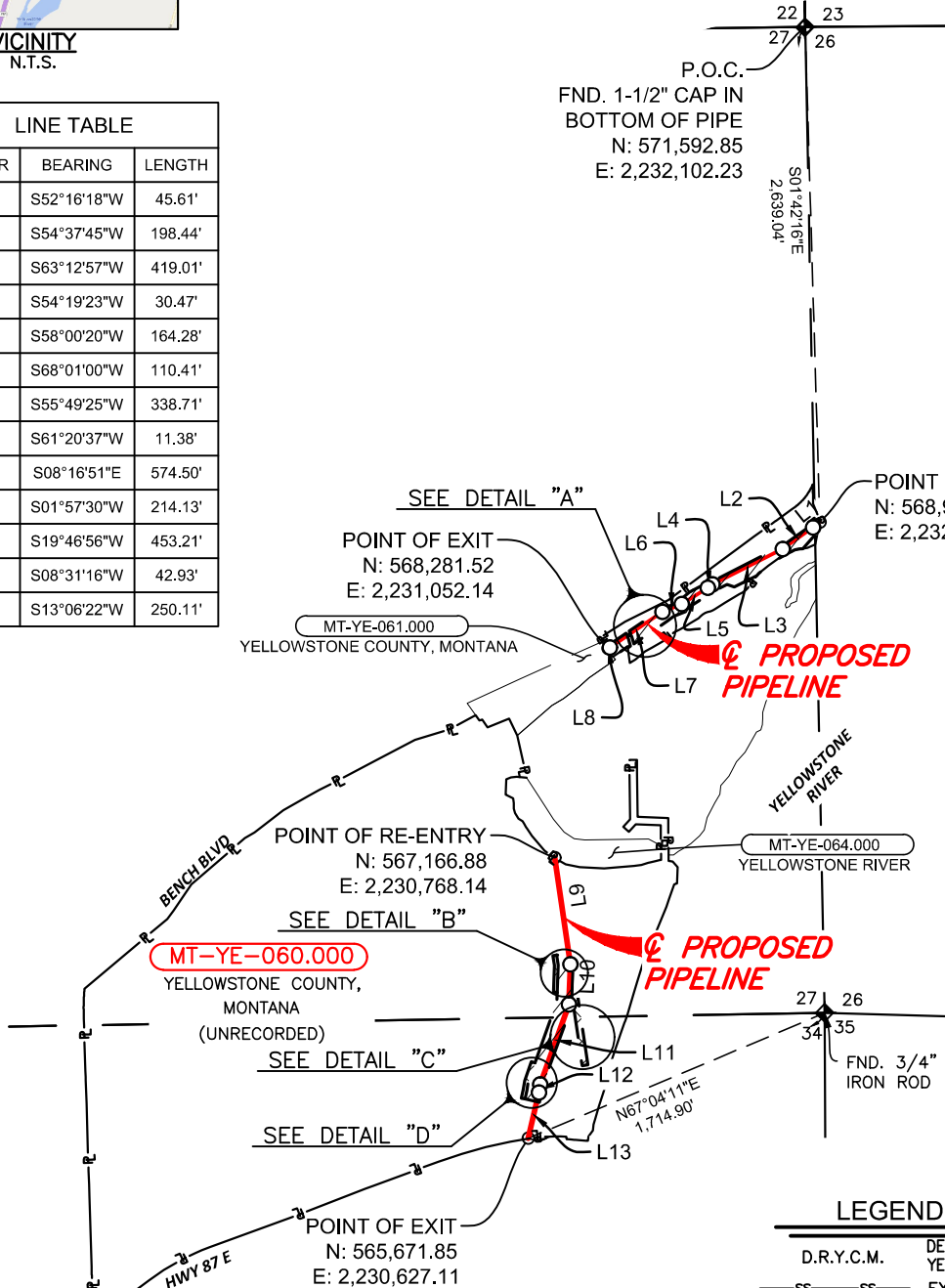


DETAIL "C"
1" = 350'



DETAIL "D"
1" = 200'

LINE TABLE		
NUMBER	BEARING	LENGTH
L1	S52°16'18"W	45.61'
L2	S54°37'45"W	198.44'
L3	S63°12'57"W	419.01'
L4	S54°19'23"W	30.47'
L5	S58°00'20"W	164.28'
L6	S68°01'00"W	110.41'
L7	S55°49'25"W	338.71'
L8	S61°20'37"W	11.38'
L9	S08°16'51"E	574.50'
L10	S01°57'30"W	214.13'
L11	S19°46'56"W	453.21'
L12	S08°31'16"W	42.93'
L13	S13°06'22"W	250.11'



NOTES

- ALL BEARINGS AND COORDINATES ARE BASED ON THE MONTANA STATE PLANE COORDINATE SYSTEM, NORTH AMERICAN DATUM OF 1983 (2011) EPOCH 2010, GEOID18 (CONUS), U.S. SURVEY FEET BASED ON GPS OBSERVATIONS MADE BY AUDUBON FIELD SOLUTIONS, DISTANCES ARE GRID.
- OWNERSHIP AND TRACT INFORMATION SHOWN HEREON IS BASED ON ABSTRACT SERVICES PROVIDED BY CONTRACT LAND STAFF, LLC. THIS EXHIBIT WAS PREPARED WITHOUT A COMMITMENT FOR TITLE INSURANCE. THEREFORE, EASEMENTS OF RECORD MAY EXIST AND ARE NOT SHOWN HEREON.
- THIS SURVEY IS NOT INTENDED TO REPRESENT A BOUNDARY SURVEY.
- EASEMENT LINES ARE INTENDED TO BE CLIPPED OR PROLONGED TO THE DEED LINES.

LEGEND

- D.R.Y.C.M. DEED RECORDS OF YELLOWSTONE COUNTY, MONTANA
- SS— SS EXISTING SANITARY SEWER LINE
- X—X— TOP OF BANK
- X—X— FENCE LINE
- PROPOSED PIPELINE CENTERLINE
- P—P— PROPERTY LINE
- FOUND PROPERTY CORNER AS NOTED
- ◆ FOUND SECTION CORNER AS NOTED
- ▨ CONSTRUCTION WORKSPACE
- ▩ ADDITIONAL CONSTRUCTION WORKSPACE



PHILLIPS 66 CARRIER LLC

GL-09 PIPELINE PROJECT

EXHIBIT OF A PROPOSED PIPELINE ACROSS YELLOWSTONE COUNTY, MONTANA



REV	DESCRIPTION	BY	DATE	CHK'D	APPR.
1	ISSUED	AV	01/10/25	AFS	AFS
0	ISSUED	DMT	09/25/24	AFS	AFS

YELLOWSTONE COUNTY		MONTANA	
DRAWN BY DMT	CHK'D BY AFS	MT-YE-060.000	
SCALE 1" = 1000'	APP'VD BY		
DATE 09/20/24	AFS	REVISION 1	SHEET 1 OF 1

PROJECT NO. 026008-0010

1:10.2025 2:34:20 PM ANDRES VEGA S:\AFS\PROJECTS\PHILLIPS_66\PIPELINE\026008-0010 - GL-09 PRELIMINARY-0\870_MAPPING\010_EXHIBITS\CONSTRUCTION_EXHIBITS\MT-YE-060.000 YELLOWSTONE COUNTY, MONTANA.DWG