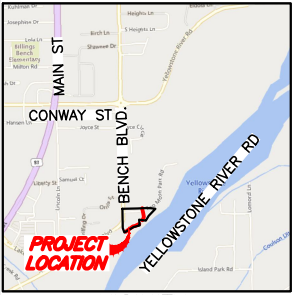
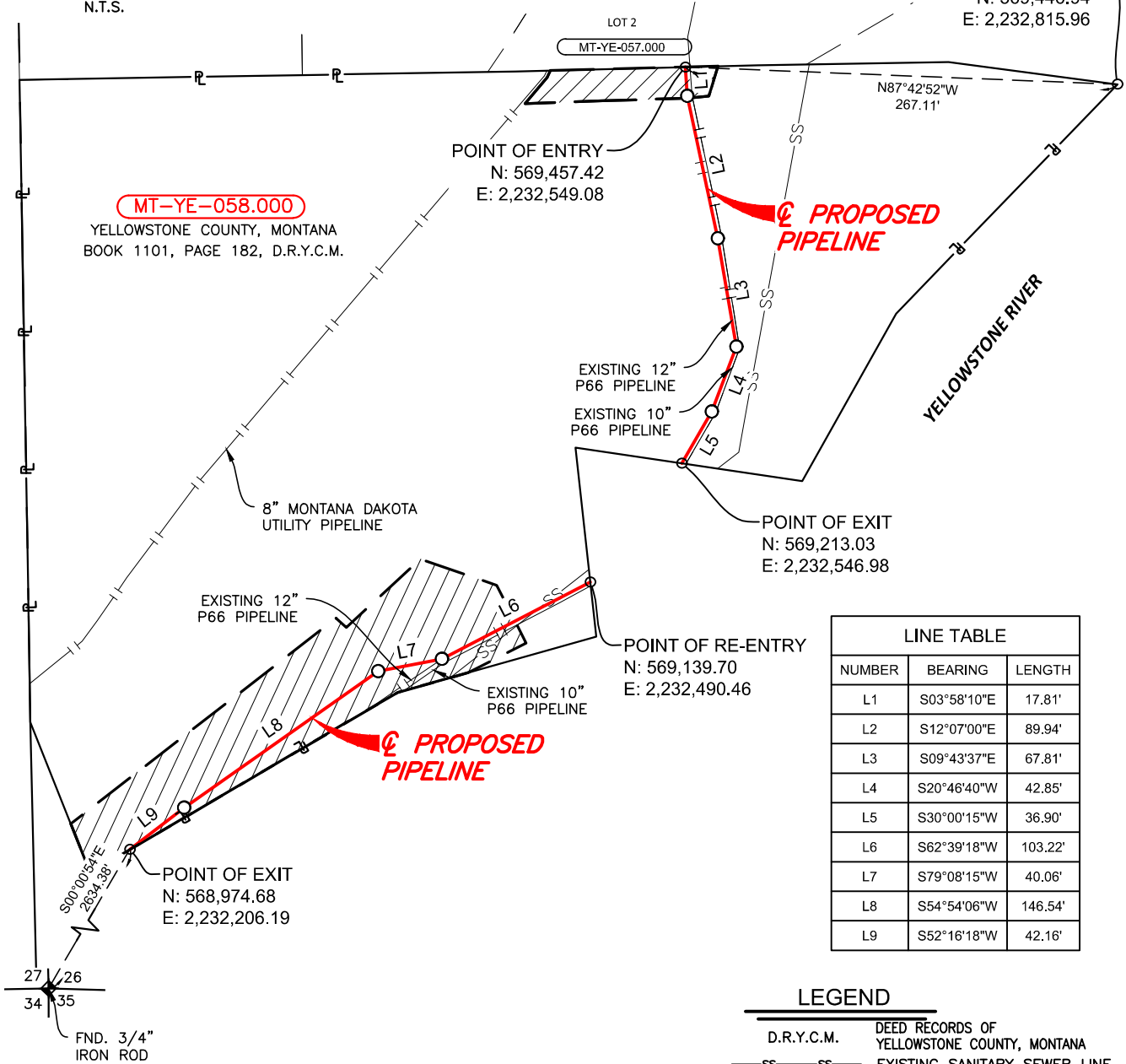


EXHIBIT A
YELLOWSTONE COUNTY, MONTANA
 SECTION 26, TOWNSHIP 1-N, RANGE 26-E, PRINCIPAL
 MONTANA MERIDIAN
TRACT NO. MT-YE-058.000
 YELLOWSTONE COUNTY, MONTANA
 PIPELINE IS 587.30 FEET OR 35.59 RODS
 TEMPORARY WORKSPACE IS 0.40 ACRES



VICINITY
N.T.S.

FND. 3/8" IRON ROD
 N: 569,446.94
 E: 2,232,815.96



LINE TABLE		
NUMBER	BEARING	LENGTH
L1	S03°58'10"E	17.81'
L2	S12°07'00"E	89.94'
L3	S09°43'37"E	67.81'
L4	S20°46'40"W	42.85'
L5	S30°00'15"W	36.90'
L6	S62°39'18"W	103.22'
L7	S79°08'15"W	40.06'
L8	S54°54'06"W	146.54'
L9	S52°16'18"W	42.16'

LEGEND

- D.R.Y.C.M. DEED RECORDS OF YELLOWSTONE COUNTY, MONTANA
- SS EXISTING SANITARY SEWER LINE
- TOP OF BANK
- FENCE LINE
- PROPOSED PIPELINE CENTERLINE
- PROPERTY LINE
- FOUND PROPERTY CORNER AS NOTED
- FOUND SECTION CORNER AS NOTED
- CONSTRUCTION WORKSPACE
- ADDITIONAL CONSTRUCTION WORKSPACE

NOTES

- ALL BEARINGS AND COORDINATES ARE BASED ON THE MONTANA STATE PLANE COORDINATE SYSTEM, NORTH AMERICAN DATUM OF 1983 (2011) EPOCH 2010, GEOID18 (CONUS), U.S. SURVEY FEET BASED ON GPS OBSERVATIONS MADE BY AUDUBON FIELD SOLUTIONS, DISTANCES ARE GRID.
- OWNERSHIP AND TRACT INFORMATION SHOWN HEREON IS BASED ON ABSTRACT SERVICES PROVIDED BY CONTRACT LAND STAFF, LLC. THIS EXHIBIT WAS PREPARED WITHOUT A COMMITMENT FOR TITLE INSURANCE. THEREFORE, EASEMENTS OF RECORD MAY EXIST AND ARE NOT SHOWN HEREON.
- THIS SURVEY IS NOT INTENDED TO REPRESENT A BOUNDARY SURVEY.
- EASEMENT LINES ARE INTENDED TO BE CLIPPED OR PROLONGED TO THE DEED LINES.



REV	DESCRIPTION	BY	DATE	CHK'D	APPR.
0	ISSUED	DMT	09/20/24	AFS	AFS



GL-09 PIPELINE PROJECT	
EXHIBIT OF A PROPOSED PIPELINE ACROSS YELLOWSTONE COUNTY, MONTANA	
YELLOWSTONE COUNTY	MONTANA
MT-YE-058.000	
PROJECT NO. 026008-0010	DATE 09/11/24
SCALE 1" = 100'	REVISION 0 SHEET 1 OF 1

9.20.2024 2:17:45 PM JACOB FISHER S:\AFS\PROJECTS\PHILLIPS_66\PIPELINE\026008-0010 - GL-09 PRELIMINARY\010_EXHIBITS\CONSTRUCTION EXHIBITS\MT-YE-058.000 YELLOWSTONE COUNTY, MONTANA.DWG