

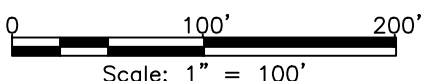
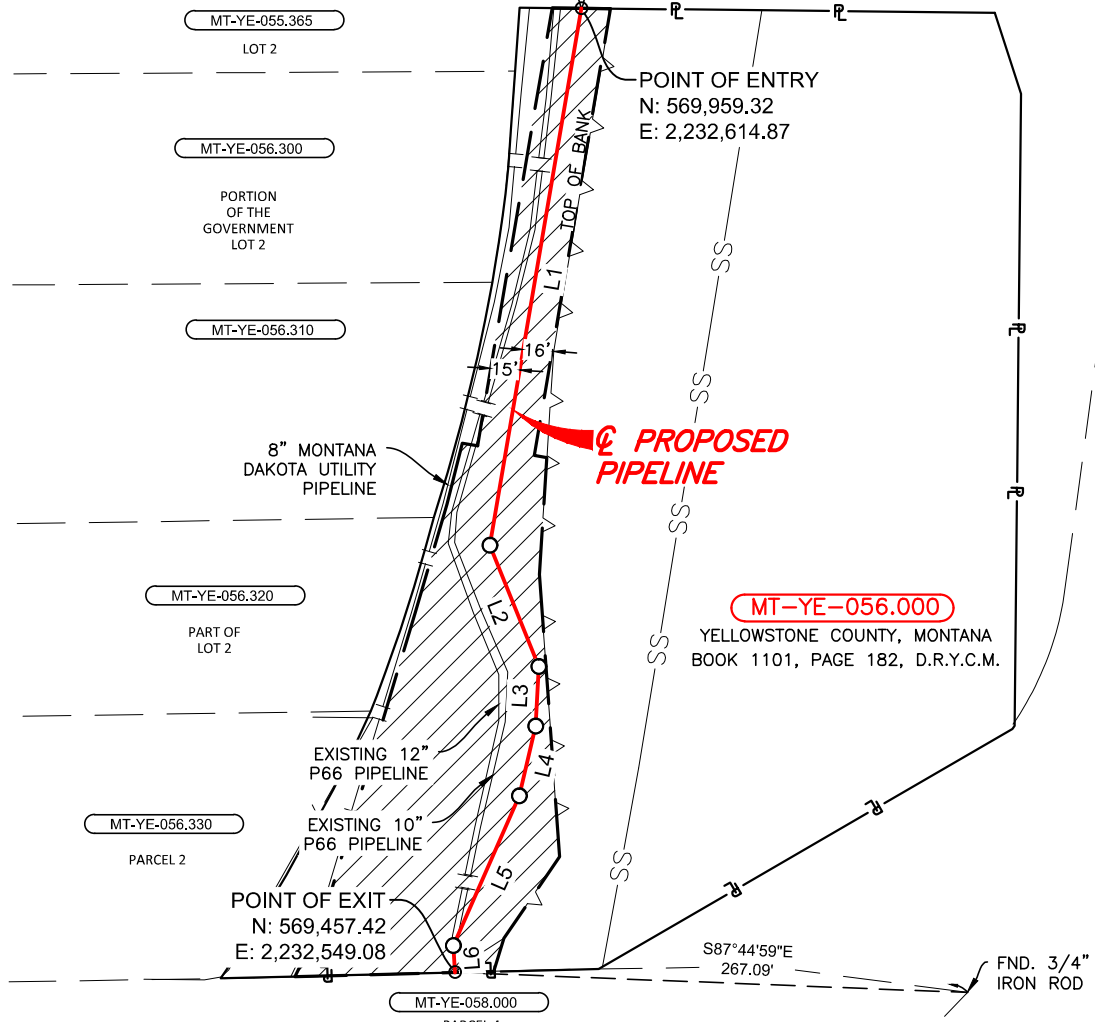


VICINITY
N.T.S.

EXHIBIT A
YELLOWSTONE COUNTY, MONTANA
 SECTION 26, TOWNSHIP 1-N, RANGE 26-E, PRINCIPAL
 MONTANA MERIDIAN
TRACT NO. MT-YE-056.000
 YELLOWSTONE COUNTY, MONTANA
 PIPELINE IS 519.32 FEET OR 31.47 RODS
 CONSTRUCTION WORKSPACE IS 0.67 ACRES

LINE TABLE		
NUMBER	BEARING	LENGTH
L1	S09°40'34"W	283.59'
L2	S21°58'13"E	68.09'
L3	S02°54'42"W	31.06'
L4	S13°14'15"W	37.35'
L5	S23°49'57"W	85.21'
L6	S03°58'10"E	14.03'

FND. 1-1/2" CAP IN
 BOTTOM OF PIPE
 N: 571,592.85
 E: 2,232,102.23



NOTES

- ALL BEARINGS AND COORDINATES ARE BASED ON THE MONTANA STATE PLANE COORDINATE SYSTEM, NORTH AMERICAN DATUM OF 1983 (2011) EPOCH 2010, GEOID18 (CONUS), U.S. SURVEY FEET BASED ON GPS OBSERVATIONS MADE BY AUDUBON FIELD SOLUTIONS, DISTANCES ARE GRID.
- OWNERSHIP AND TRACT INFORMATION SHOWN HEREON IS BASED ON ABSTRACT SERVICES PROVIDED BY CONTRACT LAND STAFF, LLC. THIS EXHIBIT WAS PREPARED WITHOUT A COMMITMENT FOR TITLE INSURANCE. THEREFORE, EASEMENTS OF RECORD MAY EXIST AND ARE NOT SHOWN HEREON.
- THIS SURVEY IS NOT INTENDED TO REPRESENT A BOUNDARY SURVEY.
- EASEMENT LINES ARE INTENDED TO BE CLIPPED OR PROLONGED TO THE DEED LINES.

LEGEND

- D.R.Y.C.M. DEED RECORDS OF YELLOWSTONE COUNTY, MONTANA
- SS— SS— EXISTING SANITARY SEWER LINE
- x—x— TOP OF BANK
- x—x— FENCE LINE
- P—P— PROPOSED PIPELINE CENTERLINE
- P—P— PROPERTY LINE
- FOUND PROPERTY CORNER AS NOTED
- ◆ FOUND SECTION CORNER AS NOTED
- ▨ CONSTRUCTION WORKSPACE
- ▩ ADDITIONAL CONSTRUCTION WORKSPACE



PHILLIPS 66 CARRIER LLC

GL-09 PIPELINE PROJECT

EXHIBIT OF A PROPOSED PIPELINE ACROSS
 YELLOWSTONE COUNTY, MONTANA

YELLOWSTONE COUNTY		MONTANA	
DRAWN BY	DMT	CHK'D BY	AFS
SCALE	1" = 100'	APP'VD BY	AFS
DATE	09/11/24	REVISION	0



REV	DESCRIPTION	BY	DATE	CHK'D	APPR.
0	ISSUED	DMT	09/19/24	AFS	AFS

PROJECT NO. 026008-0010

MT-YE-056.000
 SHEET 1 OF 1

9.20.2024 2:10:02 PM JACOB FISHER S:\AFS\PROJECTS\PHILLIPS_66\PIPELINE\026008-0010 - GL-09 PRELIMINARY\010_MAPPING\010_EXHIBITS\CONSTRUCTION EXHIBITS\MT-YE-056.000 YELLOWSTONE COUNTY, MONTANA.DWG