

COMMISSIONER MEETINGS

All meetings take place in the Commissioners Conference Room (3107)
located in the Stillwater Building @ 316 North 26th Street (3rd Floor)
and are open to the public unless otherwise noted

MONDAY - AUGUST 26, 2024

8:15 Calendar

8:30 Department Meetings

1. **Department Head Meeting - Public Works, Facilities & DES**
2. **Human Resources**
3. **Finance**
 - a. Travel Policy
4. **Legal/Litigation**

2:00 COMMISSIONERS DISCUSSION

PLEDGE

DEPARTMENTS

1. **City of Billings** - Stillwater Building Construction and Operations Update
2. **Rod Ostermiller** - Mental Health at YCDF
3. **MetraPark** - First Interstate Arena Standard Security Procedures
4. **Finance** -
 - a. Metra ARPA Invitation for Bid South Expo Lot
 - b. Metra IFB Outdoor Arena Bleachers

COMMISSIONERS

1. Commissioner Board Reports

PUBLIC COMMENTS ON COUNTY BUSINESS

TUESDAY – AUGUST 27, 2024

9:15 Agenda Setting

9:30 COMMISSIONERS BOARD MEETING

B.O.C.C Monday Discussion

3. a.

Meeting Date: 08/26/2024

Title: Travel Policy

Submitted By: Erika Guy

TOPIC:

Travel Policy

BACKGROUND:

NA

RECOMMENDED ACTION:

Discuss

B.O.C.C Monday Discussion

1.

Meeting Date: 08/26/2024

Title: City of Billings - Stillwater Building Construction and Operations Update

Submitted By: Erika Guy

TOPIC:

City of Billings - Stillwater Building Construction and Operations Update

BACKGROUND:

NA

RECOMMENDED ACTION:

Discuss

Attachments

City Hall

NEW CITY HALL RENOVATION

SEPTEMBER 2024 UPDATE



PHOTO BY PAUL WHITING

CONSTRUCTION SCHEDULE UPDATE

Construction activities for the month of September 2024 entail the following:

- **Finishes**
 - Ceiling assemblies in elevator lobbies for 5th, 4th, 2nd
 - Painting on 2nd
 - Countertops on 1st
- **Furniture**
 - Ongoing on 2nd floor
- **MEP**
 - Trim out
- **Site Work**
 - Landscaping
- **County Impacts**
 - Public Corridor on 1st floor will be relocated so the west side of 1st floor can be completed

B.O.C.C Monday Discussion

2.

Meeting Date: 08/26/2024

Title: Rod Ostermiller - Mental Health at YCDF

Submitted By: Erika Guy

TOPIC:

Rod Ostermiller - Mental Health at YCDF

BACKGROUND:

NA

RECOMMENDED ACTION:

Discuss

B.O.C.C Monday Discussion

3.

Meeting Date: 08/26/2024

Title: First Interstate Arena Standard Security Procedures

Submitted For: Tim Goodridge

Submitted By: Erika Guy

TOPIC:

MetraPark - First Interstate Arena Standard Security Procedures

BACKGROUND:

See Attachment

RECOMMENDED ACTION:

Discuss

Attachments

First Interstate Arena Standard Security Procedures



STANDARD OPERATING PROCEDURES

Title: Restricting and securing
access in the arena _____

Department: Administration _____

ID Code: ALL-ADM-006 _____

Author: Tim Goodridge _____

**Department
Approval by:** _____

Approval Date: _____

**Dates of
Amendments:** _____

**Next Scheduled
Review:** _____

Purpose

To establish standard operating procedures (SOP) for access to restricted areas within First Interstate Arena.

Scope

The SOP applies to First Interstate Arena.

Procedures

1. First Interstate Arena is a restricted facility and unauthorized people or persons are not allowed anywhere in the arena. The exception is the public lobby during designated business hours.
2. Credentials are required for authorization to access the arena and must always be visible.
3. Persons without visible, valid credentials will be stopped and escorted from the arena, if credentials are not produced. **There are no exceptions to this rule** - no credentials no access.
4. Authorized credentials are defined as follows:
 - A. MetraPark staff – Metra Park issued photo ID credentials.



STANDARD OPERATING PROCEDURES

- B. Yellowstone County staff – County issued photo ID credentials during regular business hours and in unrestricted areas.
 - C. Event contractors – photo ID credentials for key personnel (CMS, DiA, IATSE)
 - D. Event day staff - issued designated wristbands for events. (MetraPark, CMS, DiA, IATSE)
 - E. Artist/Tours – provide their own credentials. Credential information needs to be shared prior to or upon tour arrival for the creation of Access Credential Boards
 - F. Building contractors – issued building credentials upon check-in with government issued photo ID. Standard check-in is with the facilities department. Recommend that you hold the government issued ID until the temporary ID is returned.
 - G. Guests - issued building credentials upon check-in with government issues photo ID at the box office. Same procedure, hold the ID until the return of the government issues photo ID
5. Event contractors are responsible for ensuring that all the event day staff under their supervision are properly credentialed on the day of every event.
 6. On-duty law enforcement personnel are exempt from credentialling.
 7. Credential boards (flyer with photos of all the events wristbands and credentials) will be posted in designated areas and shared with authorized personnel on event days. The Production Department is responsible for the creation and distribution of credential boards. Credential boards should designate the area of access for all credentials

B.O.C.C Monday Discussion

4. a.

Meeting Date: 08/26/2024

Title: Metra Invitation for Bid South Expo Lot

Submitted For: James Matteson, Purchasing Agent

Submitted By: James Matteson, Purchasing Agent

TOPIC:

Metra ARPA Invitation for Bid South Expo Lot

BACKGROUND:

Release of Invitation for Bid for Metra South Expo Lot. Project Information to be presented. Release on Tuesday August 27th.

RECOMMENDED ACTION:

Discussion

Attachments

Metra South Expo Lot -brief



Project Manual

MetraPark South Expo Lot

Construction Project



AUGUST 2024

METRAPARK

MONTANA'S ENTERTAINMENT & TRADE CENTER

TABLE OF CONTENTS

INVITATION TO BID

INSTRUCTIONS TO BIDDERS

BID SUBMITTAL PACKAGE (TO BE EXECUTED AND SUBMITTED FOR BID BY CONTRACTOR)

- BID FORM
- BID BOND

AGREEMENT

PERFORMANCE BOND

PAYMENT BOND

STANDARD GENERAL CONDITIONS AND SUPPLEMENTARY CONDITIONS – BY REFERENCE

SPECIAL PROVISIONS

Section 00910 - Project Specific Special Provisions

CONTRACTORS INSURANCE GUIDE

DISADVANTAGED BUSINESS ENTERPRISE DOCUMENTS

CERTIFICATION REGARDING DEBARMENT

GEOTECHNICAL REPORT

CONSTRUCTION DRAWINGS

DIVISION 0 – BIDDING AND CONTRACT REQUIREMENTS
SECTION 00100 INVITATION TO BID

Separate sealed bids for construction of the South Expo Lot Construction Project will be received by Yellowstone County, Montana at Yellowstone County Commissioner's Office, 316 N 26th Room 3101, Billings, MT until 3 pm local time on August 30th and then publicly opened and read aloud on September 3rd at the Board of County Commissioners meeting.

The project consists of asphalt reconstruction to include milling of asphalt, grading, paving, concrete removal and placement, water main and service replacement, sanitary sewer main and service replacement, and storm drain improvement and replacement.

Five (5) copies of the bid (1 original, 4 copies) must be submitted.

Digital copies of the Bidding Documents including Drawings and the Project Manual are available at Billings Builder's Exchange.

There will be a Pre-Bid Conference at the office of WWC Engineering, 550 S 24th St W Suite 201, Billings, MT, on August 22nd at 10 am local time. Interested Contractors are highly encouraged to attend.

All questions shall be submitted by August 21st at 5 pm local time.

CONTRACTOR and any of the CONTRACTOR'S Subcontractors bidding or doing work on this project will be required to be registered with the Montana Department of Labor and Industry (DLI). Forms for registration are available from the Department of Labor and Industry, PO Box 8011, 1805 Prospect, Helena MT 59604-8011. Information on registration can be obtained by calling (406) 444-7734. All laborers and mechanics employed by Contractor or Subcontractors in performance of the construction work shall be paid wages at rates as required by The Contractor must ensure that employees and applicants for employment are not discriminated against because of their race, color, religion, sex, or national origin.

Each bid must be accompanied by a Certified Check, Cashier's Check, or Bid Bond payable to Yellowstone County, MT, in an amount not less than ten percent (10%) of the total amount of the bid. Successful Bidders shall furnish an approved Performance Bond and a Labor and Materials Payment Bond, each in the amount of one hundred percent (100%) of the contract amount. Insurance, as required, shall be provided by the successful Bidder(s) and a certificate(s) of that insurance shall be provided.

This project is funded in part or in whole with grant/loan funding from American Rescue Plan Act (ARPA) of 2021.

Award of the project will be contingent upon receiving funding and award concurrence from Yellowstone County Commissioners.

Bids may only be withdrawn as provided in Article 15 of the Instructions to Bidders.

The Montana 1% Gross Receipts Tax applies to this project.

The right is reserved to reject any or all proposals received, to waive informalities, to postpone the award of the contract for a period not to exceed sixty (60) days, and to accept the lowest responsive and responsible bid that is in the best interest of the Owner.

Yellowstone County, Montana is an Equal Opportunity Employer.

Published at Yellowstone County News, Montana, this 16th day of August, 2024.

Published at Yellowstone County News, Montana, this 23rd day of August, 2024.

Published at Yellowstone County News, Montana, this 30th day of August, 2024.

(Title)

(Address)

END OF SECTION 00100

INSTRUCTIONS TO BIDDERS FOR CONSTRUCTION CONTRACT

TABLE OF CONTENTS

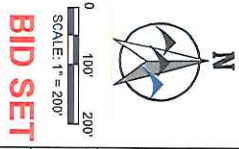
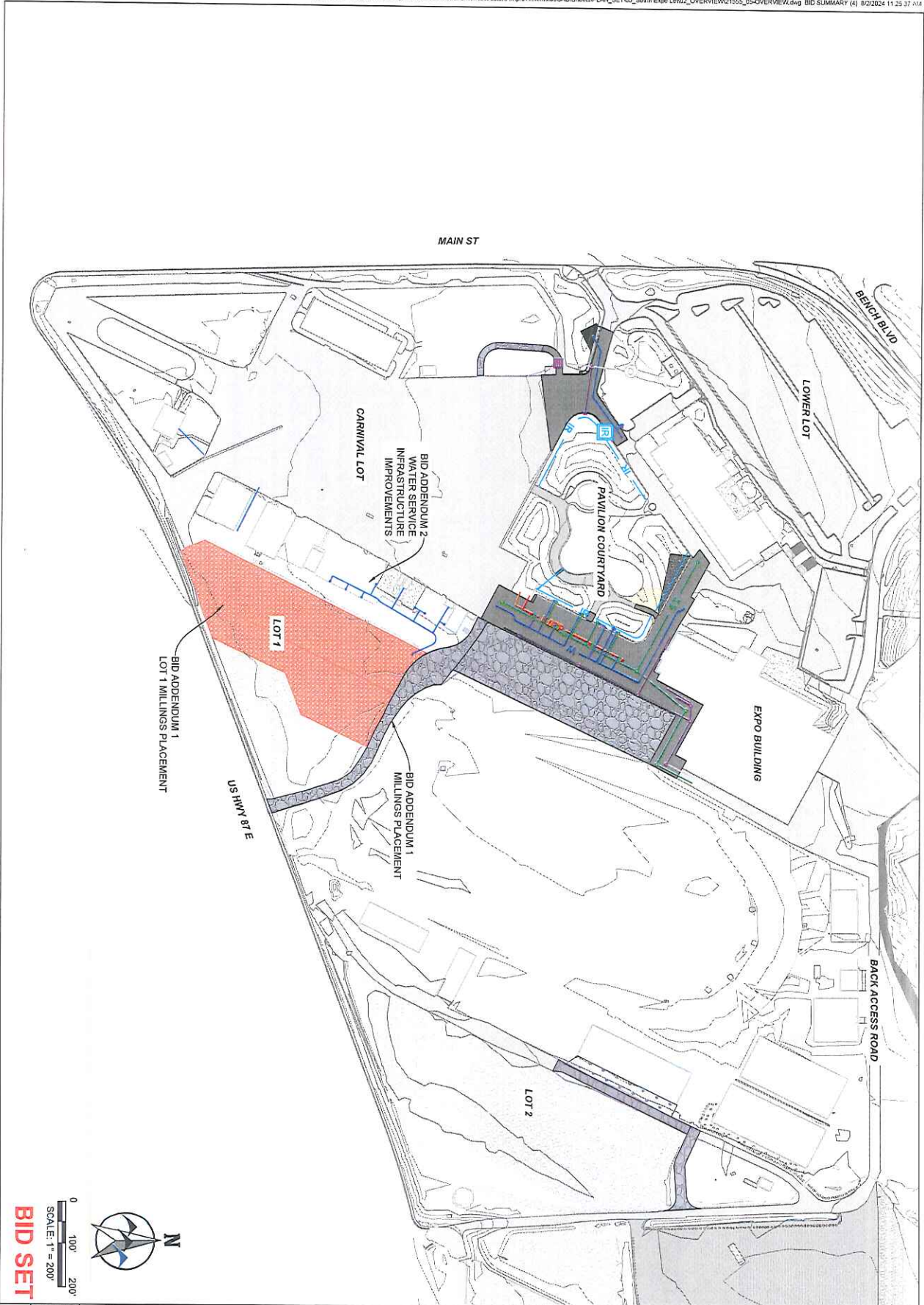
	Page
ARTICLE 1—DEFINED TERMS.....	2
ARTICLE 2—BIDDING DOCUMENTS	2
ARTICLE 3—QUALIFICATIONS OF BIDDERS	3
ARTICLE 4—PRE-BID CONFERENCE	4
ARTICLE 5—SITE AND OTHER AREAS; EXISTING SITE CONDITIONS; EXAMINATION OF SITE; OWNER’S SAFETY PROGRAM; OTHER WORK AT THE SITE	4
ARTICLE 6—BIDDER’S REPRESENTATIONS AND CERTIFICATIONS.....	6
ARTICLE 7—INTERPRETATIONS AND ADDENDA	6
ARTICLE 8—BID SECURITY	7
ARTICLE 9—CONTRACT TIMES	7
ARTICLE 10—SUBSTITUTE AND “OR EQUAL” ITEMS.....	7
ARTICLE 11—SUBCONTRACTORS, SUPPLIERS, AND OTHERS.....	8
ARTICLE 12—PREPARATION OF BID.....	8
ARTICLE 13—BASIS OF BID.....	9
ARTICLE 14—SUBMITTAL OF BID	10
ARTICLE 15—MODIFICATION AND WITHDRAWAL OF BID.....	11
ARTICLE 16—OPENING OF BIDS.....	11
ARTICLE 17—BIDS TO REMAIN SUBJECT TO ACCEPTANCE	11
ARTICLE 18—EVALUATION OF BIDS AND AWARD OF CONTRACT	11
ARTICLE 19—BONDS, INSURANCE, AND TAX.....	12
ARTICLE 20—SIGNING OF AGREEMENT	12
ARTICLE 21—STATE LAWS AND REGULATIONS	13
END OF SECTION	13



EXPO SOUTH LOT CONSTRUCTION PROJECT CONSTRUCTION ZONES YELLOWSTONE COUNTY, MT	PREPARED FOR YELLOWSTONE COUNTY METRAPARK ARENA 308 6TH AVE N.E. BILLINGS, MT 59101	DESIGNED BY: <u> </u> DRAWN BY: <u> </u> CHECKED BY: <u> </u> DATE: <u> </u>
	PREPARED BY  WWC ENGINEERING 550 S. 24TH ST. W., SUITE 201 BILLINGS, MT 59102 (406) 694-2210 www.wwcengineering.com	SHEET <div style="text-align: center; font-size: 24pt; font-weight: bold;">1</div>



EXPO SOUTH LOT CONSTRUCTION PROJECT CONSTRUCTION ZONES YELLOWSTONE COUNTY, MT	PREPARED FOR YELLOWSTONE COUNTY	METRAPARK ARENA 308 6TH AVE N. BILLINGS, MT 59101	DESIGNED BY: <u> </u> DRAWN BY: <u> </u> CHECKED BY: <u> </u> DATE: <u> </u>
	PREPARED BY  WWC ENGINEERING	650 S. 24TH ST. W., SUITE 201 BILLINGS, MT 59102 (406) 894-2210 www.wwcengineering.com	SHEET 1



BID SET

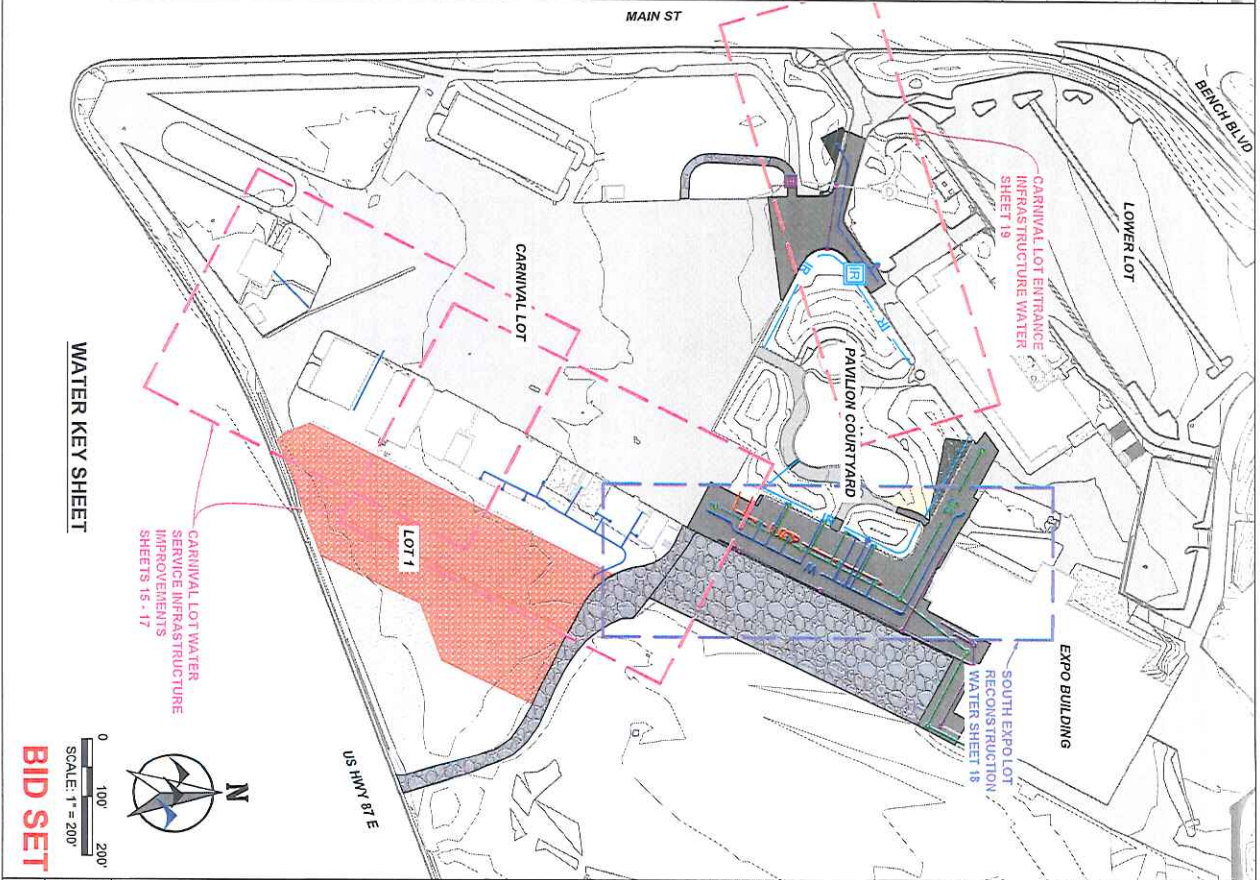
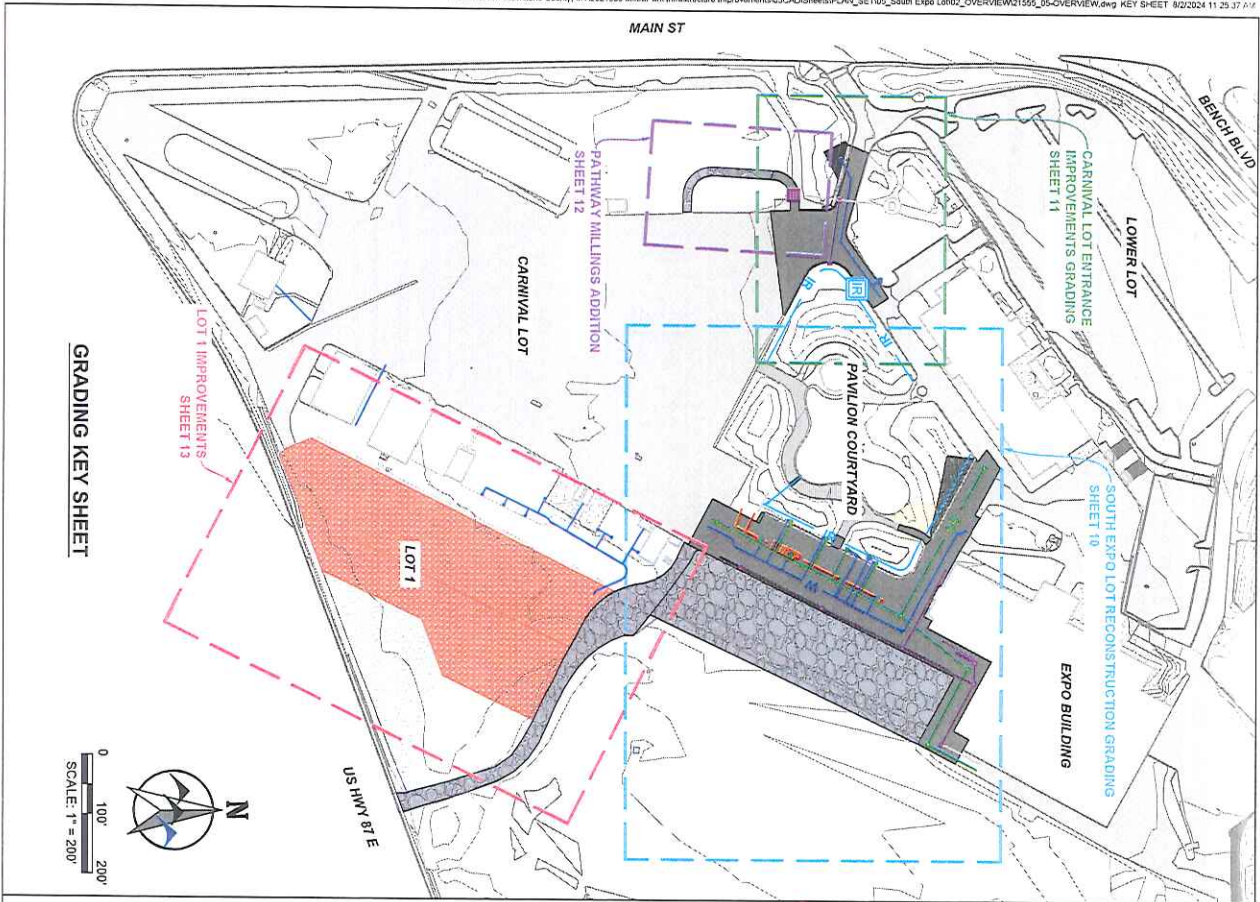
SHEET
4

YELLOWSTONE COUNTY
SOUTH EXPO LOT CONSTRUCTION PROJECT
BID ADDENDUM PROJECT SUMMARY SHEET
BILLINGS, MT

PREPARED BY
WWC ENGINEERING
550 S. 24TH ST. W., SUITE 201
BILLINGS, MT 59102
(406) 894-2210
www.wwcengineering.com

NO.	REVISION	BY	DATE

PROJECT NO. 2021-555



BID SET

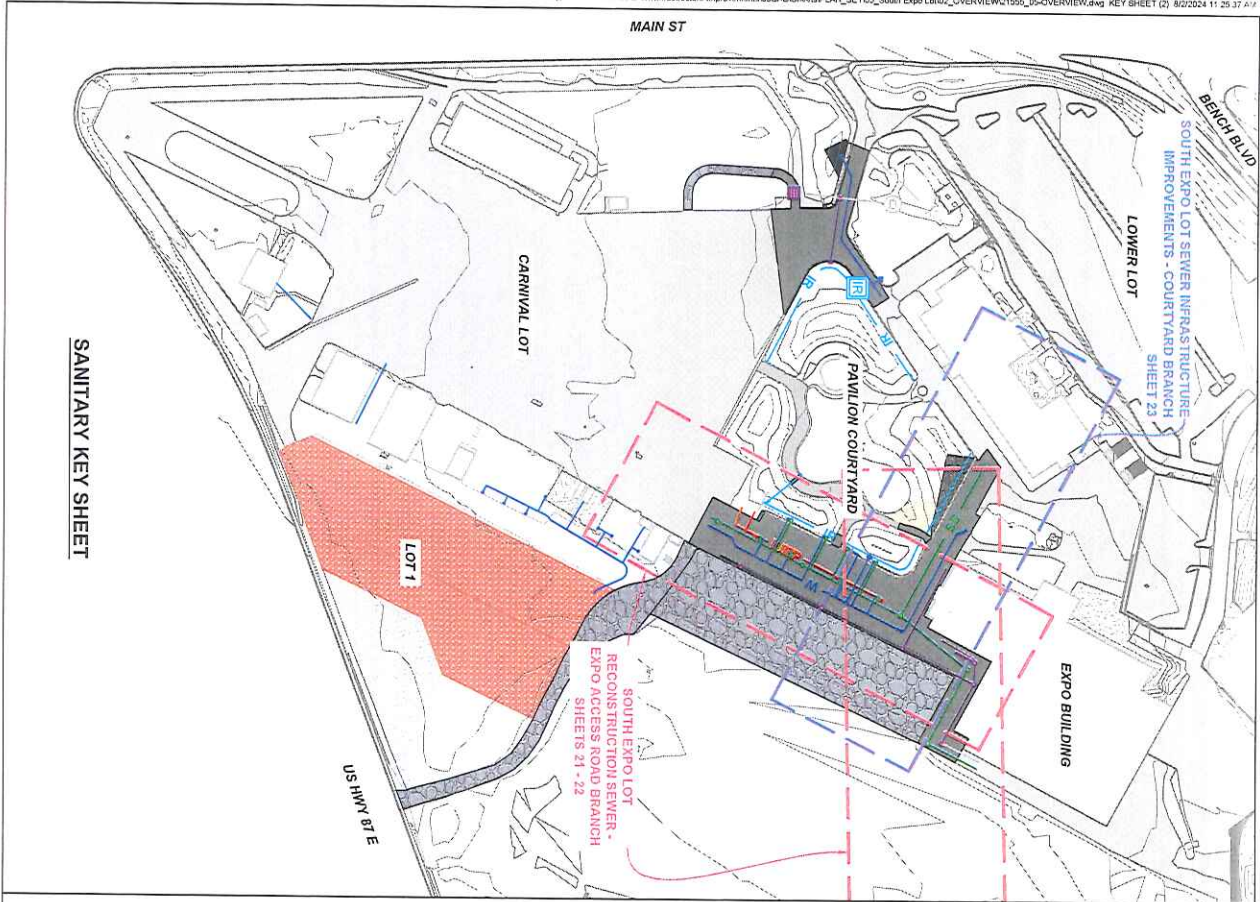
DESIGNED BY: JMD
 DRAWN BY: ZSL
 CHECKED BY: GJR
 DATE: 8/2/24
 SHEET 5

YELLOWSTONE COUNTY
 SOUTH EXPO LOT CONSTRUCTION PROJECT
PROJECT OVERVIEW KEY SHEET
 BILLINGS, MT

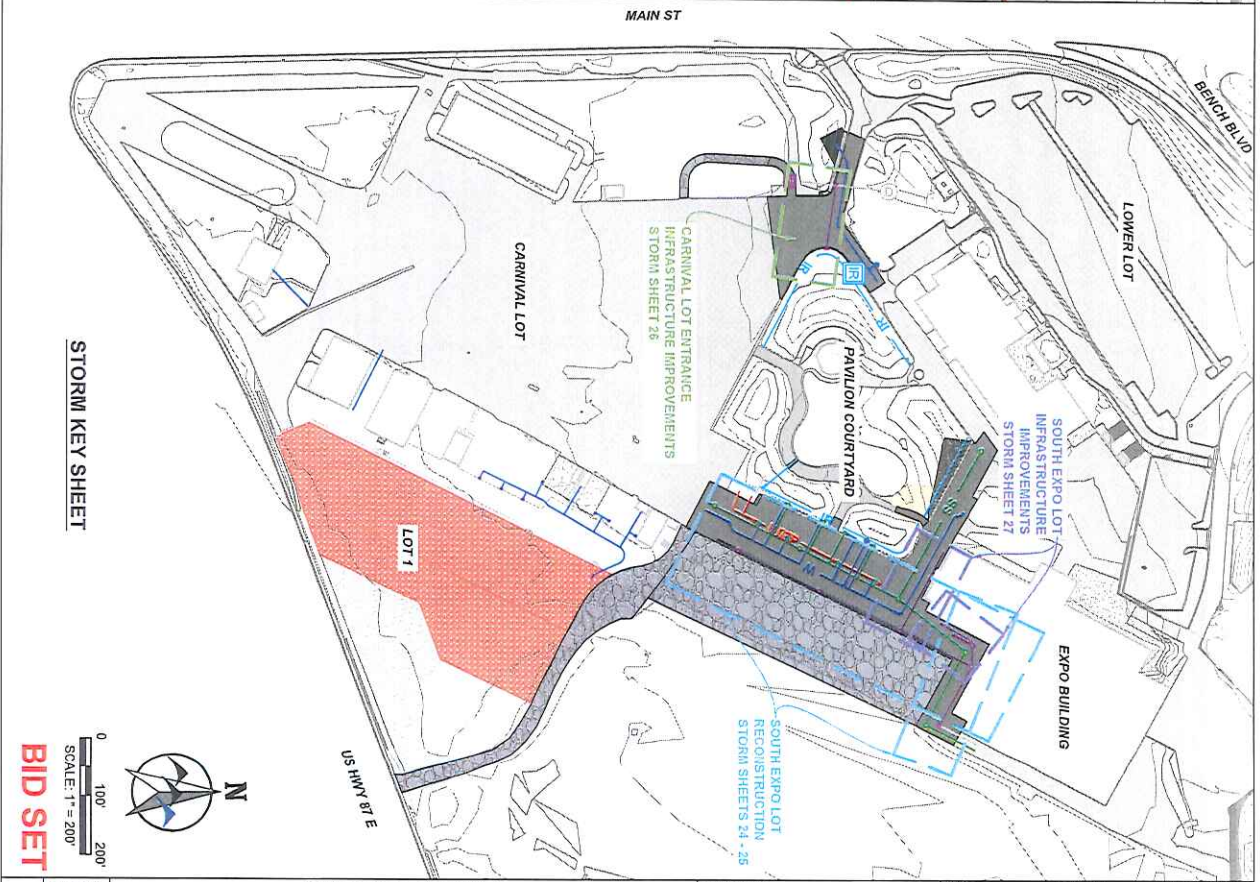
PREPARED BY
WWC ENGINEERING
 550 S. 24TH ST., W. SUITE 201
 BILLINGS, MT 59102
 (406) 894-2210
 www.wwcengineering.com

NO.	REVISION	BY	DATE

PROJECT NO. 2021-555



SANITARY KEY SHEET



STORM KEY SHEET

0 100' 200'

SCALE: 1" = 200'

BID SET

DESIGNED BY: JMD
 DRAWN BY: ZSL
 CHECKED BY: GJR
 DATE: 8/20/24
 SHEET
6

YELLOWSTONE COUNTY
 SOUTH EXPO LOT CONSTRUCTION PROJECT
PROJECT OVERVIEW KEY SHEET
 BILLINGS, MT

PREPARED BY
WWC ENGINEERING
 550 S. 24TH ST., W., SUITE 201
 BILLINGS, MT 59102
 (406) 894-2210
 www.wwcengineering.com

NO.	REVISION	BY	DATE

PROJECT NO. 2021-555

ITEM	UNIT	QUANTITY		REMARKS
		FILL	CUT	
CARNIVAL LOT ENTRANCE	CY	600		CUT/FILL TO ASPHALT SUBGRADE EXCLUDES CONCRETE CUT/FILL
SOUTH EXPO LOT - ASPHALT PAVEMENT	CY	84	2,300	CUT/FILL TO ASPHALT SUBGRADE EXCLUDES CONCRETE CUT/FILL
SOUTH EXPO LOT - ASPHALT MILLINGS	CY	1,655	289	CUT/FILL TO SUBGRADE
TOTAL	CY	1,739	3,469	

SURFPACING				
ITEM	UNIT	QUANTITY	REMARKS	
4" ASPHALT PAVEMENT - 10" CRUSHED BASE	SY	2,293	SOUTH EXPO LOT	
4" ASPHALT PAVEMENT - 10" CRUSHED BASE	SY	2,293	CARNIVAL LOT ENTRANCE	
4" ASPHALT MILLINGS	SY	304	PATHWAY MILLINGS ADJUNCTION	
4" ASPHALT MILLINGS	SY	7,048	SOUTH EXPO LOT	
4" ASPHALT MILLINGS	SY	567	OPEN/EAR BARN ROAD	
6" THICKNESS CRUSHED BASE	SY	7,988	SOUTH EXPO LOT	
6" THICKNESS CRUSHED BASE	SY	738	OPEN/EAR BARN ROAD	
6" THICKNESS CRUSHED BASE	SY	12,399	LOT 1	
4" ASPHALT MILLINGS	SY	2,339	BD ADDENDUM 1 - LOT 1	
4" ASPHALT MILLINGS	SY	12,399	BD ADDENDUM 1 - GATE 2 ACCESS ROAD	

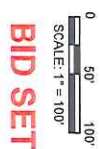
ID	LOCATION	PLAN QUANTITY		REMARKS
		CONCRETE CURB & GUTTER (LF)	CONCRETE FLATWORK (SF)	
NS-01	SOUTH EXPO LOT	154		REBORN
NS-02	SOUTH EXPO LOT	185		REBORN
NS-03	SOUTH EXPO LOT	123		REBORN
NS-04	SOUTH EXPO LOT		657	NEW GUTTER
NS-05	CARNIVAL LOT ENTRANCE		715	SEWALK
NS-06	CARNIVAL LOT ENTRANCE		101	ADA RAMP
NS-07	CARNIVAL LOT ENTRANCE	165		CURB
NS-08	CARNIVAL LOT ENTRANCE	194		CURB
NS-09	ARENA BACK LOT	20		CURB
BD ADD 2	CARNIVAL LOT WATER		129	SEWALK
BD ADD 2	CARNIVAL LOT WATER		18	SEWALK
BD ADD 2	CARNIVAL LOT WATER		30	SEWALK

TOTAL	CONCRETE CURB AND GUTTER (LF)		CONCRETE FLATWORK (SF)		CONCRETE ADA RAMP (SF)	
	379	462	715	101	657	175

NOTES:
 1. DESCRIBE IN THE REMARKS COLUMN CORRESPONDS TO THE LEGEND LABELS ON IMPROVEMENT SHEETS.
 2. INSTALL ID NUMBERS IN MATCHES CONCRETE REMOVAL SUMMARY TABLE AS APPLICABLE.

CONCRETE REMOVAL						
ID	LOCATION	PLAN DIMENSIONS	UNIT	QUANTITY	REMARKS	
REMO1	SOUTH EXPO LOT	114	SF	5.7	CONCRETE PAD	
REMO2	CARNIVAL LOT ENTRANCE	716	SF	79.6	SEWALK	
REMO3	CARNIVAL LOT ENTRANCE	578	SF	64.0	VALLEY GUTTER	
REMO4	CARNIVAL LOT ENTRANCE	20	SF	4.4	CURB	
TOTAL			SF	179		

NOTES:
 1. CURB & GUTTER REMOVAL IS REBORN AS A STANDARD 2' WIDTH FOR SV CALCULATIONS.
 2. DESCRIBE IN THE REMARKS COLUMN CORRESPONDS TO THE LEGEND LABELS ON IMPROVEMENT SHEETS.
 3. ADDITIONAL 10% ADDED TO BID FORM QUANTITY FOR UNDEFINITE CONCRETE REMOVAL.



BID SET

DESIGNED BY: JMD
 DRAWN BY: ZSR
 CHECKED BY: GFR
 DATE: 6/6/2024
 SHEET 7

YELLOWSTONE COUNTY
 SOUTH EXPO LOT CONSTRUCTION PROJECT
SUMMARY TABLES
 BILLINGS, MT

PREPARED BY

 550 S. 24TH ST. W. SUITE 201
 BILLINGS, MT 59102
 (406) 694-2210
 www.wwcengineering.com

NO.	REVISION	BY	DATE

PROJECT NO. 2021-555

B.O.C.C Monday Discussion

4. b.

Meeting Date: 08/26/2024

Title: Metra IFB Outdoor Arena Bleachers

Submitted For: James Matteson, Purchasing Agent

Submitted By: James Matteson, Purchasing Agent

TOPIC:

Metra IFB Outdoor Arena Bleachers

BACKGROUND:

Release an Invitation for bid for Outdoor Arena Bleachers on Tuesday August 27th

RECOMMENDED ACTION:

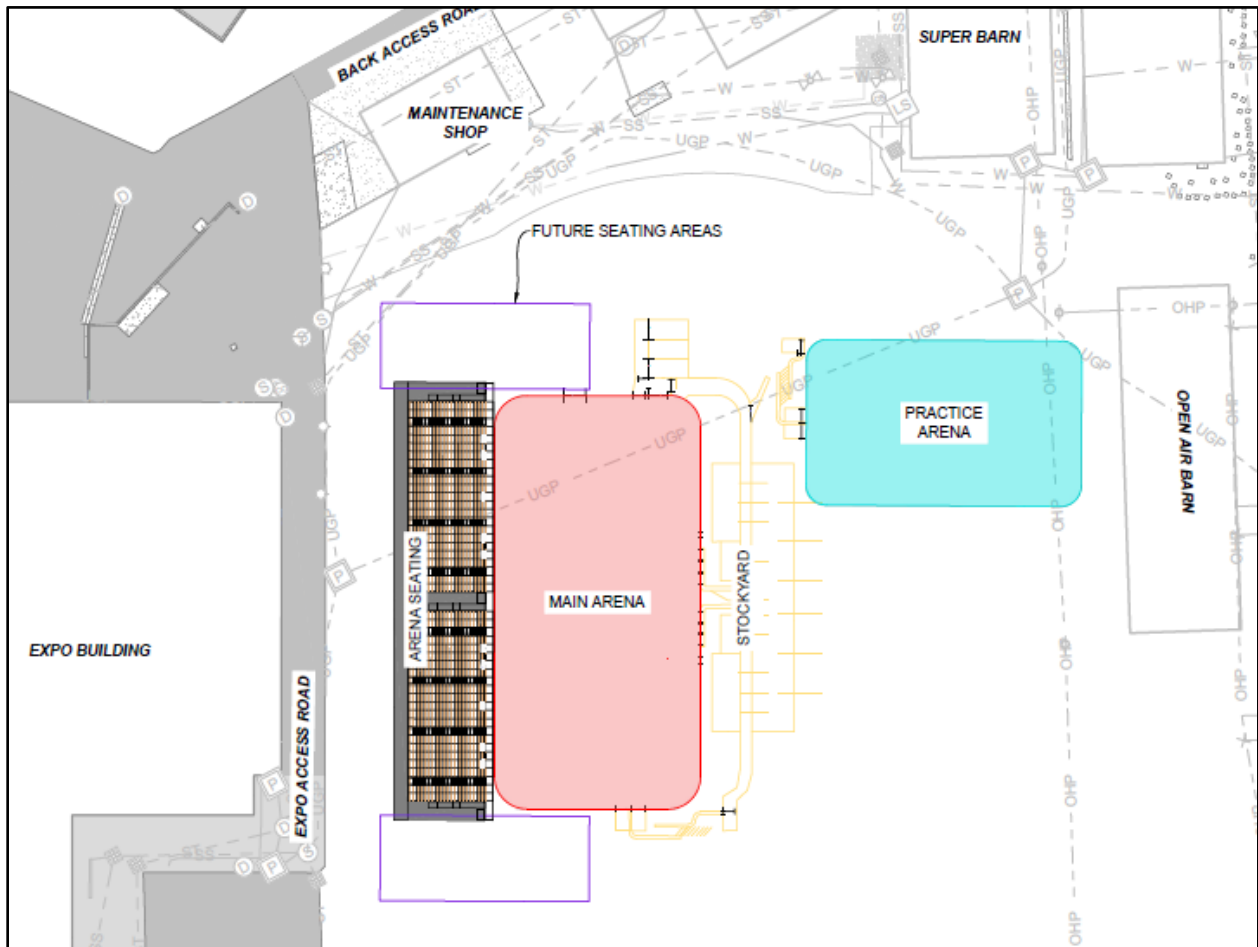
Discussion

Attachments

Metra Outdoor Arena Bleachers

REQUEST FOR PROPOSALS

OUTDOOR ARENA SEATING



METRAPARK OUTDOOR ARENA
Yellowstone County, MT

I. INTRODUCTION

Yellowstone County is seeking qualified Arena Seating contractors for the **MetraPark Outdoor Arena** in Yellowstone County, MT.

Yellowstone County, the Owner for this project, intends to enter into an Agreement with the selected contractor that will include Construction Services, with acceptance of a final total cost of the work proposal. All contractors that respond to this RFP will include all the information requested and a bid for construction services. Contract documents will use applicable EJCDC documents from the Montana Public Works Standard Specifications (MPWSS), 2021 Edition. Yellowstone County will make a selection based on the RFP responses and scoring outlined herein.

The contractor will be selected from the proposals submitted in response to this Request for Proposals (RFP) document along with discussions with former and present clients. When selected, the Contractor will function as part of a team composed of the Owner, Engineer, and others as determined by the Owner.

This RFP shall not commit the Owner to enter into any agreement, to pay any expenses incurred in preparation of any response to this request, or to procure or contract for any supplies, goods or services. The Owner reserves the right to accept or reject any and all responses received as a result of this RFP if it is in their best interest to do so.

This procurement is governed by the laws of the State of Montana and venue for all legal proceedings shall be the Thirteenth Judicial District, City of Billings, Yellowstone County.

By offering to perform services under this Procurement, all Proposers agree to be bound by the laws of the State of Montana, and including, but not limited to, applicable wage rates, payments, gross receipts taxes, building codes, equal opportunity employment practices, safety, etc.

The State of Montana makes reasonable accommodations for any known disability that may interfere with an applicant's ability to compete in the bidding and/or selection process. In order for the state to make such accommodations, applicants must make known any needed accommodation to the individual project managers or agency contacts listed in the contract documents. Persons using TDD may call the Montana Relay Service at 1- 800-253-4091.

II. PROJECT BACKGROUND AND DESCRIPTION

Introduction

The MetraPark Outdoor Arena will be located in Yellowstone County off of 1st Avenue N and Exposition Drive. This project will include seating for an outdoor arena, with the site civil design package provided by WWC Engineering. This project must be completed June 1, 2025 for full, beneficial use by MetraPark. We are expecting the Contractor to immediately be involved in meetings to discuss project costs, value engineering, schedule, lead time concerns, etc. following selection of a Contractor through this RFP process.

Project Location and Timeline

The project is located at 308 6th Ave N in Yellowstone County, MT.

The following is the intended timeline for the project:

Contractor Selection:

Advertising dates:	August 30, September 6, 13, & 20 in Yellowstone County News
Non-Mandatory Virtual Pre-Bid:	September 5 at 10 a.m. – Contact James Matteson via email for meeting invite
Geotechnical Addendum:	Planned for September 10
Proposals Due:	3:00 p.m. MST on September 30, 2024, at Yellowstone County Commissioners Office, 316 North 26 th Street 3 rd Floor, Rm #3101. Proposals will be opened and acknowledged on October 1, 2024, at the Commissioner’s regular meeting.

Construction Schedule:

Award Schedule:	Review and Recommendation to County Commissioners Planned to be completed within 1 week of receipt of Proposals and 1 week anticipated for contracting with selected Contractor – Estimated award of October 15
Construction Complete:	June 1, 2025

III. BASIS OF DESIGN

As stated above, the design and construction must adhere to all applicable codes. Life-cycle costs, maintainability, and quality will be high priorities in the decision-making process for how this project will be constructed, while maximizing performance, production, and seating capacity.

- Minimum Seating Capacity: 3,200
 - MetraPark would like to look at the option to expand to 8,000 seats in future. Contractor is to provide an outline of how their proposed bleachers may be expanded into the future seating areas including discussion of whether demolition of portions of this proposed project would be necessary to allow that expansion.
 - The Owner desires to have a future VIP seating area or areas of approximately 1200 seats in total which would include a platform that beverage services can be set up on (middle of or upper portion of seating) along with future concessions and bathroom services for these seating areas. Contractor is to provide an outline of whether their proposed bleachers can have this area constructed adjacent to the proposed bleachers and whether any demolition of the proposed bleachers will be necessary to complete future VIP seating.
 - The Owner desires a usable area under bleachers for future concessions and/or

bathroom facilities. This area is a high interest to have availability to utilize by the Owner and must be outlined by the Contractor in their proposal how that may be met. For Contractor's consideration the area for these facilities will be a minimum of 10 foot height, 25 foot depth, and 20 foot width with a minimum of 4 of these areas available.

- Seating Width: 18" with backrests on seats
- Plank Arrangement:
 - 16" rise X 33" tread - minimum slope; other specific rise and run distances may be provided by Contractor if equivalent or steeper than this slope
 - Minimum depth of tread 33"
 - Interlocking decking system required
- Side Railing: Minimum 42" above nose of seat
- Bleacher must comply with IBC 2021 and ICC 300
 - ADA access, quantity, and dispersal of seating to be included with bleacher set and addressed within submittal plans from Contractor
- Loading Requirements per code used by Contractor for bleacher design will be called out on plans submitted as part of proposal. Manufacturer is responsible for structural design of bleachers and foundations and plans must be stamped by Montana Professional Engineer licensed to practice in this area of work in the State.
 - Plans must include dimensioned layout of bleachers, sight lines of spectators in bleachers, dimensioned section(s) of bleachers, and all other data as identified herein.
 - Full design documents are required to bear the seal of a professional engineer licensed in the State of Montana for all structures, and reinforcing and foundation systems.
- Bleacher Maximum Length: 280'
 - Contractor may propose a shorter bleacher length but must address future seating requirements as part of shorter length.
- Contractor is to include cost for construction of pedestrian access as shown on the included plans and connection to termination point as called for on the plans.
- Bleacher package must include all work for bleachers, bleacher foundation, pedestrian pathway identified on plans and outlined herein, and surfacing beneath grandstand footprint either as required for bleacher construction or at a minimum landscape gravel as shown on plans.

IV. SCOPE OF CONSTRUCTION SERVICES

It is anticipated that the successful Contractor will enter into a contract with Yellowstone County for construction of the arena seating portion of the project, provided an agreeable total cost for the work on the project can be reached by all parties. The Owner reserves the right to reject the total proposed cost and bid the work out to qualified contractors.

The State of Montana Wage Rates incorporated in this RFP are provided for informational purposes only. The selected contractor will be required to comply (as a minimum allowable rate schedule) with those Rates adopted and effective at the time of signing the Agreement. All reporting, documentation, etc. shall remain as per State requirements.

V. SELECTION PROCEDURE

Under this RFP, the selection procedure is intended to evaluate the capabilities of interested contractors to provide services for this Project. The responses to this RFP will be evaluated by the selection committee in accordance with the criteria listed below. The contractor will be selected based on the overall merit of its proposal, references, and information obtained from any other reliable source.

The following constitute the criteria for the selection committee to evaluate proposals:

1. *Firm Information (10 points)*

a. Firm Background

Describe your firm's history. Identify your company organization chart and speak to the contractor's stability in the marketplace. Information identifying the contractor's strengths and weaknesses along with special capabilities that may be appropriate to this project will assist in the evaluation.

b. Firm Workload

Provide the status for current and anticipated work within the firm in terms of time and magnitude for the time anticipated for this project, as it relates to availability of key personnel and your firm. Especially in view of the time constraints during the construction phase identified for this project.

c. Firm Experience

Describe your firm's experience with projects of similar site, size, type, and complexity. Please provide a minimum of 5 projects. Also list at least 5 projects that have included accelerated schedules that you have met.

d. References

Provide detailed contact information for the Owner and Engineer for the last three (3) contracts completed by your firm as well as two (2) current projects underway.

e. Bonding/Financing

Include a letter from a bonding company certifying the bonding capacity of the proposer for your estimated cost of the project or more. Also include a letter from your Bank stating that you have the banking financing in place to complete a project of this size for payroll and all other financing you may need.

2. *The Project Team (5 points)*

- a. Provide a list of names and define the relationship of management individuals that you will commit to this Project. Include project management, field management, superintendent(s), estimators.

- b. For each team member:
 - i. Describe their responsibility on this Project.
 - ii. Describe their experience and how it is relevant to this project. Demonstrate the proposed key personnel's specific experience on projects of similar type, size and scope.
 - iii. Indicate the amount of time commitment available to this Project during the construction phase. What other projects are they assigned to and for what duration?
 - iv. Identify their length of employment with your firm and, if less than three years, prior firm(s).

3. *Project Management and Approach (40 points)*

- a. Company's ability and approach to:
 - i. Managing schedules
 - ii. Constructability
 - iii. Ability to incorporate future bleacher expansion
 - iv. Ability to incorporate bathrooms/concessions under bleachers
 - v. Scheduling
 - 1. Provide your approach to maintaining a schedule to ensuring that your activities for your scope of work and your subcontractors remain on schedule in our busy construction market.
 - vi. Project communication – Staff set up to use Revit models, Email, etc.
 - vii. Project safety – Provide your incident rate and EMR or loss ratio
 - viii. Provide your construction change order overhead and profit mark-ups
 - ix. Provide your construction change order overhead and profit mark up on subcontractors

4. *Proposed Fees and Costs (45 points)*

- a. Construction Estimate

Include all costs for your scope of work as described herein. Please list all assumptions, permits, etc. A lump sum number will not be accepted. Your estimate should be broken down, at a minimum, into mobilization, taxes, bonds, and insurance, bleachers, foundation, and surfacing. Your approach to this estimate is very important. It will demonstrate your ability to prepare an estimate, willingness to show all aspects of your estimate, and ability to incorporate costs to elements not shown on the plans but required by code.

Estimates are not required to be in a specific format. Use a format that you are comfortable using.

This information will be evaluated to determine reasonableness and evaluate potential performance risks. In this context, reasonableness may be determined by comparing offered prices with the initial budget study or other critical factors. This determination will be at the sole discretion of the committee and the County. The County reserves the right to cancel the

RFP and re-solicit via another mechanism should a fair and reasonable price not be achieved or reasonableness of price cannot be determined.

VI. SUBMITTAL OF INFORMATION

Four (4) written responses and a PDF e-mail to this RFP must be **received** at:

Yellowstone County Commissioners Office
316 N 26th Street, Room 301
Billings, MT 59101
jmatteson@yellowstonecountymt.gov

By September 30, 2024; 5:00 p.m. MST.

All questions and contacts regarding this RFP must be submitted **IN WRITING** to:

James Matteson
jmatteson@yellowstonecountymt.gov
406-256-2717

VII. INSTRUCTIONS TO PROPOSERS

Proposals must:

1. Follow the format outlined in the Selection Procedure, above.
2. Be signed by an officer or principal of your firm.

VIII. ATTACHMENTS

The following exhibits are incorporated in this RFP:

Appendix A: Montana State Prevailing Wage Rates – Building Construction (2024); however, the rates effective at the time of issuance of the Agreement shall apply)

Appendix B: Geotechnical Information – Preliminary geotechnical information is included from previous boreholes in the area of the project. Please be aware, the boreholes from previous projects may not be representative of current ground conditions due to changes in groundwater conditions and/or fill/excavation that may have occurred within the area. The planned boreholes to be completed and provided to Contractor are also shown on the exhibit within this appendix.

Appendix C: Plan sheets of proposed bleacher footprint and associated improvements.

END OF RFP

**APPENDIX A: MONTANA PREVAILING WAGE RATES FOR
BUILDING CONSTRUCTION SERVICES 2024**

MONTANA
PREVAILING WAGE RATES FOR BUILDING CONSTRUCTION SERVICES 2024

Effective: Effective January 13, 2024

*Greg Gianforte, Governor
State of Montana*

*Sarah Swanson, Commissioner
Department of Labor & Industry*

To obtain copies of prevailing wage rate schedules, or for information relating to public works projects and payment of prevailing wage rates, visit ERD at erd.dli.mt.gov/labor-standards or contact:

Employment Standards Division
Montana Department of Labor and Industry
P. O. Box 8011
Helena, MT 59601
Phone 406-444-6543

The department welcomes questions, comments, and suggestions from the public. In addition, we'll do our best to provide information in an accessible format, upon request, in compliance with the Americans with Disabilities Act.

MONTANA PREVAILING WAGE REQUIREMENTS

The Commissioner of the Department of Labor and Industry, in accordance with Sections 18-2-401 and 18-2-402 of the Montana Code Annotated (MCA), has determined the standard prevailing rate of wages for the occupations listed in this publication.

The wages specified herein control the prevailing rate of wages for the purposes of Section 18-2-401, et seq., MCA. It is required each employer pay (as a minimum) the rate of wages, including fringe benefits, travel allowance, zone pay and per diem applicable to the district in which the work is being performed as provided in the attached wage determinations.

All Montana Prevailing Wage Rates are available on the internet at <https://erd.dli.mt.gov/labor-standards/state-prevailing-wage-rates> or by contacting the department at (406) 444-6543.

In addition, this publication provides general information concerning compliance with Montana's Prevailing Wage Law and the payment of prevailing wages. For detailed compliance information relating to public works contracts and payment of prevailing wage rates, please consult the regulations on the internet at erd.dli.mt.gov/labor-standards or contact the department at (406) 444-6543.

SARAH SWANSON
Commissioner
Department of Labor and Industry
State of Montana

TABLE OF CONTENTS

MONTANA PREVAILING WAGE REQUIREMENTS:

A. Date of Publication	3
B. Definition of Building Construction	3
C. Definition of Public Works Contract	3
D. Prevailing Wage Schedule	3
E. Rates to Use for Projects	3
F. Wage Rate Adjustments for Multiyear Contracts	3
G. Fringe Benefits	4
H. Prevailing Wage Districts	4
I. Dispatch City	5
J. Zone Pay	5
K. Computing Travel Benefits	5
L. Per Diem	5
M. Apprentices	5
N. Posting Notice of Prevailing Wages	5
O. Employment Preference	5
P. Projects of a Mixed Nature	6
Q. Occupations Definitions Website	6
R. Welder Rates	6
S. Foreman Rates	6

WAGE RATES:

BOILERMAKERS	7
BRICK, BLOCK, AND STONE MASONS	7
CARPENTERS	7
CARPET INTALLERS	7
CEMENT MASONS AND CONCRETE FINISHERS	8
CONSTRUCTION EQUIPMENT OPERATORS	
OPERATORS GROUP 1	8
OPERATORS GROUP 2	9
OPERATORS GROUP 3	9
OPERATORS GROUP 4	10
OPERATORS GROUP 5	10
OPERATORS GROUP 6	10
OPERATORS GROUP 7	11
CONSTRUCTION LABORERS	
LABORERS GROUP 1	11
LABORERS GROUP 2	11
LABORERS GROUP 3	12
LABORERS GROUP 4	12
DRYWALL APPLICATORS	12
ELECTRICIANS: INCLUDING BUILDING AUTOMATION CONTROL	13
ELEVATOR CONSTRUCTORS	13
FLOOR LAYERS	14
GLAZIERS	14
HEATING AND AIR CONDITIONING	14
INSULATION WORKERS - MECHANICAL (HEAT AND FROST)	14
IRONWORKERS - REINFORCING IRON AND REBAR WORKERS	15
IRONWORKERS - STRUCTURAL IRON AND REBAR WORKERS	15
MILLWRIGHTS	15
PAINTERS: INCLUDING PAPERHANGERS	15
PILE BUCKS	16
PILOT CAR DRIVERS	
PLASTERERS	16
PLUMBERS, PIPEFITTERS, AND STEAMFITTERS	17
ROOFERS	18
SHEET METAL WORKERS	18
SOLAR PHOTOVOLTAIC INSTALLERS	19
SPRINKLER FITTERS	19
TAPERS	20
TELECOMMUNICATIONS EQUIPMENT INSTALLERS	20
TERRAZZO WORKERS AND FINISHERS	20
TILE AND STONE SETTERS	20
TRUCK DRIVERS	21

A. Date of Publication Effective January 13, 2024

B. Definition of Building Construction

For the purposes of Prevailing Wage, the Commissioner of Labor and Industry has determined that building construction occupations are defined to be those performed by a person engaged in a recognized trade or craft, or any skilled, semi-skilled, or unskilled manual labor related to the construction, alteration, or repair of a public building or facility, and does not include engineering, superintendence, management, office or clerical work.

The Administrative Rules of Montana (ARM), 24.17.501(2) – 2(a), states *“Building construction projects generally are the constructions of sheltered enclosures with walk-in access for housing persons, machinery, equipment, or supplies. It includes all construction of such structures, incidental installation of utilities and equipment, both above and below grade level, as well as incidental grading, utilities and paving.”*

Examples of building construction include, but are not limited to, alterations and additions to buildings, apartment buildings (5 stories and above), arenas (closed), auditoriums, automobile parking garages, banks and financial buildings, barracks, churches, city halls, civic centers, commercial buildings, court houses, detention facilities, dormitories, farm buildings, fire stations, hospitals, hotels, industrial buildings, institutional buildings, libraries, mausoleums, motels, museums, nursing and convalescent facilities, office buildings, out-patient clinics, passenger and freight terminal buildings, police stations, post offices, power plants, prefabricated buildings, remodeling buildings, renovating buildings, repairing buildings, restaurants, schools, service stations, shopping centers, stores, subway stations, theaters, warehouses, water and sewage treatment plants (buildings only), etc.”

C. Definition of Public Works Contract

Section 18-2-401(11)(a), MCA defines “public works contract” as *“...a contract for construction services let by the state, county, municipality, school district, or political subdivision or for nonconstruction services let by the state, county, municipality, or political subdivision in which the total cost of the contract is in excess of \$25,000...”*.

D. Prevailing Wage Schedule

This publication covers only Building Construction occupations and rates. These rates will remain in effect until superseded by a more current publication. Current prevailing wage rate schedules for Heavy Construction, Highway Construction, and Nonconstruction Services occupations can be found on the internet at <https://erd.dli.mt.gov/labor-standards/state-prevailing-wage-rates/> or by contacting the department at (406) 444-6543.

E. Rates to Use for Projects

ARM, 24.17.127(1)(c), states *“The wage rates applicable to a particular public works project are those in effect at the time the bid specifications are advertised.”*

F. Wage Rate Adjustments for Multiyear Contracts

Section 18-2-417, MCA states:

“(1) Any public works contract that by the terms of the original contract calls for more than 30 months to fully perform must include a provision to adjust, as provided in subsection (2), the standard prevailing rate of wages to be paid to the workers performing the contract.

(2) The standard prevailing rate of wages paid to workers under a contract subject to this section must be adjusted 12 months after the date of the award of the public works contract. The amount of the adjustment must be a 3% increase. The adjustment must be made and applied every 12 months for the term of the contract.

(3) Any increase in the standard rate of prevailing wages for workers under this section is the sole responsibility of the contractor and any subcontractors and not the contracting agency.”

G. Fringe Benefits

Section 18-2-412, MCA states:

“(1) To fulfill the obligation...a contractor or subcontractor may:

(a) pay the amount of fringe benefits and the basic hourly rate of pay that is part of the standard prevailing rate of wages directly to the worker or employee in cash;

(b) make an irrevocable contribution to a trustee or a third person pursuant to a fringe benefit fund, plan, or program that meets the requirements of the Employee Retirement Income Security Act of 1974 or that is a bona fide program approved by the U. S. department of labor; or

(c) make payments using any combination of methods set forth in subsections (1)(a) and (1)(b) so that the aggregate of payments and contributions is not less than the standard prevailing rate of wages, including fringe benefits and travel allowances, applicable to the district for the particular type of work being performed.

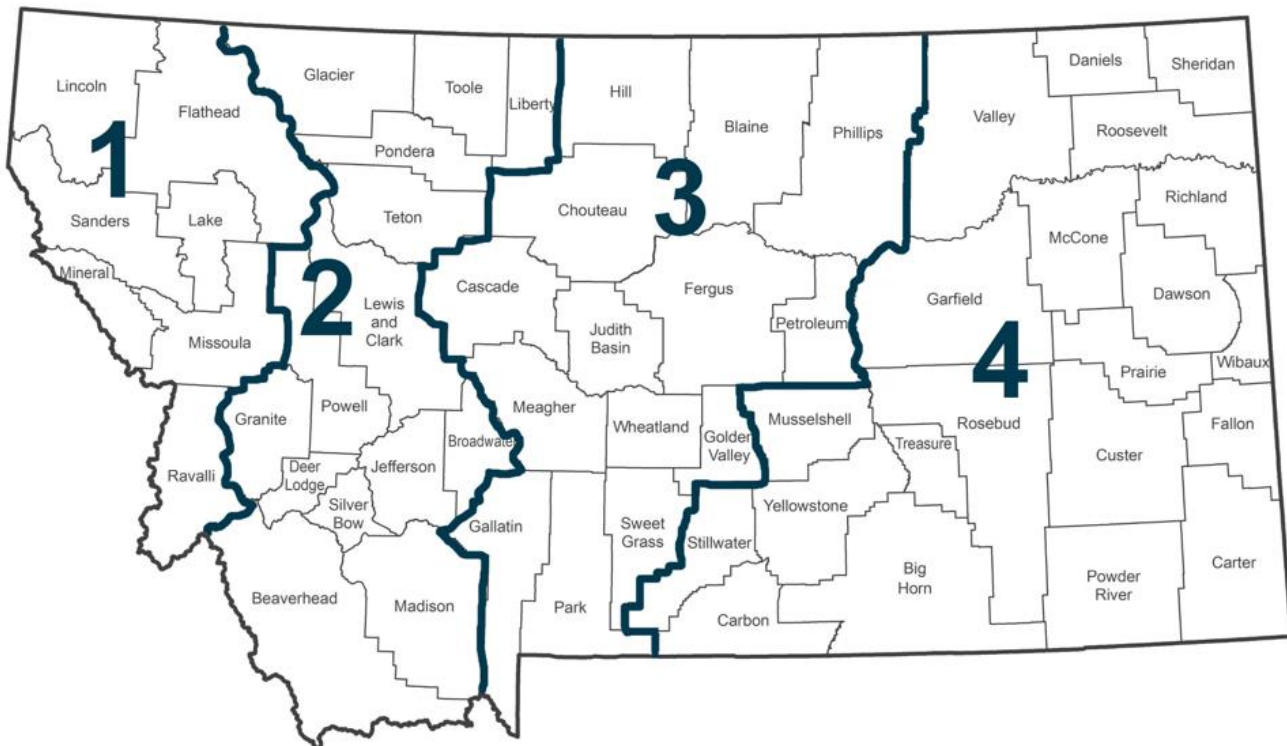
(2) The fringe benefit fund, plan, or program described in subsection (1)(b) must provide benefits to workers or employees for health care, pensions on retirement or death, life insurance, disability and sickness insurance, or bona fide programs that meet the requirements of the Employee Retirement Income Security Act of 1974 or that are approved by the U. S. department of labor.”

Fringe benefits are paid for all hours worked (straight time and overtime hours). However, fringe benefits are not to be considered a part of the hourly rate of pay for calculating overtime, unless there is a collectively bargained agreement in effect that specifies otherwise.

H. Prevailing Wage Districts

Montana counties are aggregated into 4 districts for the purpose of prevailing wage. The prevailing wage districts are composed of the following counties:

Montana Prevailing Wage Districts



I. Dispatch City

ARM, 24.17.103(11), defines dispatch city as “...the courthouse in the city from the following list which is closest to the center of the job: Billings, Bozeman, Butte, Great Falls, Helena, Kalispell, Miles City, Missoula and Sidney.” A dispatch city shall be considered the point of origin only for jobs within the counties identified in that district (as shown below):

District 1 – Kalispell and Missoula: includes Flathead, Lake, Lincoln, Mineral, Missoula, Ravalli, and Sanders;

District 2 – Butte and Helena: includes Beaverhead, Broadwater, Deer Lodge, Glacier, Granite, Jefferson, Lewis and Clark, Liberty, Madison, Pondera, Powell, Silver Bow, Teton, and Toole;

District 3 – Bozeman and Great Falls: includes Blaine, Cascade, Chouteau, Fergus, Gallatin, Golden Valley, Hill, Judith Basin, Meagher, Park, Petroleum, Phillips, Sweet Grass, and Wheatland;

District 4 – Billings, Miles City and Sidney: includes Big Horn, Carbon, Carter, Custer, Daniels, Dawson, Fallon, Garfield, McCone, Musselshell, Powder River, Prairie, Richland, Roosevelt, Rosebud, Sheridan, Stillwater, Treasure, Valley, Wibaux, and Yellowstone.

J. Zone Pay

Zone pay is not travel pay. ARM, 24.17.103(24), defines zone pay as “...an amount added to the base pay; the combined sum then becomes the new base wage rate to be paid for all hours worked on the project. Zone pay must be determined by measuring the road miles one way over the shortest practical maintained route from the dispatch city to the center of the job.” See section I above for a list of dispatch cities.

K. Computing Travel Benefits

ARM, 24.17.103(22), states “ ‘Travel pay,’ also referred to as ‘travel allowance,’ is and must be paid for travel both to and from the job site, except those with special provisions listed under the classification. The rate is determined by measuring the road miles one direction over the shortest practical maintained route from the dispatch city or the employee’s home, whichever is closer, to the center of the job.” See section I above for a list of dispatch cities.

L. Per Diem

ARM, 24.17.103(19), states “ ‘Per diem’ typically covers costs associated with board and lodging expenses. Per diem is paid when an employee is required to work at a location outside the daily commuting distance and is required to stay at that location overnight or longer.”

M. Apprentices

Wage rates for apprentices registered in approved federal or state apprenticeship programs are contained in those programs. Additionally, Section 18-2-416(2), MCA states “...The full amount of any applicable fringe benefits must be paid to the apprentice while the apprentice is working on the public works contract.” Apprentices not registered in approved federal or state apprenticeship programs will be paid the appropriate journey level prevailing wage rate when working on a public works contract.

N. Posting Notice of Prevailing Wages

Section 18-2-406, MCA provides that contractors, subcontractors and employers who are “...performing work or providing construction services under public works contracts, as provided in this part, shall post in a prominent and accessible site on the project or staging area, not later than the first day of work and continuing for the entire duration of the project, a legible statement of all wages and fringe benefits to be paid to the employees.”

O. Employment Preference

Sections 18-2-403 and 18-2-409, MCA requires contractors to give preference to the employment of bona fide Montana residents in the performance of work on public works contracts.

P. Projects of a Mixed Nature

Section 18-2-408, MCA states:

“(1) The contracting agency shall determine, based on the preponderance of labor hours to be worked, whether the public works construction services project is classified as a highway construction project, a heavy construction project, or a building construction project.

(2) Once the project has been classified, employees in each trade classification who are working on that project must be paid at the rate for that project classification”

Q. Occupations Definitions

You can find definitions for these occupations on the following Bureau of Labor Statistics website:

http://www.bls.gov/oes/current/oes_stru.htm

R. Welder Rates

Welders receive the rate prescribed for the craft performing an operation to which welding is incidental.

S. Foreman Rates

Rates are no longer set for foremen. However, if a foreman performs journey level work, the foreman must be paid at least the journey level rate.

WAGE RATES

BOILERMAKERS

No Rate Established

Duties Include:

Construct, assemble, maintain, and repair stationary steam boilers, boiler house auxiliaries, process vessels, and pressure vessels.

[↑ Back to Table of Contents](#)

BRICK, BLOCK, AND STONE MASONS

	Wage	Benefit
District 1	\$33.11	\$17.39
District 2	\$33.11	\$17.39
District 3	\$33.11	\$17.39
District 4	\$33.11	\$17.39

Travel:

All Districts

0-70 mi. free zone
>70-90 mi. \$60.00/day
>90 mi. \$80.00/day

[↑ Back to Table of Contents](#)

CARPENTERS

	Wage	Benefit
District 1	\$30.06	\$11.48
District 2	\$27.50	\$14.07
District 3	\$30.78	\$11.28
District 4	\$31.39	\$11.74

Zone Pay:

All Districts

0-30 mi. free zone
>30-60 mi. base pay + \$4.00/hr.
>60 mi. base pay + \$6.00/hr.

Duties Include:

Install roll and batt insulation, and hardwood floors.

[↑ Back to Table of Contents](#)

CARPET INSTALLERS

No Rate Established

Duties Include:

Lay and install carpet from rolls or blocks on floors. Install padding and trim flooring materials.

[↑ Back to Table of Contents](#)

CEMENT MASONS AND CONCRETE FINISHERS

	Wage	Benefit
District 1	\$30.55	\$6.74
District 2	\$29.45	\$5.87
District 3	\$30.75	\$6.51
District 4	\$30.00	\$7.40

Duties Include:

Smooth and finish surfaces of poured concrete, such as floors, walks, sidewalks, or curbs. Align forms for sidewalks, curbs, or gutters.

[↑ Back to Table of Contents](#)

Travel and Per Diem:

All Districts

No travel or per diem established.

CONSTRUCTION EQUIPMENT OPERATORS GROUP 1

	Wage	Benefit
District 1	\$31.51	\$16.68
District 2	\$30.61	\$16.68
District 3	\$30.86	\$16.68
District 4	\$30.86	\$16.68

This group includes but is not limited to:

Air Compressor; Auto Fine Grader; Belt Finishing; Boring Machine (Small); Cement Silo; Crane, A-Frame Truck Crane; Crusher Conveyor; DW-10, 15, and 20 Tractor Roller; Farm Tractor; Forklift; Form Grader; Front-End Loader, under 1 cu. yd; Oiler, Herman Nelson Heater; Mucking Machine; Oiler, All Except Cranes/Shovels; Pumpman.

[↑ Back to Table of Contents](#)

Travel Pay

District 1

0-45 mi. free zone
>45-85 mi. \$60.00/day
>85 mi. \$90.00/day

Zone Pay

District 2

0-30 mi. free zone
>30-60 mi. base pay + \$3.50/hr.
>60 mi. base pay + \$5.50/hr.

Districts 3 and 4

0-30 mi. free zone
>30-60 mi. base pay + \$3.05/hr.
>60 mi. base pay + \$4.85/hr.

CONSTRUCTION EQUIPMENT OPERATORS GROUP 2

	Wage	Benefit
District 1	\$27.85	\$ 7.57
District 2	\$30.60	\$11.06
District 3	\$29.60	\$10.03
District 4	\$31.58	\$11.20

This group includes but is not limited to:

Air Doctor; Backhoe\Excavator\Shovel, up to and incl. 3 cu. yds; Bit Grinder; Bituminous Paving Travel Plant; Boring Machine, Large; Broom, Self-Propelled; Concrete Travel Batcher; Concrete Float & Spreader; Concrete Bucket Dispatcher; Concrete Finish Machine; Concrete Conveyor; Distributor; Dozer, Rubber-Tired, Push, & Side Boom; Elevating Grader\Gradall; Field Equipment Serviceman; Front-End Loader, 1 cu. yd up to and incl. 5 cu. yds; Grade Setter; Heavy Duty Drills, All Types; Hoist\Tugger, All; Hydralift Forklifts & Similar; Industrial Locomotive; Motor Patrol (except finish); Mountain Skidder; Oiler, Cranes\Shovels; Pavement Breaker, EMSCO; Power Saw, Self-Propelled; Pugmill; Pumpcrete\Grout Machine; Punch Truck; Roller, other than Asphalt; Roller, Sheepsfoot (Self-Propelled); Roller, 25 tons and over; Ross Carrier; Rotomill, under 6 ft; Trenching Machine; Washing /Screening Plant.

[↑ Back to Table of Contents](#)

Travel Pay

District 1

0-45 mi. free zone
>45-85 mi. \$60.00/day
>85 mi. \$90.00/day

Zone Pay

District 2

0-30 mi. free zone
>30-60 mi. base pay + \$3.50/hr.
>60 mi. base pay + \$5.50/hr.

Districts 3 and 4

0-30 mi. free zone
>30-60 mi. base pay + \$3.05/hr.
>60 mi. base pay + \$4.85/hr.

CONSTRUCTION EQUIPMENT OPERATORS GROUP 3

	Wage	Benefit
District 1	\$30.07	\$12.82
District 2	\$32.83	\$16.68
District 3	\$32.31	\$10.70
District 4	\$29.36	\$11.27

This group includes but is not limited to:

Asphalt Paving Machine; Asphalt Screed; Backhoe\Excavator\Shovel, over 3 cu. yds; Cableway Highline; Concrete Batch Plant; Concrete Curing Machine; Concrete Pump; Cranes, Creter; Cranes, Electric Overhead; Cranes, 24 tons and under; Curb Machine\Slip Form Paver; Finish Dozer; Front-End Loader, over 5 cu. yds; Mechanic\Welder; Pioneer Dozer; Roller Asphalt (Breakdown & Finish); Rotomill, over 6 ft; Scraper, Single, Twin, or Pulling Belly-Dump; YO-YO Cat Haul Truck, Articulating Trucks, Vac Truck.

[↑ Back to Table of Contents](#)

Travel Pay

District 1

0-45 mi. free zone
>45-85 mi. \$60.00/day
>85 mi. \$90.00/day

Zone Pay

Districts 2 - 4

0-30 mi. free zone
>30-60 mi. base pay + \$3.50/hr.
>60 mi. base pay + \$5.50/hr.

CONSTRUCTION EQUIPMENT OPERATORS GROUP 4

	Wage	Benefit
District 1	\$34.05	\$16.68
District 2	\$29.05	\$12.85
District 3	\$30.90	\$13.50
District 4	\$33.92	\$16.68

This group includes but is not limited to:

Asphalt\Hot Plant Operator; Cranes, 25 tons up to and incl. 44 tons; Crusher Operator; Finish Motor Patrol; Finish Scraper.

[↑ Back to Table of Contents](#)

Travel Pay

District 1

0-45 mi. free zone
>45-85 mi. \$60.00/day
>85 mi. \$90.00/day

Zone Pay

Districts 2 - 4

0-30 mi. free zone
>30-60 mi. base pay + \$3.50/hr.
>60 mi. base pay + \$5.50/hr.

CONSTRUCTION EQUIPMENT OPERATORS GROUP 5

	Wage	Benefit
District 1	\$35.05	\$16.68
District 2	\$30.78	\$15.32
District 3	\$29.05	\$15.38
District 4	\$35.02	\$16.68

This group includes but is not limited to:

Cranes, 45 tons up to and incl. 74 tons.

[↑ Back to Table of Contents](#)

Travel Pay

District 1

0-45 mi. free zone
>45-85 mi. \$60.00/day
>85 mi. \$90.00/day

Zone Pay

Districts 2 - 4

0-30 mi. free zone
>30-60 mi. base pay + \$3.50/hr.
>60 mi. base pay + \$5.50/hr.

CONSTRUCTION EQUIPMENT OPERATORS GROUP 6

	Wage	Benefit
District 1	\$36.11	\$16.68
District 2	\$36.11	\$16.68
District 3	\$36.11	\$16.68
District 4	\$36.11	\$16.86

This group includes but is not limited to:

Cranes, 75 tons up to and incl. 149 tons; Cranes, Whirley (All).

[↑ Back to Table of Contents](#)

Zone Pay:

All Districts

0-30 mi. free zone
>30-60 mi. base pay + \$3.50/hr.
>60 mi. base pay + \$5.50/hr.

CONSTRUCTION EQUIPMENT OPERATORS GROUP 7

	Wage	Benefit
District 1	\$37.21	\$16.68
District 2	\$37.21	\$16.68
District 3	\$37.21	\$16.68
District 4	\$37.21	\$16.68

This group includes but is not limited to:

Cranes, 150 tons up to and incl. 250 tons; Cranes, over 250 tons—add \$1.00 for every 100 tons over 250 tons; Crane, Tower (All); Crane Stiff-Leg or Derrick; Helicopter Hoist.

[↑ Back to Table of Contents](#)

Zone Pay:

All Districts

0-30 mi. free zone

>30-60 mi. base pay + \$3.50/hr.

>60 mi. base pay + \$5.50/hr.

CONSTRUCTION LABORERS GROUP 1/FLAG PERSON FOR TRAFFIC CONTROL

	Wage	Benefit
District 1	\$24.55	\$12.00
District 2	\$24.55	\$12.00
District 3	\$24.55	\$12.00
District 4	\$24.55	\$12.00

[↑ Back to Table of Contents](#)

Zone Pay:

All Districts

0-15 mi. free zone

>15-30 mi. base pay + \$0.65/hr.

>30-50 mi. base pay + \$0.85/hr.

>50 mi. base pay + \$1.25/hr.

CONSTRUCTION LABORERS GROUP 2

	Wage	Benefit
District 1	\$26.23	\$12.00
District 2	\$27.25	\$12.00
District 3	\$26.29	\$ 8.91
District 4	\$27.25	\$12.00

This group includes but is not limited to:

General Labor; Asbestos Removal; Burning Bar; Bucket Man; Carpenter Tender; Caisson Worker; Cement Mason Tender; Cement Handler (dry); Chuck Tender; Choker Setter; Concrete Worker; Curb Machine-lay Down; Crusher and Batch Worker; Heater Tender; Fence Erector; Landscape Laborer; Landscaper; Lawn Sprinkler Installer; Pipe Wrapper; Pot Tender; Powderman Tender; Rail and Truck Loaders and Unloaders; Riprapper; Sign Erection; Guardrail and Jersey Rail; Spike Driver; Stake Jumper; Signalman; Tail Hoseman; Tool Checker and Houseman and Traffic Control Worker.

[↑ Back to Table of Contents](#)

Zone Pay:

All Districts

0-15 mi. free zone

>15-30 mi. base pay + \$0.65/hr.

>30-50 mi. base pay + \$0.85/hr.

>50 mi. base pay + \$1.25/hr.

CONSTRUCTION LABORERS GROUP 3

	Wage	Benefit
District 1	\$25.55	\$12.00
District 2	\$25.55	\$12.00
District 3	\$25.55	\$12.00
District 4	\$25.55	\$12.00

This group includes but is not limited to:

Concrete Vibrator; Dumpman (Grademan); Equipment Handler; Geotextile and Liners; High-Pressure Nozzleman; Jackhammer (Pavement Breaker) Non-Riding Rollers; Pipelayer; Posthole Digger (Power); Power Driven Wheelbarrow; Rigger; Sandblaster; Sod Cutter-Power and Tamper.

[↑ Back to Table of Contents](#)

Zone Pay:

All Districts

0-15 mi. free zone
>15-30 mi. base pay + \$0.65/hr.
>30-50 mi. base pay + \$0.85/hr.
>50 mi. base pay + \$1.25/hr.

CONSTRUCTION LABORERS GROUP 4

	Wage	Benefit
District 1	\$25.60	\$12.00
District 2	\$26.27	\$12.00
District 3	\$26.41	\$12.00
District 4	\$25.60	\$12.00

This group includes but is not limited to:

Hod Carrier***; Water Well Laborer; Blaster; Wagon Driller; Asphalt Raker; Cutting Torch; Grade Setter; High-Scaler; Power Saws (Faller & Concrete) Powderman; Rock & Core Drill; Track or Truck Mounted Wagon Drill and Welder incl. Air Arc.

[↑ Back to Table of Contents](#)

Zone Pay:

All Districts

0-15 mi. free zone
>15-30 mi. base pay + \$0.65/hr.
>30-50 mi. base pay + \$0.85/hr.
>50 mi. base pay + \$1.25/hr.

***Hod Carriers will receive the same amount of travel and/or subsistence pay as bricklayers when requested to travel.

DRYWALL APPLICATORS

	Wage	Benefit
District 1	\$31.24	\$14.07
District 2	\$31.24	\$14.07
District 3	\$31.24	\$14.07
District 4	\$31.24	\$14.07

Duties Include:

Drywall and ceiling tile installation.

[↑ Back to Table of Contents](#)

Zone Pay:

All Districts

0-30 mi. free zone
>30-60 mi. base pay + \$4.00/hr.
>60 mi. base pay + \$6.00/hr.

ELECTRICIANS: INCLUDING BUILDING AUTOMATION CONTROL

	Wage	Benefit
District 1	\$34.15	\$15.38
District 2	\$33.90	\$17.75
District 3	\$34.43	\$16.40
District 4	\$38.86	\$16.73

Duties Include:

Electrical wiring; equipment and fixtures; street lights; electrical control systems. Installation and/or adjusting of building automation controls also during testing and balancing, commissioning and retro-commissioning.

Travel:

District 1

No mileage due when traveling in employer's vehicle.

The following travel allowance is applicable when traveling in employee's vehicle:

- 0-15 mi. free zone
- >15-45 mi. \$0.585/mi. in excess of the free zone.
- >45 mi. \$75.00/day

Districts 2 & 3

No mileage due when traveling in employer's vehicle.

The following travel allowance is applicable when traveling in employee's vehicle:

- 0-08 mi. free zone
- >08-50 mi. current federal mileage rate/mi. in excess of the free zone.
- >50 mi. \$71.57/day

District 4

No mileage due when traveling in employer's vehicle.

The following travel allowance is applicable when traveling in employee's vehicle:

- 0-18 mi. free zone
- >18-60 mi. federal mileage rate/mi.

Per Diem

District 4

>60 mi. \$80.00/day

Per Diem in Big Sky and West Yellowstone \$125/day.

[↑ Back to Table of Contents](#)

ELEVATOR CONSTRUCTORS

	Wage	Benefit
District 1	\$62.25	\$45.24
District 2	\$62.25	\$45.24
District 3	\$62.25	\$45.24
District 4	\$62.25	\$45.24

Travel:

All Districts

- 0-15 mi. free zone
- >15-25 mi. \$49.73/day
- >25-35 mi. \$99.45/day
- >35 mi. \$112.90/day

Special Provision:

.93/mile when added to amounts above if using employee vehicle.

[↑ Back to Table of Contents](#)

FLOOR LAYERS

No Rate Established

Apply blocks, strips, or sheets of shock-absorbing, sound-deadening, or decorative coverings to floors.

[↑ Back to Table of Contents](#)

GLAZIERS

	Wage	Benefit
District 1	\$24.78	\$4.33
District 2	\$23.28	\$5.66
District 3	\$23.75	\$4.41
District 4	\$22.97	\$4.37

[↑ Back to Table of Contents](#)

Travel and Per Diem:

All Districts

No travel or per diem established.

HEATING AND AIR CONDITIONING

	Wage	Benefit
District 1	\$33.00	\$20.73
District 2	\$33.00	\$20.73
District 3	\$33.00	\$20.73
District 4	\$33.30	\$20.73

Duties Include:

Testing and balancing, commissioning and retro-commissioning of all air-handling equipment and duct work.

All Districts

0-45 mi. free zone

>45 mi.

- \$0.25/mi. in employer vehicle.
- \$0.65/mi. in employee vehicle.

Per Diem:

All Districts

\$85/day

[↑ Back to Table of Contents](#)

INSULATION WORKERS - MECHANICAL (HEAT AND FROST)

	Wage	Benefit
District 1	\$40.56	\$21.99
District 2	\$40.56	\$21.99
District 3	\$40.56	\$21.99
District 4	\$37.34	\$21.99

Duties Include:

Insulate pipes, ductwork or other mechanical systems.

Travel:

0-30 mi. free zone

>30-40 mi. \$25.00/day

>40-50 mi. \$35.00/day

>50-60 mi. \$45.00/day

>60 mi. \$130.00/day plus

- \$0.56/mi. if transportation is not provided.
- \$0.20/mi. if in company vehicle.

[↑ Back to Table of Contents](#)

IRONWORKERS – REINFORCING IRON AND REBAR WORKERS

	Wage	Benefit
District 1	\$33.95	\$25.59
District 2	\$33.95	\$24.50
District 3	\$33.95	\$24.50
District 4	\$33.95	\$24.50

Travel:
All Districts
0-45 mi. free zone
>45-85 mi. \$100.00/day
>85 mi. \$150.00/day

Duties Include:

Structural steel erection; assemble prefabricated metal buildings; cut, bend, tie, and place rebar; energy producing windmill type towers; metal bleacher seating; handrail fabrication and ornamental steel.

[↑ Back to Table of Contents](#)

IRONWORKERS – STRUCTURAL IRON AND STEEL WORKERS

	Wage	Benefit
District 1	\$33.95	\$24.50
District 2	\$33.95	\$24.50
District 3	\$33.95	\$24.50
District 4	\$33.95	\$24.50

Travel:
All Districts
0-45 mi. free zone
>45-85 mi. \$100.00/day
>85 mi. \$150.00/day

Duties Include:

Structural steel erection; assemble prefabricated metal buildings; cut, bend, tie, and place rebar; energy producing windmill type towers; metal bleacher seating; handrail fabrication and ornamental steel.

[↑ Back to Table of Contents](#)

MILLWRIGHTS

	Wage	Benefit
District 1	\$40.49	\$18.84
District 2	\$40.49	\$18.84
District 3	\$40.49	\$18.84
District 4	\$40.49	\$18.84

Zone Pay:
All Districts
0-30 mi. free zone
>30-60 mi. base pay + \$4.00/hr.
>60 mi. base pay + \$6.00/hr.

[↑ Back to Table of Contents](#)

PAINTERS: INCLUDING PAPERHANGERS

	Wage	Benefit
District 1	\$30.00	\$12.81
District 2	\$21.28	\$12.81
District 3	\$25.55	\$12.81
District 4	\$30.30	\$12.81

Travel and Per Diem:
All Districts
No travel or per diem established.

[↑ Back to Table of Contents](#)

PILE BUCKS

	Wage	Benefit
District 1	\$34.50	\$14.07
District 2	\$34.50	\$14.07
District 3	\$34.50	\$14.07
District 4	\$34.50	\$14.07

Duties Include:

Set up crane; set up hammer; weld tips on piles; set leads; insure piles are driven straight with the use of level or plum bob. Give direction to crane operator as to speed and direction of swing. Cut piles to grade.

[↑ Back to Table of Contents](#)

Zone Pay:

All Districts

0-30 mi. free zone

>30-60 mi. base pay + \$4.00/hr.

>60 mi. base pay + \$6.00/hr.

PILOT CAR DRIVERS

No Rate Established

[↑ Back to Table of Contents](#)

PLASTERERS

No Rate Established

Duties Include:

All materials beyond the substrate, such as a moisture barrier, any type of drainage installation between the moisture barrier and insulation or EPS board, the attachment of the EPS board, installation of fiberglass mesh embedded in the base coat, any water-resistant coat that is applied on top of the insulation to serve as a weather barrier, and the application of the finish coat.

[↑ Back to Table of Contents](#)

PLUMBERS, PIPEFITTERS, AND STEAMFITTERS

	Wage	Benefit
District 1	\$37.63	\$16.26
District 2	\$37.90	\$16.45
District 3	\$37.90	\$16.45
District 4	\$36.71	\$20.31

Duties Include:

Assemble, install, alter, and repair pipe-lines or pipe systems that carry water, steam, air, other liquids or gases. Testing of piping systems, commissioning and retro-commissioning. Workers in this occupation may also install heating and cooling equipment and mechanical control systems.

Travel:

District 1

0-30 mi. free zone
>30-50 mi. \$35.00/day
>50-75 mi. \$45.00/day
>75 mi. \$100.00/day

Special Provision

If transportation is not provided, mileage at \$0.35/mi. for one trip out and one trip back is added to the amounts above. However, if the employee is traveling more than 75 miles/day, only subsistence at the rate of \$85.00/day is required.

Districts 2 & 3

0-45 mi. free zone
>45 mi.

- \$0.00/mi. in employer vehicle.
- \$0.65/mi. in employee vehicle.

Special Provision:

At the contractors' option, mileage for one trip out and one trip back per week may be paid plus subsistence at the rate of \$135.00/day.

District 4

0-70 free zone
>70 mi.

- On jobs when employees do not work consecutive days: \$0.55/mi. if employer doesn't provide transportation. Not to exceed two trips.
- On jobs when employees work any number of consecutive days: \$110.00/day.

[↑ Back to Table of Contents](#)

ROOFERS

	Wage	Benefit
District 1	\$31.47	\$13.26
District 2	\$31.47	\$13.26
District 3	\$29.83	\$ 9.20
District 4	\$24.42	\$ 9.06

Duties Include:

Metal roofing, covers roofs, walls and foundations with water proofing, insulation and vapor barriers in addition to metal flashings. Roofing includes shingles, low slope membranes, metal roofs, insulation, spray foam, coatings and vapor barriers. Wall coverings include metal panels, insulated metal panels and other waterproofing or rain screen systems. Foundation systems include waterproofing and insulation. Excludes prefabricated metal buildings.

Travel:

District 1

0-50 mi. free zone

>50 mi.

- \$0.00/mi. in employer vehicle.
- \$0.35/mi. in employee vehicle.

District 2 and 3

0-35 mi. free zone

>35 mi.

- \$0.00/mi. in employer vehicle.
- \$0.40/mi. in employee vehicle.

District 4

0-50 mi. free zone

>50 mi.

- \$0.00/mi. in employer vehicle.
- \$0.35/mi. in employee vehicle.

Per Diem:

District 1

\$84.00/day

District 2 and 3

Employer pays for room + \$30.00/day.

District 4

Employer pays for room + \$25.00/day.

[↑ Back to Table of Contents](#)

SHEET METAL WORKERS

	Wage	Benefit
District 1	\$33.00	\$20.73
District 2	\$33.00	\$20.73
District 3	\$33.00	\$20.73
District 4	\$33.00	\$20.73

Duties Include:

Testing and balancing, commissioning and retro-commissioning of all air-handling equipment and duct work. Manufacture, fabrication, assembling, installation, dismantling, and alteration of all HVAC systems, air conveyer systems, and exhaust systems. All lagging over insulation and all duct lining.

All Districts

0-45 mi. free zone

>45 mi.

- \$0.25/mi. in employer vehicle.
- \$0.65/mi. in employee vehicle.

Per Diem:

All Districts

\$85/day

[↑ Back to Table of Contents](#)

SOLAR PHOTOVOLTAIC INSTALLERS

	Wage	Benefit
District 1	\$32.75	\$17.75
District 2	\$32.75	\$17.75
District 3	\$33.90	\$16.40
District 4	\$33.70	\$16.40

Travel:

Districts 1, 2 and 3

No mileage due when traveling in employer's vehicle.

The following travel allowance is applicable when traveling in employee's vehicle:

- 0-08 mi. free zone
- >08-50 mi. federal mileage rate/mi. in excess of the free zone.
- >50 mi. \$60.57/day

District 4

No mileage due when traveling in employer's vehicle.

The following travel allowance is applicable when traveling in employee's vehicle:

- 0-18 mi. free zone
- >18-60 mi. federal mileage rate/mi.
- >60 mi. \$75.00/day

[↑ Back to Table of Contents](#)

SPRINKLER FITTERS

	Wage	Benefit
District 1	\$37.66	\$23.68
District 2	\$39.06	\$25.39
District 3	\$39.06	\$25.39
District 4	\$39.06	\$25.39

Duties Include:

Duties Include but not limited to any and all fire protection systems: Installation, dismantling, inspection, testing, maintenance, repairs, adjustments, and corrections of all fire protection and fire control systems, including both overhead and underground water mains, all piping, fire hydrants, standpipes, air lines, tanks, and pumps used in connection with sprinkler and alarm systems.

Travel

All Districts

The following travel allowance is applicable when traveling in employee's vehicle.

- 0-60 mi. free zone
- >60-80 mi. \$19.00/day
- >80-100 mi. \$29.00/day
- >100 mi. \$105.00/day + the IRS rate per mile and \$8.92 for every 15 miles traveled for one trip out and one trip back

No travel allowance required when in employer's vehicle except when staying the night.

[↑ Back to Table of Contents](#)

TAPERS

No Rate Established

[↑ Back to Table of Contents](#)

Travel and Per Diem:

All Districts

No travel or per diem established.

TELECOMMUNICATIONS EQUIPMENT INSTALLERS

	Wage	Benefit
District 1	\$32.36	\$9.73
District 2	\$23.33	\$7.03
District 3	\$24.17	\$8.12
District 4	\$23.93	\$2.32

Duties Include:

Install voice; sound; vision and data systems. This occupation includes burglar alarms, fire alarms, fiber optic systems, and video systems for security or entertainment

[↑ Back to Table of Contents](#)

Travel:

All Districts

The federal mileage rate/mi. in effect when travel occurs if using own vehicle.

Per Diem:

All Districts

Employer pays for meals and lodging up to \$75.00/day. When jobsite is located in Big Sky, West Yellowstone, and Gardiner, lodging and meals will be provided by the employer for all actual and reasonable expenses incurred.

TERRAZZO WORKERS AND FINISHERS

No Rate Established

Duties Include:

Finish work on hard tile, marble, and wood tile to floors, ceilings, and roof decks

[↑ Back to Table of Contents](#)

TILE AND STONE SETTERS

	Wage	Benefit
District 1	\$22.94	\$3.74
District 2	\$22.94	\$3.74
District 3	\$22.94	\$3.74
District 4	\$22.94	\$3.74

Duties Include:

Apply hard tile, stone, and comparable materials to walls, floors, ceilings, countertops, and roof decks.

[↑ Back to Table of Contents](#)

Travel and Per Diem

No travel or per diem established.

TRUCK DRIVERS

Pilot Car Driver **No Rate Established**

	Wage	Benefit
District 1	\$23.42	\$ 5.30
District 2	\$25.00	\$ 5.50
District 3	\$31.06	\$10.16
District 4	\$30.60	\$ 9.93

Truck drivers include but are not limited to:

Combination Truck & Concrete Mixer; Distributor Driver; Dry Batch Trucks; Dump Trucks & Similar Equipment; Flat Trucks; Lowboys, Four-Wheel Trailers, Float Semitrailer; Powder Truck Driver (Bulk Unloader Type); Servicemen; Service Truck Drivers, Fuel Truck Drivers, Tiremen; Trucks with Power Equipment; Truck Mechanic; Water Tank Drivers, Petroleum Product Drivers.

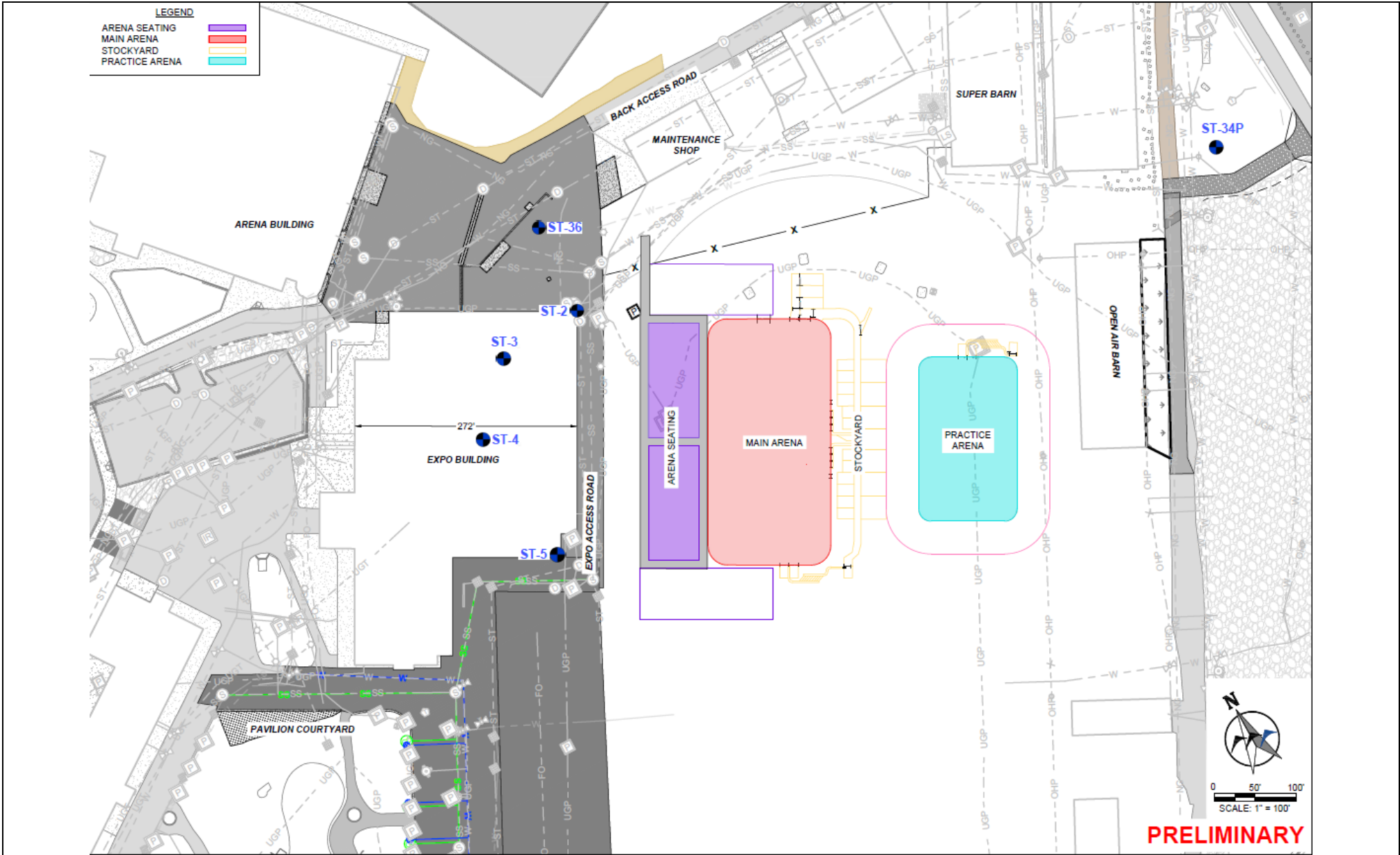
Zone Pay:

All Districts

No zone pay established.

[↑ Back to Table of Contents](#)

APPENDIX B: GEOTECHNICAL INFORMATION



EXISTING BORING LOCATION SKETCH
 New Grandstand
 Metra Park Facility
 Billings, MT

Drawn by: WWC/SK Geo Date: 8/2/2024

Proposal: P-24158

Scale: On Image

FIGURE

Sheet 2 of 2

2

LOG OF BORING

PROJECT: BHAX-94-122 GEOTECHNICAL EVALUATION Proposed Metra Park Buildings Billings, Montana	BORING: ST-2 LOCATION: See attached sketch.
---	---

DRILLER: W. Neff	METHOD: 3 1/4" HSA, Auto Hmr	DATE: 8/1/94	SCALE: 1" = 4'
------------------	------------------------------	--------------	----------------

Elev.	Depth	ASTM Symbol	Description of Materials (ASTM D 2488)	BPF	WL	qp	Tests or Notes
3101.8	0.0						
3100.9	0.9		FILL: 4' Bituminous over 6" Aggregate Base.				TW = thin-walled tube sample.
		CL	LEAN CLAY with SAND, medium plasticity, brown, moist, rather stiff to soft. (Alluvium)	11			
				TW			
				2			
3095.8	6.0			3			
		SC	CLAYEY SAND, fine-grained, low plasticity, brown, wet, soft. (Alluvium)				
3093.3	8.5			1			
		CL	LEAN CLAY, medium plasticity, brown, wet, very soft. (Alluvium)		▽		
3090.8	11.0			2			
		ML	SILT, nonplastic, gray, waterbearing, very loose. (Alluvium)				
3088.3	13.5			5			
		CL ML	SILTY CLAY, with a layer of Gravel at 13 1/2', gray, waterbearing, rather soft. (Alluvium)				
3084.3	17.5			27			
		GP	POORLY GRADED GRAVEL, fine- to coarse-grained, with SAND, brown, waterbearing, medium dense. (Alluvium)				
3081.3	20.5						
			END OF BORING				
			Water down 10.5' with 19' of hollow-stem auger in the ground. Water down 11.2' immediately after withdrawal of auger. Boring then backfilled.				

(See Report and Standard Plates for evaluation and descriptive terminology.)

LOG OF BORING

PROJECT: BHAX-94-122 GEOTECHNICAL EVALUATION Proposed Metra Park Buildings Billings, Montana				BORING: ST-3			
				LOCATION: See attached sketch.			
DRILLER: W. Neff		METHOD: 3 1/4" HSA, Auto Hmr		DATE: 8/1/94		SCALE: 1" = 4'	
Elev. 3101.8	Depth 0.0	ASTM Symbol	Description of Materials (ASTM D 2488)	BPF	WL	qp	Tests or Notes
		CL	2" of topsoil and root zone over SANDY LEAN CLAY, medium plasticity, brown, dry, stiff to soft. (Alluvium)	13 3			
3098.3	3.5	SM	SILTY SAND, fine-grained, with a trace of roots, non to slightly plastic, light brown, moist, very loose. (Alluvium)	3			
3093.3	8.5	SP	POORLY GRADED SAND, fine- to coarse-grained, with GRAVEL, light brown, waterbearing, loose. (Alluvium)	6			
3090.8	11.0	CL	LEAN CLAY with SAND, with a trace of organics, gray and dark gray, wet, very soft. (Alluvium)	1	▽		
				1			No sample returned.
3083.3	18.5	GP	POORLY GRADED GRAVEL, fine- to coarse-grained, with SAND, waterbearing, medium dense. (Alluvium)	11			
3081.3	20.5						No sample returned.
			END OF BORING				
			Water down 11.5' with 19' of hollow-stem auger in the ground. Water not observed to wet cave-in depth of 10.6' immediately after withdrawal of auger. Boring then backfilled.				

(See Report and Standard Plates for evaluation and descriptive terminology.)

LOG OF BORING

PROJECT: BHAX-94-122 GEOTECHNICAL EVALUATION Proposed Metra Park Buildings Billings, Montana	BORING: ST-4A LOCATION: Boring offset 12' N of shown location, see attached sketch.
---	---

DRILLER: W. Neff	METHOD: 3 1/4" HSA, Auto Hmr	DATE: 8/1/94	SCALE: 1" = 4'
------------------	------------------------------	--------------	----------------

Elev.	Depth	ASTM Symbol	Description of Materials (ASTM D 2488)	BPF	WL	qp	Tests or Notes
3102.5	0.0						
3100.5	2.0		FILL: 2" topsoil and root zone over Clayey Sand and Silty Sand, brown and dark brown, dry.	9			
3098.5	4.0	SC	CLAYEY SAND, fine- to medium-grained, with a trace of Gravel, low plasticity, brown, moist, medium. (Alluvium)	6	TW		
3096.5	6.0	CL	LEAN CLAY with SAND, medium plasticity, brown, wet, rather soft. (Alluvium)	5		2 1/4	
3094.0	8.5	CL	LEAN CLAY, with a trace of salts, medium plasticity, brown, wet, rather soft. (Alluvium)	4		1 1/4	
3091.5	11.0	ML	SANDY SILT, brown, wet. (Alluvium)				Penetration resistance not recorded at 9.5'.
3089.0	13.5	SP	POORLY GRADED SAND, fine- to medium-grained, with a trace of Gravel, brown, wet, medium dense. (Alluvium)	12			
3087.0	15.5	GP	POORLY GRADED GRAVEL, fine- to coarse-grained, with SAND, brown, waterbearing, medium dense. (Alluvium)	35			
END OF BORING							
Water down 11.2' with 14' of hollow-stem auger in the ground. Water not observed to wet cave-in depth of 10.6' immediately after withdrawal of auger. Boring then backfilled.							

(See Report and Standard Plates for evaluation and descriptive terminology.)

LOG OF BORING

PROJECT: BHAX-94-122 GEOTECHNICAL EVALUATION Proposed Metra Park Buildings Billings, Montana					BORING: ST-5		
					LOCATION: See attached sketch.		
DRILLER: W. Neff		METHOD: 3 1/4" HSA, Auto Hmr		DATE: 8/2/94		SCALE: 1" = 4'	
Elev.	Depth	ASTM Symbol	Description of Materials (ASTM D 2488)	BPF	WL	qp	Tests or Notes
3099.9	0.0						
3098.4	1.5	SC	2" of topsoil and root zone over CLAYEY SAND, with a trace of roots, medium plasticity, olive brown, moist, rather soft. (Alluvium)	7			
		CH	FAT CLAY, high plasticity, brown, wet, medium. (Alluvium)	6			
3095.9	4.0			TW			
		CL	SANDY LEAN CLAY, with a trace of salts, medium plasticity, brown, wet, rather soft. (Alluvium)	3			
3093.9	6.0			2			
		SC	CLAYEY SAND, fine-grained, low plasticity, brown, wet, soft. (Alluvium)	2			
3091.4	8.5			21	▽		
		GP	POORLY GRADED GRAVEL, fine- to coarse-grained, with SAND, brown, wet, medium dense to dense. (Alluvium)	22			
3084.4	15.5			58			
			END OF BORING				
			Water down 9.5' with 14' of hollow-stem auger in the ground. Water not observed to cave-in depth of 9.2' immediately after withdrawal of auger. Boring then backfilled.				

(See Report and Standard Plates for evaluation and descriptive terminology.)



2511 Holman Avenue
 P. O. Box 80190
 Billings, MT 59108-0190
 Phone: 406.652.3930
 Fax: 406.652.3944

LOG OF BORING

PROJECT: 23-4360G GEOTECHNICAL EVALUATION Metra Park Improvements Billings, Montana				BORING: ST-34P					
DRILLED BY: E. Hollibaugh				METHOD: CME 75HT, Automatic		DATE: 11/20/23		SCALE: 1" = 3'	
Elev.	Depth	Symbol	Description of Materials	BPF	WL MC	qp (tsf)	Remarks		
3099.7	0.0		FILL: Silty Clayey Sand, fine- to medium-grained, trace gravel, olive brown, moist to wet, loose.	7	11.2				
				5	12.7				
					17.6				
				10	21.0				
3093.7	6.0		SILTY GRAVEL with SAND and COBBLES, fine- to coarse-grained, trace Boulders, brown, moist to waterbearing, medium dense to very dense. (Alluvium)	66	1.9				
		GM		52	▽4.6				
				29	8.2				
3084.2	15.5		END OF BORING	44	7.5				
			Water observed at a depth of 10.2' with 14' of hollow-stem auger in the ground.						
			Boring completed as a piezometer.						
			Backfilled with sand to 3', bentonite to 2', cuttings to 1', concrete and manhole to ground surface.						

BORING BPF WL-MC QP ELEV ~ 4360.GPJ LAGNN06.GDT 11/15/24



2511 Holman Avenue
 P. O. Box 80190
 Billings, MT 59108-0190
 Phone: 406.652.3930
 Fax: 406.652.3944

LOG OF BORING

PROJECT: 23-4360G GEOTECHNICAL EVALUATION Metra Park Improvements Billings, Montana				BORING: ST-36					
DRILLED BY: E. Hollibaugh				METHOD: CME 75HT, Automatic		DATE: 11/20/23		SCALE: 1" = 3'	
Elev.	Depth	Symbol	Description of Materials	BPF	WL MC	qp (tsf)	Remarks		
3107.5	0.0								
3107.2	0.3		Asphalt: (3/4")						
3106.7	0.8		Base Course: Poorly Graded Gravel						
			FILL Silty Gravel with Sand, fine- to coarse-grained, brown, moist, medium dense.	17	6.5				
3105.5	2.0		FILL: Silty Gravel with Sand, fine- to coarse-grained, dark olive brown, moist, medium dense.	24	7.0				
3103.5	4.0		SILTY CLAYEY SAND with GRAVEL, slightly plastic, fine- to coarse-grained, olive brown, moist, medium dense. (Alluvium)	11	14.6				
		SC SM		11	11.5	1 1/4	LL=22, PL=17, Pf=5, P ₂₀₀ =39.4%		
				4	14.0				
3096.5	11.0		SANDY LEAN CLAY, low plasticity, some lenses of Clayey Sand, gray, moist to wet, soft. (Alluvium)	2/1	25.6				
		CL							
3092.0	15.5		END OF BORING	1/2	14.4				
			Water observed at a depth of 14.7 with 14.0' of hollow-stem auger in the ground.						
			Water not observed to dry cave-in depth of 10.2' immediately after withdrawal of auger.						
			Boring then backfilled.						

BORING BPF WL-MC QP ELEV ~ 4360.GPJ LAGNN06.GDT 1/15/24

APPENDIX C: PLAN SHEET

