



Project Manual

MetraPark South Expo Lot

Construction Project



AUGUST 2024

METRAPARK

MONTANA'S ENTERTAINMENT & TRADE CENTER

TABLE OF CONTENTS

INVITATION TO BID

INSTRUCTIONS TO BIDDERS

BID SUBMITTAL PACKAGE (TO BE EXECUTED AND SUBMITTED FOR BID BY CONTRACTOR)

- BID FORM
- BID BOND

AGREEMENT

PERFORMANCE BOND

PAYMENT BOND

STANDARD GENERAL CONDITIONS AND SUPPLEMENTARY CONDITIONS – BY REFERENCE

SPECIAL PROVISIONS

Section 00910 - Project Specific Special Provisions

CONTRACTORS INSURANCE GUIDE

DISADVANTAGED BUSINESS ENTERPRISE DOCUMENTS

CERTIFICATION REGARDING DEBARMENT

GEOTECHNICAL REPORT

CONSTRUCTION DRAWINGS

DIVISION 0 – BIDDING AND CONTRACT REQUIREMENTS
SECTION 00100 INVITATION TO BID

Separate sealed bids for construction of the South Expo Lot Construction Project will be received by Yellowstone County, Montana at Yellowstone County Commissioner's Office, 316 N 26th Room 3101, Billings, MT until 3 pm local time on August 30th and then publicly opened and read aloud on September 3rd at the Board of County Commissioners meeting.

The project consists of asphalt reconstruction to include milling of asphalt, grading, paving, concrete removal and placement, water main and service replacement, sanitary sewer main and service replacement, and storm drain improvement and replacement.

Five (5) copies of the bid (1 original, 4 copies) must be submitted.

Digital copies of the Bidding Documents including Drawings and the Project Manual are available at Billings Builder's Exchange.

There will be a Pre-Bid Conference at the office of WWC Engineering, 550 S 24th St W Suite 201, Billings, MT, on August 22nd at 10 am local time. Interested Contractors are highly encouraged to attend.

All questions shall be submitted by August 21st at 5 pm local time.

CONTRACTOR and any of the CONTRACTOR'S Subcontractors bidding or doing work on this project will be required to be registered with the Montana Department of Labor and Industry (DLI). Forms for registration are available from the Department of Labor and Industry, PO Box 8011, 1805 Prospect, Helena MT 59604-8011. Information on registration can be obtained by calling (406) 444-7734. All laborers and mechanics employed by Contractor or Subcontractors in performance of the construction work shall be paid wages at rates as required by The Contractor must ensure that employees and applicants for employment are not discriminated against because of their race, color, religion, sex, or national origin.

Each bid must be accompanied by a Certified Check, Cashier's Check, or Bid Bond payable to Yellowstone County, MT, in an amount not less than ten percent (10%) of the total amount of the bid. Successful Bidders shall furnish an approved Performance Bond and a Labor and Materials Payment Bond, each in the amount of one hundred percent (100%) of the contract amount. Insurance, as required, shall be provided by the successful Bidder(s) and a certificate(s) of that insurance shall be provided.

This project is funded in part or in whole with grant/loan funding from American Rescue Plan Act (ARPA) of 2021.

Award of the project will be contingent upon receiving funding and award concurrence from Yellowstone County Commissioners.

Bids may only be withdrawn as provided in Article 15 of the Instructions to Bidders.

The Montana 1% Gross Receipts Tax applies to this project.

The right is reserved to reject any or all proposals received, to waive informalities, to postpone the award of the contract for a period not to exceed sixty (60) days, and to accept the lowest responsive and responsible bid that is in the best interest of the Owner.

Yellowstone County, Montana is an Equal Opportunity Employer.

Published at Yellowstone County News, Montana, this 16th day of August, 2024.

Published at Yellowstone County News, Montana, this 23rd day of August, 2024.

Published at Yellowstone County News, Montana, this 30th day of August, 2024.

(Title)

(Address)


END OF SECTION 00100

INSTRUCTIONS TO BIDDERS FOR CONSTRUCTION CONTRACT

TABLE OF CONTENTS

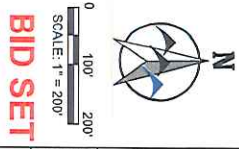
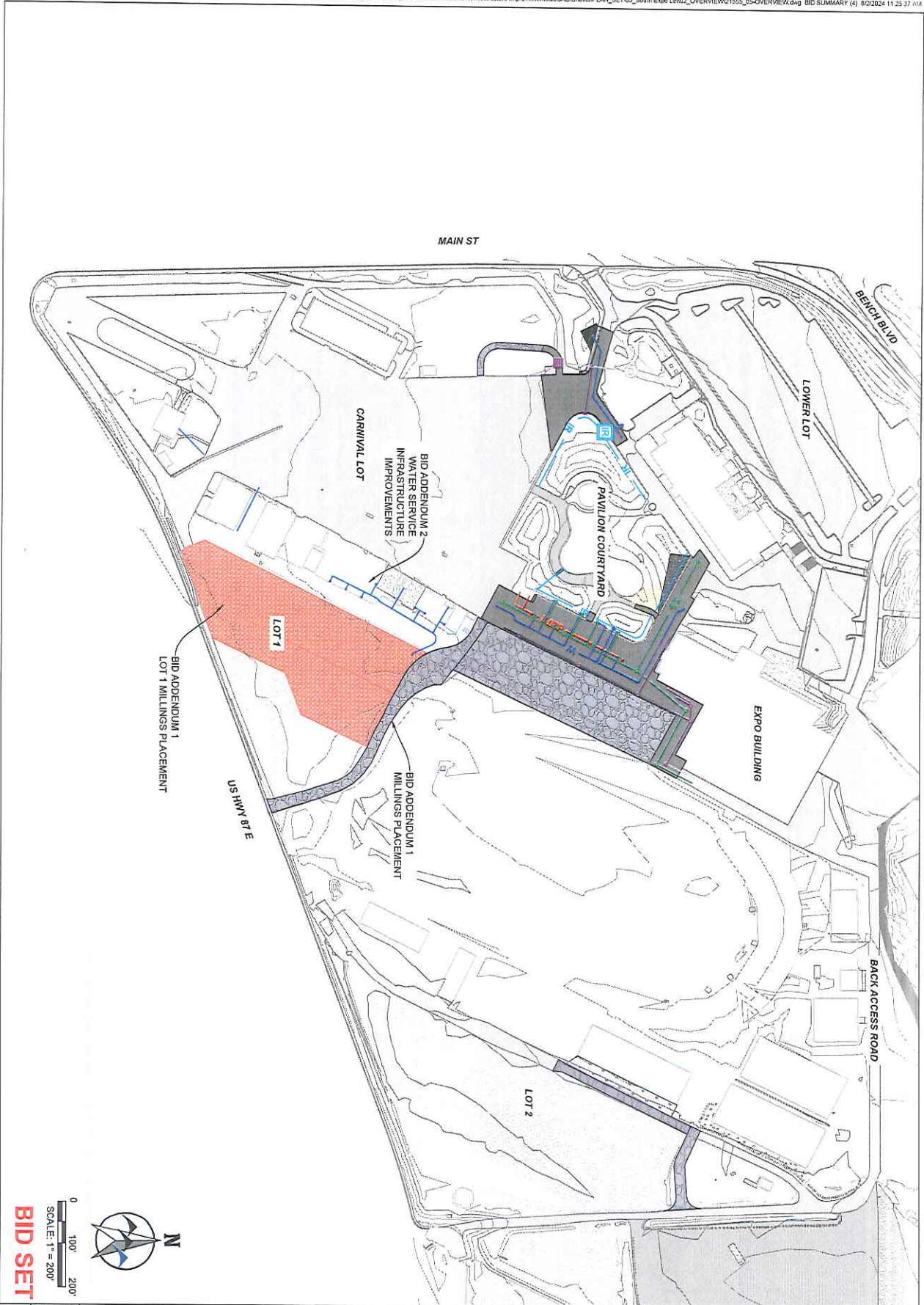
	Page
ARTICLE 1—DEFINED TERMS.....	2
ARTICLE 2—BIDDING DOCUMENTS	2
ARTICLE 3—QUALIFICATIONS OF BIDDERS	3
ARTICLE 4—PRE-BID CONFERENCE	4
ARTICLE 5—SITE AND OTHER AREAS; EXISTING SITE CONDITIONS; EXAMINATION OF SITE; OWNER’S SAFETY PROGRAM; OTHER WORK AT THE SITE	4
ARTICLE 6—BIDDER’S REPRESENTATIONS AND CERTIFICATIONS.....	6
ARTICLE 7—INTERPRETATIONS AND ADDENDA	6
ARTICLE 8—BID SECURITY	7
ARTICLE 9—CONTRACT TIMES	7
ARTICLE 10—SUBSTITUTE AND “OR EQUAL” ITEMS.....	7
ARTICLE 11—SUBCONTRACTORS, SUPPLIERS, AND OTHERS.....	8
ARTICLE 12—PREPARATION OF BID.....	8
ARTICLE 13—BASIS OF BID.....	9
ARTICLE 14—SUBMITTAL OF BID	10
ARTICLE 15—MODIFICATION AND WITHDRAWAL OF BID.....	11
ARTICLE 16—OPENING OF BIDS.....	11
ARTICLE 17—BIDS TO REMAIN SUBJECT TO ACCEPTANCE	11
ARTICLE 18—EVALUATION OF BIDS AND AWARD OF CONTRACT	11
ARTICLE 19—BONDS, INSURANCE, AND TAX.....	12
ARTICLE 20—SIGNING OF AGREEMENT	12
ARTICLE 21—STATE LAWS AND REGULATIONS	13
END OF SECTION	13



EXPO SOUTH LOT CONSTRUCTION PROJECT CONSTRUCTION ZONES YELLOWSTONE COUNTY, MT	PREPARED FOR YELLOWSTONE COUNTY METRAPARK ARENA 308 6TH AVE N.E. BILLINGS, MT 59101	DESIGNED BY: <u> </u> DRAWN BY: <u> </u> CHECKED BY: <u> </u> DATE: <u> </u>
	PREPARED BY  WWC ENGINEERING 550 S. 24TH ST. W., SUITE 201 BILLINGS, MT 59102 (406) 694-2210 www.wwcengineering.com	SHEET <div style="text-align: center; font-size: 2em; font-weight: bold;">1</div>

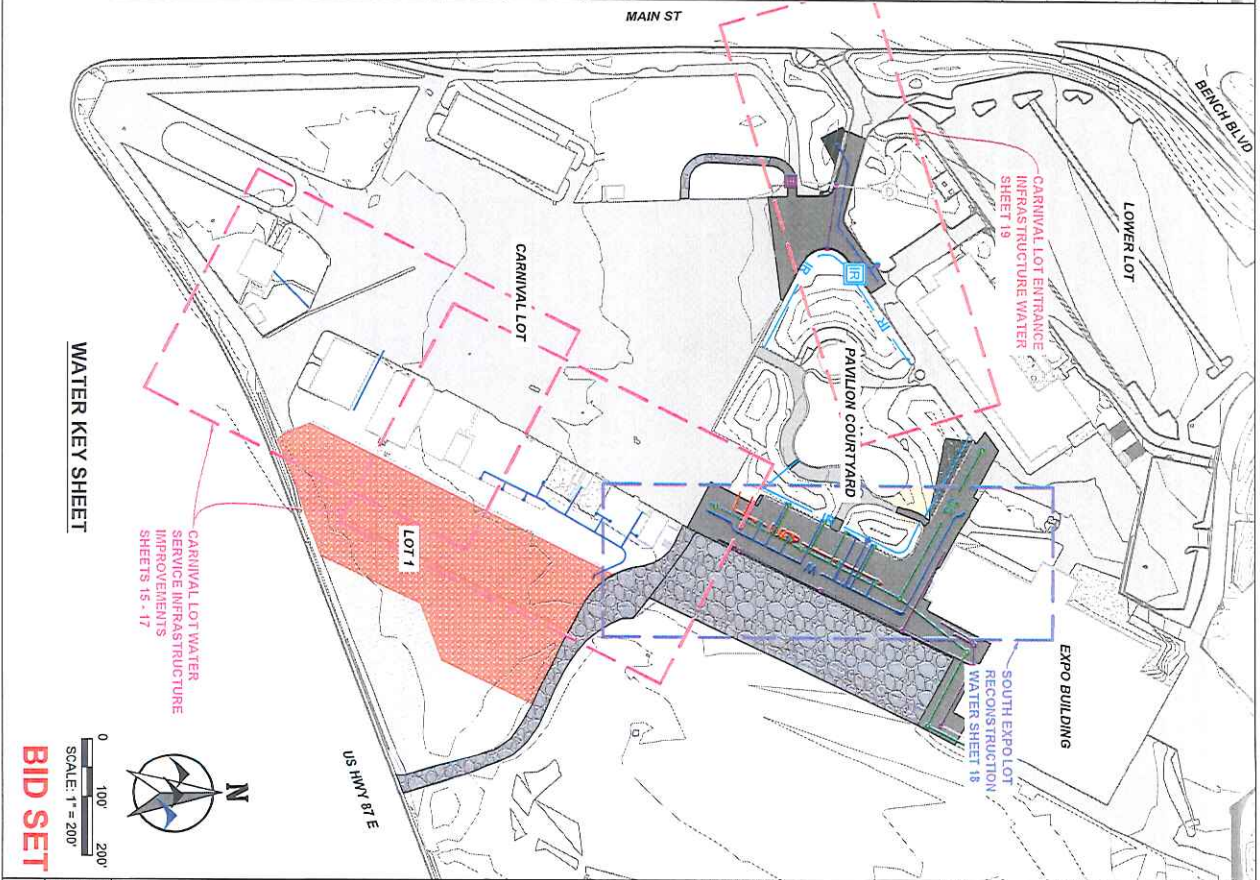
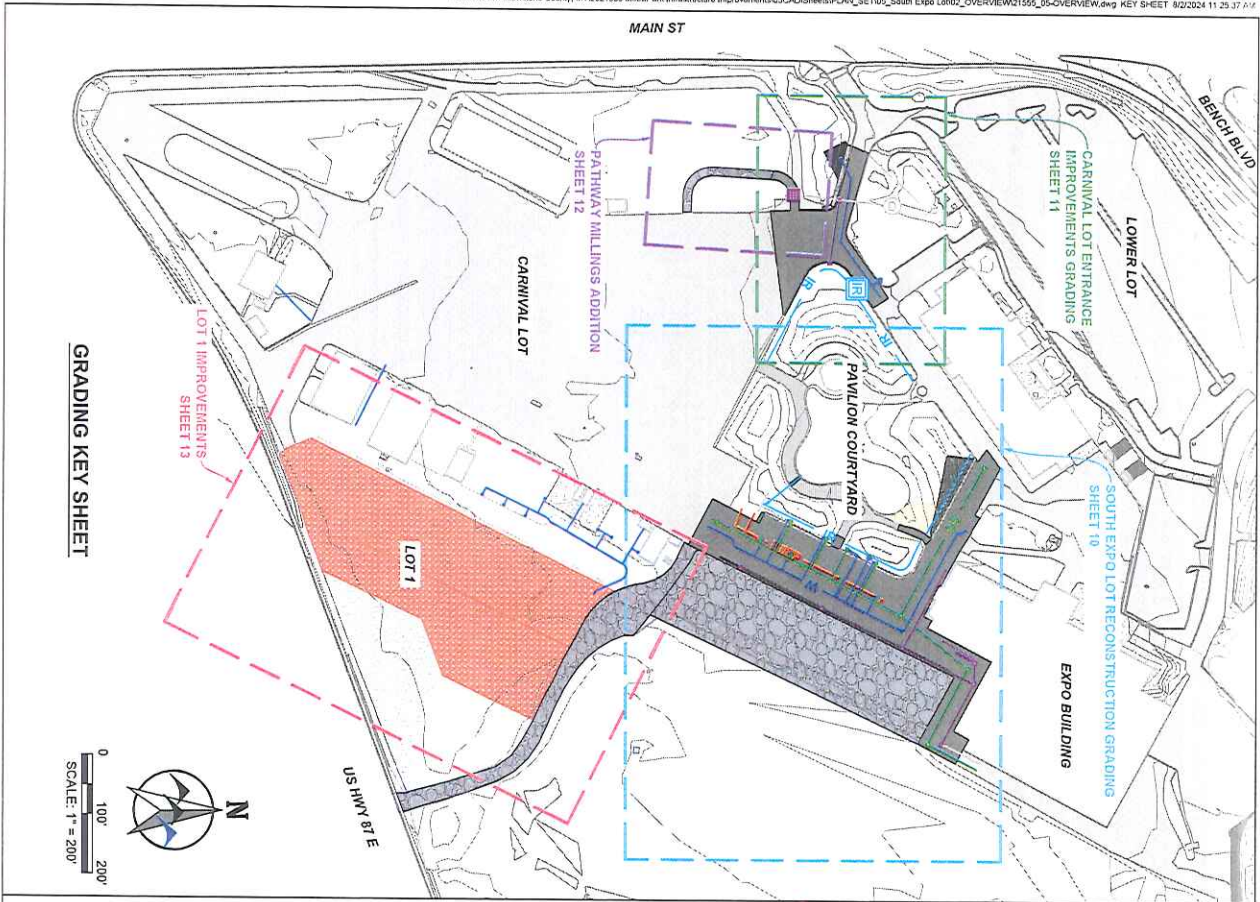


EXPO SOUTH LOT CONSTRUCTION PROJECT CONSTRUCTION ZONES YELLOWSTONE COUNTY, MT	PREPARED FOR YELLOWSTONE COUNTY	METRAPARK ARENA 308 6TH AVE N. BILLINGS, MT 59101	DESIGNED BY: <u> </u> DRAWN BY: <u> </u> CHECKED BY: <u> </u> DATE: <u> </u>
	PREPARED BY  WWC ENGINEERING	650 S. 24TH ST. W., SUITE 201 BILLINGS, MT 59102 (406) 894-2210 www.wwcengineering.com	SHEET 1



BID SET

<p>4</p>	<p>YELLOWSTONE COUNTY SOUTH EXPO LOT CONSTRUCTION PROJECT BID ADDENDUM PROJECT SUMMARY SHEET BILLINGS, MT</p>	<p>PREPARED BY WWC ENGINEERING 550 S. 24TH ST. W., SUITE 201 BILLINGS, MT 59102 (406) 894-2210 www.wwcengineering.com</p>	NO.	REVISION	BY	DATE
			PROJECT NO. 2021-555			



BID SET

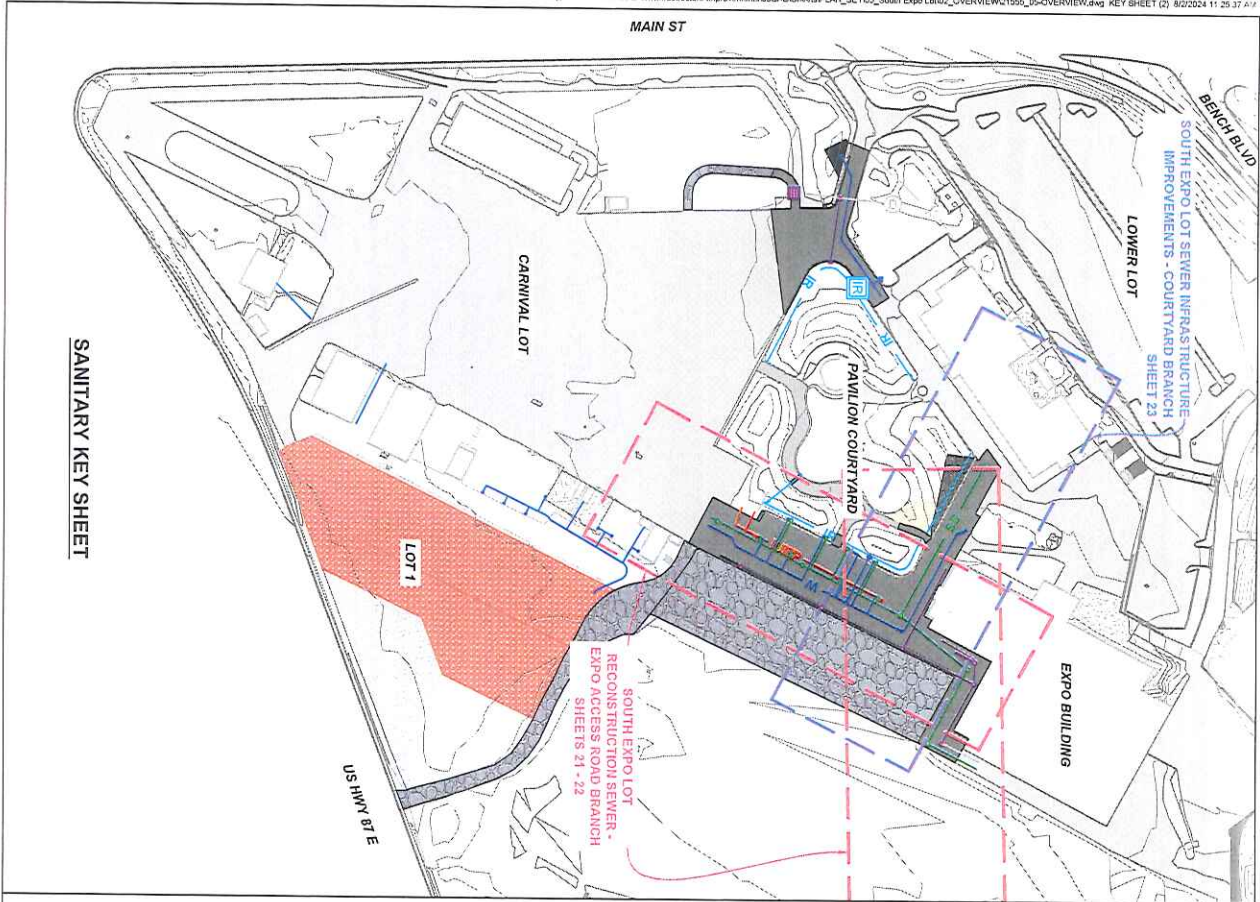
SHEET 5

YELLOWSTONE COUNTY
 SOUTH EXPO LOT CONSTRUCTION PROJECT
PROJECT OVERVIEW KEY SHEET
 BILLINGS, MT

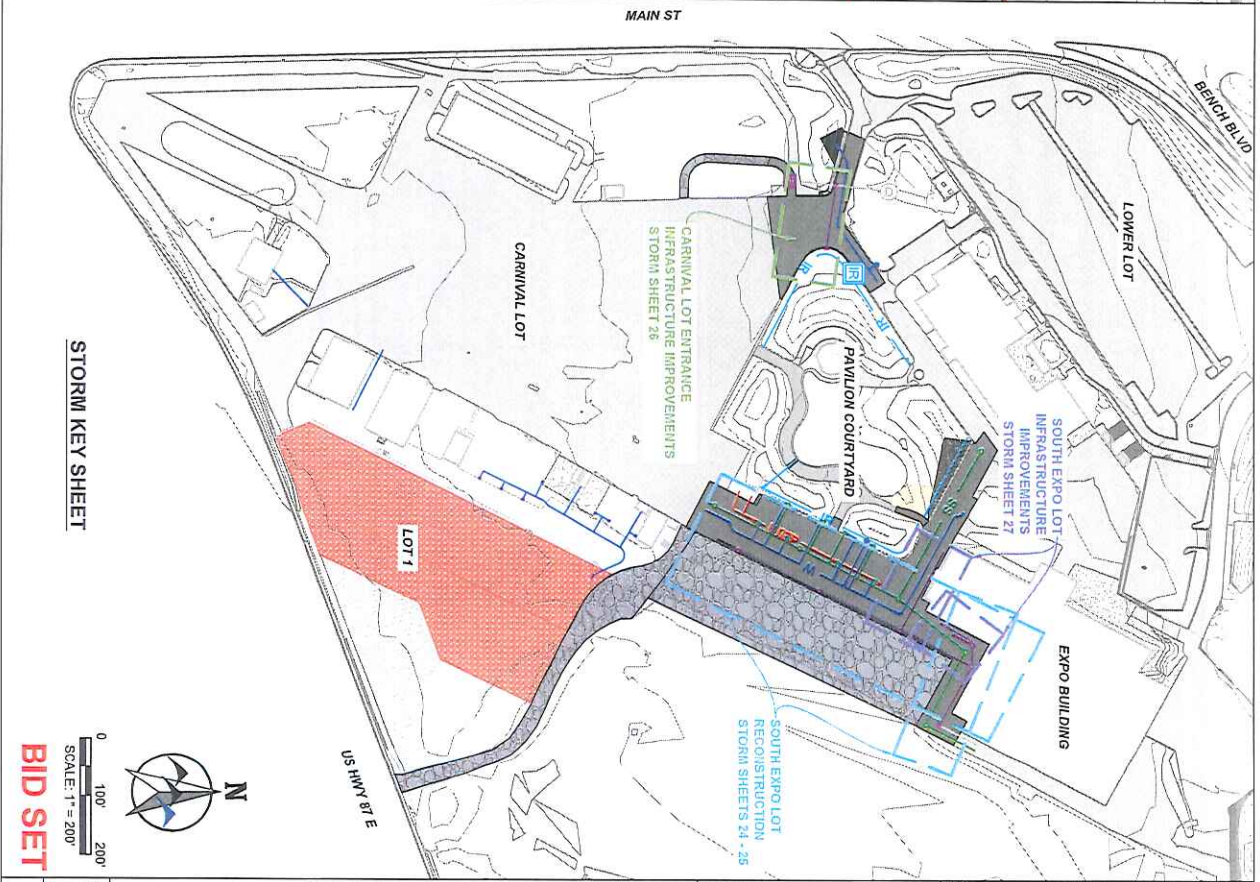
PREPARED BY
WWC ENGINEERING
 550 S. 24TH ST., W. SUITE 201
 BILLINGS, MT 59102
 (406) 894-2210
 www.wwcengineering.com

NO.	REVISION	BY	DATE

PROJECT NO. 2021-555



SANITARY KEY SHEET



STORM KEY SHEET

0 100' 200'
SCALE: 1" = 200'

BID SET

DESIGNED BY: JMD
DRAWN BY: ZSL
CHECKED BY: GJR
DATE: 8/20/24
SHEET
6

YELLOWSTONE COUNTY
SOUTH EXPO LOT CONSTRUCTION PROJECT
PROJECT OVERVIEW KEY SHEET
BILLINGS, MT

PREPARED BY
WWC ENGINEERING
550 S. 24TH ST. W, SUITE 201
BILLINGS, MT 59102
(406) 894-2210
www.wwcengineering.com

NO.	REVISION	BY	DATE

PROJECT NO. 2021-555

ITEM	UNIT	QUANTITY		REMARKS
		FILL	CUT	
CARNIVAL LOT ENTRANCE	CY	600		CUT/FILL TO ASPHALT SUBGRADE EXCLUDES CONCRETE CUT/FILL
SOUTH EXPO LOT - ASPHALT PAVEMENT	CY	84	2,300	CUT/FILL TO ASPHALT SUBGRADE EXCLUDES CONCRETE CUT/FILL
SOUTH EXPO LOT - ASPHALT MILLINGS	CY	1,655	289	CUT/FILL TO SUBGRADE
TOTAL	CY	1,739	3,469	

SURFPACING				
ITEM	UNIT	QUANTITY	REMARKS	
4" ASPHALT PAVEMENT - 10" CRUSHED BASE	SY	2,293	SOUTH EXPO LOT	
4" ASPHALT PAVEMENT - 10" CRUSHED BASE	SY	2,293	CARNIVAL LOT ENTRANCE	
4" ASPHALT MILLINGS	SY	304	PATHWAY MILLINGS ADJUNCTION	
4" ASPHALT MILLINGS	SY	7,048	SOUTH EXPO LOT	
6" THICKNESS CRUSHED BASE	SY	567	OPENEAR BARN ROAD	
6" THICKNESS CRUSHED BASE	SY	7,988	SOUTH EXPO LOT	
6" THICKNESS CRUSHED BASE	SY	738	OPENEAR BARN ROAD	
6" THICKNESS CRUSHED BASE	SY	12,399	LOT 1	
4" ASPHALT MILLINGS	SY	2,339	BD ADDENDUM 1 - LOT 1	
4" ASPHALT MILLINGS	SY	12,399	BD ADDENDUM 1 - GATE 2 ACCESS ROAD	

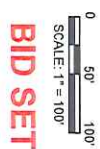
ID	LOCATION	PLAN QUANTITY		REMARKS
		CONCRETE CURB & GUTTER (LF)	CONCRETE FLATWORK (SF)	
NS-01	SOUTH EXPO LOT	154		REBORN
NS-02	SOUTH EXPO LOT	185		REBORN
NS-03	SOUTH EXPO LOT	123		REBORN
NS-04	SOUTH EXPO LOT		657	NEW GUTTER
NS-05	CARNIVAL LOT ENTRANCE		715	SEWALK
NS-06	CARNIVAL LOT ENTRANCE		101	ADA RAMP
NS-07	CARNIVAL LOT ENTRANCE	165		CURB
NS-08	CARNIVAL LOT ENTRANCE	194		CURB
NS-09	ARENA BACK LOT	20		CURB
BD ADD 2	CARNIVAL LOT WATER		129	SEWALK
BD ADD 2	CARNIVAL LOT WATER		18	SEWALK
BD ADD 2	CARNIVAL LOT WATER		30	SEWALK

TOTAL	CONCRETE CURB AND GUTTER (LF)		CONCRETE FLATWORK (SF)		CONCRETE ADA RAMP (SF)	
	379	462	715	101	657	175

NOTES:
 1. DESCRIBE IN THE REMARKS COLUMN CORRESPONDS TO THE LEGEND LABELS ON IMPROVEMENT SHEETS.
 2. INSTALL ID NUMBERS IN NOTES CONCRETE REMOVAL SUMMARY TABLE AS APPLICABLE.

CONCRETE REMOVAL						
ID	LOCATION	PLAN DIMENSIONS	UNIT	QUANTITY	REMARKS	
REMO1	SOUTH EXPO LOT	114	SF	5.7	CONCRETE PAD	
REMO2	CARNIVAL LOT ENTRANCE	716	SF	79.6	SEWALK	
REMO3	CARNIVAL LOT ENTRANCE	578	SF	64.0	VALLEY GUTTER	
REMO4	CARNIVAL LOT ENTRANCE	20	SF	4.4	CURB	
TOTAL			SF	179		

NOTES:
 1. CURB & GUTTER REMOVAL IS REBORN AS A STANDARD 2' WIDTH FOR SV CALCULATIONS.
 2. DESCRIBE IN THE REMARKS COLUMN CORRESPONDS TO THE LEGEND LABELS ON IMPROVEMENT SHEETS.
 3. ADDITIONAL 10% ADDED TO BID FORM QUANTITY FOR UNDEVELOPED CONCRETE REMOVAL.



BID SET

DESIGNED BY: JMD
 DRAWN BY: ZSR
 CHECKED BY: GFR
 DATE: 6/6/2024
 SHEET 7

YELLOWSTONE COUNTY
 SOUTH EXPO LOT CONSTRUCTION PROJECT
SUMMARY TABLES
 BILLINGS, MT

PREPARED BY

 550 S. 24TH ST. W. SUITE 201
 BILLINGS, MT 59102
 (406) 694-2210
 www.wwcengineering.com

NO.	REVISION	BY	DATE

PROJECT NO. 2021-555